

MAGGIE'S RAGS™

Baby Olivia's Cardigan

Copyright © 1998, 2023 Leigh Witchel

All rights reserved. This pattern may not be distributed in any form, digital or hard copy, without the express permission of the author.



This clever but easy baby sweater knits up fast in worsted weight cotton. Traveling stitches decorate the yoke, while an openwork stitch keeps the body interesting.

Sweater is knit in one piece from top down, with the front garter stitch border knit at the same time. Sleeve seams are sewn before the body is completed, and finishing is minimal.

A smooth round cabled yarn shows off the stitch texture best. Yarns used for the garments pictured are Reynolds's Saucy (peach), Kathleen Hughes Hand Dyed Jewel Collection (green), and Classic Elite Provence (pink).

Yarn Specifications: Worsted weight cotton, approximately 100 yds/50 gr. About 16 wraps per inch

	Newborn (NB)	6-month (6M)	12-month (12M)	18-month (18M)
Garment chest	20½" (51.3 cm)	21¾" (54.4 cm)	23" (57.5 cm)	24¼" (60.6 cm)
Yarn required	4.75 oz (135 gr) 270 yds (250 m)	5.4 oz (155 gr) 310 yds (285 m)	6.25 oz (175 gr) 355 yds (325 m)	7.5 oz (220 gr) 430 yds (390 m)
Buttons (1/2")	5	5	5	6

Gauge: 24 sts = 5" and 24 rows = 3" in spider stitch

Needles: #5 needles or size needed to achieve gauge. You will need one circular needle (at least 24" long) plus a pair of straight needles or an additional circular needle for knitting the sleeves. Cable needle.



Row 20: Sl1, K3, *K4, P3*. Repeat btw * until 8 sts remain, ending K8.

Note that for sizes 6M and 12M, there is a buttonhole on row 21--see instructions at beginning of yoke section.

Row 21: Same as row 19.

Row 22: Same as row 20.

Row 23: Same as row 19.

Row 24: Sl1, K3, *K2, M1, K2, P3*. Repeat btw * until 8 sts remain, ending K2, M1, K6. There are now 149 (157, 165, 173) sts.

Row 25: Sl1, K3, P5, *K1, P1, K1, P5*. Repeat btw * until 4 sts remain, ending K4.

Row 26: Sl1, K3, *K5, P3*. Repeat btw * until 9 sts remain, ending K9.

Row 27: Sl1, K3, *P5, P3tog*. Repeat btw * until 9 sts remain, ending P5, K4. There are now 115 (121, 127, 133) sts.

Row 28: Sl1, K3, M1, K until 4 sts remain, M1, K4. There are now 117 (123, 129, 135) sts.

BODY

Maintaining 4 sts at each front edge in garter st as in yoke, and continuing to work buttonholes at the proper place, begin working in Spider Stitch. Work 1 (3, 5, 7) rows in Spider Stitch.

SLEEVES

Right Sleeve: On next row (WS), Sl1, K3 for border, purl 19 (20, 21, 22) sts for left. front. Using a new needle, purl 18 (19, 20, 21) sts for sleeve. Turn and cast on 6 (7, 7, 8) sts at beg of needle for underarm. Work back on right side in pattern as established. (See chart at right for starting point. Note that pattern is not centered on sleeve in all sizes.) Turn and cast on 7 (7, 8, 8) sts at beg of row for other side of underarm. You will now work back and forth on these 31 (33, 35, 37) sts for the right sleeve. Work even in pattern until sleeve measures 3½" (4½", 5½", 6½"), ending with a RS row. (Note that the sleeve will look best if you can end with row 11 or row 3 of pattern.) Knit 8 rows. Bind off in knitting on WS. Break off yarn leaving long tail for sewing up.

Left Sleeve: Working on WS, join yarn to back at the edge of the just-completed right sleeve. Purl 35 (37, 39, 41) sts for back. Using a new needle, purl 18 (19, 20, 21) sts for left sleeve. Turn and cast on 7 (7, 8, 8) sts at beg of needle for underarm. Work back on right side in pattern as established. (Note that pattern is not centered on sleeve in all sizes. The left sleeve will be a mirror image of the right sleeve. Beg the pattern st at the point where it ended on the right sleeve.) Turn and cast on 6 (7, 7, 8) sts at beg of row for other side of underarm. Continue as for right sleeve.

Key

<input type="checkbox"/>	Knit on right side, purl on wrong side
<input type="checkbox"/>	Yarn over
<input type="checkbox"/>	Knit 2 together
<input type="checkbox"/>	SSK - Slip 1 knitwise, slip another knitwise, knit two together
<input type="checkbox"/>	Slip one, K2tog, Pass Slipped Stitch Over

Spider Stitch Pattern

(multiple of 6 stitches plus 1)

Row 1: K1, *YO, SSK, K1, K2tog, YO, K1*. Repeat between * across.

Row 2 and all even (WS) rows: Purl.

Row 3: *K2, YO, Sl1, K2tog, PSSO, YO, K1*. Repeat between * across, ending K1.

Row 5: *K1, K2tog, YO, K1, YO, SSK*. Repeat between * across, ending K1.

Row 7: Same as row 5.

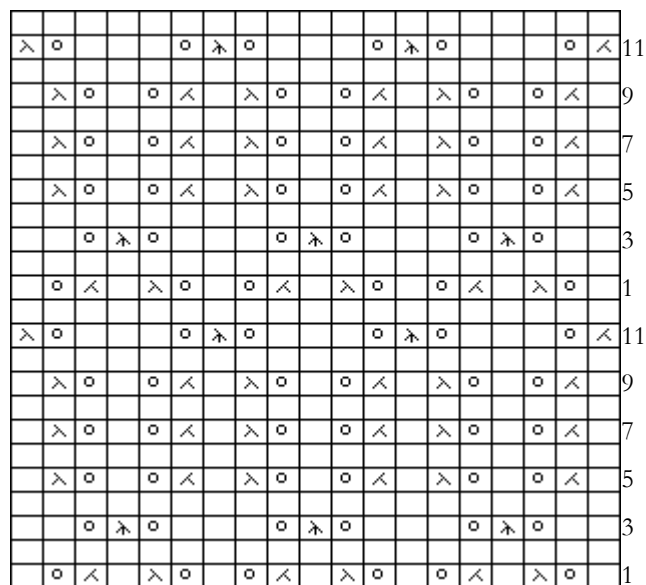
Row 9: Same as row 5.

Row 11: K2tog, *YO, K3, YO, Sl1, K2tog, PSSO*. Repeat between * across, ending YO, K3, YO, SSK.

Row 12: Purl.

Repeat these 12 rows for pattern

Chart



Start here for 18M right sleeve

Start here for 6M right sleeve

Start here for 18M left sleeve

Start here for 6M left, 12M right & left sleeves

Start here for body (all sizes) & Newborn right & left sleeve

BODY

With WS facing, join yarn to left front at edge of sleeve. Purl 19 (20, 21, 22), K4. Sew sleeve seams. Work across on RS in pattern, picking up 12 (13, 14, 15) sts at each underarm. There are now 105 (111, 117, 123) sts. Continue working in Spider Stitch as established, maintaining 4 sts at each front as a border, and working buttonholes, until 3 (3, 3, 4) repeats of pattern have been completed. For sizes NB and 18M, end with row 12 of pattern. For sizes 6M and 12M, work 4 more rows, ending with row 4 of pattern.

BOTTOM BAND

While working bottom band, continue to work buttonholes as established.

Set up Row (RS): Sl1, K3, P6 (3, 3, 6), *[K1, P1, K1] in next st, P5*. Repeat btw * until 11(8, 11) sts remain, ending [K1,P1,K1] in next st, P6(3, 3, 6), K4.

Row 1 (WS): Sl1, K9 (6, 6, 9), *P3, K5*. Repeat btw * until 5 (2, 2, 5) sts remain, ending K5(2, 2, 5).

Row 2 (RS): Sl1, K3, P6 (3, 3, 6), *K1, P1, K1, P5*. Repeat btw * until 13 (10, 10, 13) sts remain, ending K1, P1, K1, P6(3, 3, 6), K4.

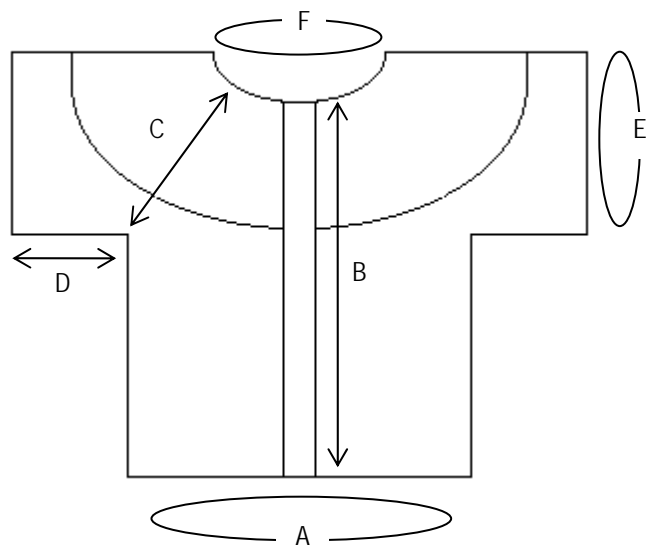
Repeat these two rows 4 (4, 6, 4) times. Work row 1 once more.

On next row: Sl1, K3, P6(3, 3, 6), *P3tog, P5*. Repeat btw * until 13 (10, 10, 13) sts remain, ending P3tog, P6 (3, 3, 6), K4.

Bind off on WS in knitting. Sew on buttons, weave in ends.

Many thanks to Jocelyn Blair for testing this pattern and making excellent suggestions to improve it.

Measurements				
	NB	6M	12M	18M
A. Chest	20.5" (51.3 cm)	21.75" (54.4 cm)	23" (57.5 cm)	24.25" (60.6 cm)
B. Length	9" (22.5 cm)	9.75" (24.4 cm)	10.25" (25.6 cm)	11" (27.5 cm)
C. Neck to underarm	5" (12.5 cm)	5.25" (13.1 cm)	5.5" (13.8 cm)	6" (15 cm)
D. Sleeve length to underarm	4.5" (11.3 cm)	5.5" (13.8 cm)	6.5" (16.3 cm)	7.5" (18.8 cm)
E. Sleeve circumference	6.25" (15.6 cm)	6.63" (16.6 cm)	7" (17.5 cm)	7.5" (17.5 cm)
F. Neck circumference	10" (25 cm)	10.63" (25.6 cm)	11.25" (28.1 cm)	11.88" (29.7 cm)



Abbreviations

beg	Begin/beginning	PSSO	Pass slipped stitch over
btw	Between	P3tog	Purl 3 together
C3B	Cross 3 Back - Sl 2 sts to cable needle, hold in back of work, k next st, then p1, k1 from cable needle	Right Twist	slip p st on to cable needle, hold behind work, k next st, p st from cable needle
C3F	Cross 3 Front - Sl 2 sts to cable needle, hold in front of work, p next st, then k1,p1 from cable needle	Sl	Slip
K	Knit	RS	Right side
K2tog	Knit 2 together	SSK	Slip Slip Knit - Slip first st as if to knit, slip second st as if to knit, insert left needle into the front of both sts and knit together
Left Twist	Sl k st onto a cable needle, hold in front of work, p next st, k st from cable needle	St/sts	Stitch/stitches
M1	Insert the left needle (from front to back) under the running thread between two stitches and knit into the back of the loop, twisting it	WS	Wrong side
P	Purl	YO	Yarn over