

MAGGIE'S RAGS™

Seashore Hat

Copyright © 1999, 2023 Margaret Radcliffe

All rights reserved. This pattern may not be distributed in any form, digital or hard copy, without the express permission of the author.



Sand castles, buckets, waves, and suns circle this easy to knit stocking hat. Only two colors of worsted weight yarn are used, one solid and one variegated. Knit the matching Seashore Sweater from MAGGIE'S RAGS™ pattern S-01698.

Hat and sweater shown were knit in Lorna's Laces Shepherd Worsted, colors Aslan and Denim.

GAUGE: 15 sts and 17 rows = 3"

NEEDLES:

- #7 US (4.5mm) double pointed needles, or size needed to achieve proper gauge.
- Double pointed needles 2 sizes smaller

MATERIALS					
Worsted weight yarn, approx. 225 yards/4 oz; 13 wraps per inch					
	XS	S	M	L	XL
Hat circumference	14½" (37 cm)	16¾" (43 cm)	19¼" (49 cm)	21⅛" (55 cm)	24 (61 cm)
Length	11⅝" (30 cm)	13" (33 cm)	15⅜" (40 cm)	17⅝" (45 cm)	18¾ (48 cm)
Main Color	97 yds 1.7 oz (49 gr)	120 yd 2.1 oz (61 gr)	163 yds 2.9 oz (83 gr)	199 yds 3.5 oz (101 gr)	228 yds 4 oz (116 gr)
Contrast Color	43 yds .8 oz (22 gr)	50 yds .9 oz (25 gr)	67 yds 1.2 oz (34 gr)	75 yds 1.3 oz (38 gr)	83 yds 1.5 oz (42 gr)

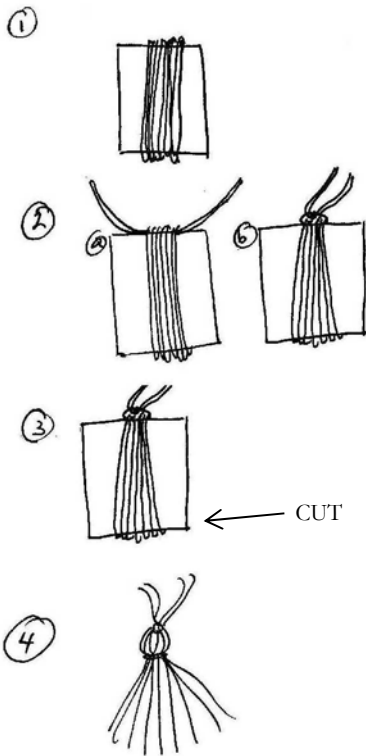
Instructions	Extra Small	Small	Medium	Large	Extra Large
Using main color and smaller needles, cast on ____ stitches. Divide stitches between three (or four) needles, and join ends begin careful not to twist knitting. Note: A 16" circular needle may be used for the patterned portion of the hat if desired, but you will need to switch to double pointed needles as decreases are worked at the top of the hat.	64 sts	76 sts	86 sts	96 sts	108 sts
Work circularly in Sand Stitch from Chart I for ____ rounds.	5 rnds	7 rnds	11 rnds	15 rnds	15 rnds
Change to larger needles. Knit next round, increasing ____ sts evenly spaced around hat.	8 sts	8 sts	10 sts	12 sts	12 sts
Total stitches:	72 sts	84 sts	96 sts	108 sts	120 sts
Continuing to work circularly, work Chart II, beginning with round ____ of chart.	rnd 7	rnd 7	rnd 1	rnd 1	rnd 1
Using main color, knit around decreasing 12 sts evenly spaced.	60 sts	72 sts	84 sts	96 sts	108 sts
Work rows 1-6 of chart once more.					
*Using contrast color, knit around decreasing 12 sts evenly spaced. Using main color, knit 5 rounds. Repeat from * until 24 sts remain. Using contrast color, work one more decrease round. Break off yarn and pull through remaining 12 sts.					
<p>Tassel</p> <ol style="list-style-type: none"> 1. Cut a stiff piece of cardboard into a rectangle about 5½" x 3" (14cm x 7.5 cm), or use any stiff flat object about this size. Using main color, wrap the yarn lengthwise around the cardboard about 50 times. Cut yarn even with edge of cardboard. 2. Cut a 24" (61 cm) long piece of yarn. Fold this piece of yarn in half and pull through between the cardboard and the wrapped yarn. Slide up to one end of the cardboard. With half of the yarn extending on either side, tie the two ends tightly and securely around the wrapped yarn. 3. With a pair of sharp scissors, cut through the wrapped yarn at the opposite end of the cardboard. 4. Cut a 12" length of yarn. Wrap this tightly around the tassel 2 or 3 times, about ¾" (2 cm) from the top. Tie securely. Using a yarn needle, pull the ends of this tie through to the inside of the tassel so that the ends hang down inside. 5. Shake out the tassel and trim off any uneven ends. 					
<p>Finishing</p> <p>Attach the tassel to the hat using the attached tie. Weave in ends on inside of hat.</p>					

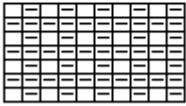
Chart I

Sand Stitch

(multiple of 2 sts)

Round 1: *P1, K1*. Repeat between*
around

Round 2: Purl



☐ Purl ☐ Knit

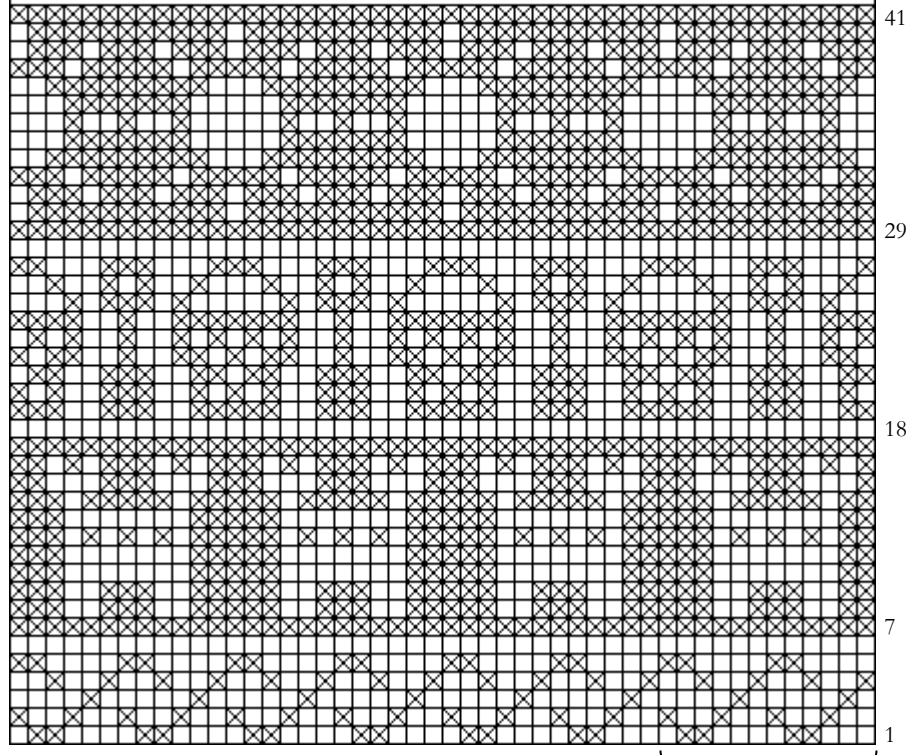
Abbreviations

K	Knit
P	Purl
Rnd	Round(s)
St/sts	Stitch/stitches

Chart II

☐ Main color

☒ Contrast color



12 st repeat

Choosing Colors

You can choose whatever colors you like for this sweater, but to make sure the patterns show up when you're done, follow these rules:

- **Choose one variegated and one solid color**
Make sure the colors look good together.
Make sure that none of the colors in the variegated yarn are the same as the solid yarn.
- **Choose two solid colors**
Make sure they look good together.
Make sure there is a lot of contrast between them so that the patterns show up.
- **Choose several colors**
Pick one color for background, and change to a different color for each pattern.
Make sure the colors look good together.
Make sure there is a lot of contrast between each pattern color and the background color, so that the patterns show up.