

MAGGIE'S RAGS™

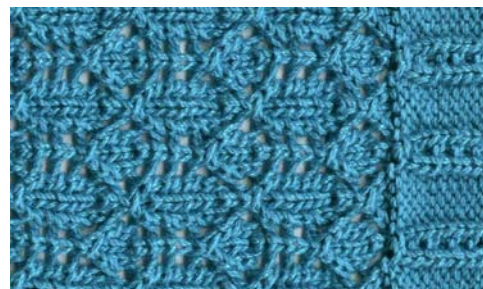
Baby Olivia Blanket

Copyright © 1999, 2023 Margaret Radcliffe

All rights reserved. This pattern may not be distributed in any form, digital or hard copy, without the express permission of the author.



Lovely openwork with embossed bands at top and bottom and garter stitch borders at sides. Knits up quickly in worsted weight cotton. Make the matching, circular-yoked Baby Olivia's Cardigan from MAGGIE'S RAGS™ pattern S-00998.



A smooth round cabled yarn shows off the stitch texture best. Reynolds Saucy was used for the 36" (90 cm) blanket pictured.

Materials needed	Grams	Ounces	Yards
36" (90cm) square blanket	700 grams	24.5 oz	1295 yards
48" (120cm) square blanket	1250 grams	43.75 oz	2313 yards

Key to Charts

- Knit on right side, purl on wrong side
- Yarn over
- Knit 2 together
- SSK - Slip 1 knitwise, slip another knitwise, knit these two stitches together
- Slip one, K2tog, pass slipped stitch over
- Slip 1 knitwise
- Purl on right side, knit on wrong side
- Knit 1, purl 1, knit 1 into next stitch
- Purl 3 together
- No stitch

Gauge: 24 sts and 40 rows = 5" (12.5 cm) in Spider Stitch

Yarn specifications: Worsted weight cotton, approximately 100 yds/50 gr. About 16 wraps per inch

Needles: US #5 needles (3.75mm) or size needed to achieve correct gauge. You will find it most comfortable to use a circular needle, at least 24" long.

Other tools and supplies: Yarn needle

Abbreviations

K - Knit	Sl - Slip
K2tog - Knit 2 together	SSK - Slip 1 knitwise, slip another knitwise, knit these two stitches together
P - Purl	St/Sts - Stitch/stitches
P3tog - Purl 3 together	WS - Wrong side
RS - Right side	YO - Yarn over

Instructions	36" (90 cm) square	48" (120 cm) square
Cast on ____ sts.	177 sts	231 sts
Work Embossed Band (see box below). Note that number of stitches will increase to ____ sts while band is worked, then will decrease to original number on the last row of the band.	233 sts	305 sts
Purl one row (WS).		
For the body of the blanket, work in Spider Stitch, continuing to maintain the first and last 4 sts as garter stitch edging (Sl1, K3 at the beginning of each row, and K4 at the end of each row). Work even until blanket measures ____" from cast on edge, ending with row 8 of Spider Stitch pattern.	34½" (86 cm)	46½" (116cm)
Work Embossed Band. Cast off on WS in knitting. Weave in ends. Block to size.		

Embossed Band

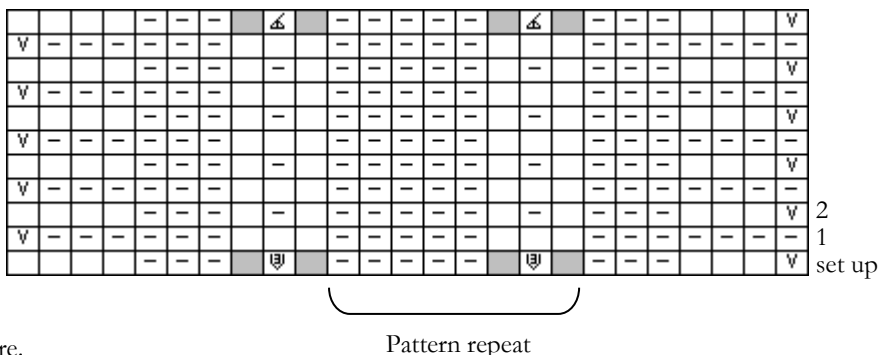
Set up Row (RS): Sl1, K3, P3, *[K1, P1, K1] in next st, P5*. Repeat between * until 8 sts remain, ending [K1,P1,K1] in next st, P3, K4.

Row 1 (WS): Sl1, K6, *P3, K5*. Repeat between * until 2 sts remain, end K2.

Row 2 (RS): Sl1, K3, P3, *K1, P1, K1, P5*. Repeat between * until 10 sts remain, end K1, P1, K1, P3, K4.

Repeat these two rows 4 times. Work row 1 once more.

On next row (RS): Sl1, K3, P3, *P3tog, P5*. Repeat btw * until 10 sts remain, ending P3tog, P3, K4.



Spider Stitch

(multiple of 6 stitches plus 1)

Row 1: *K1, K2tog, YO, K1, YO, SSK*. Repeat between * across, ending K1.

Row 2 and all even (WS) rows: Purl.

Row 3: K2tog, *YO, K3, YO, Sl1, K2tog, PSSO*. Repeat between * across, ending YO, K3, YO, SSK.

Row 5: K1, *YO, SSK, K1, K2tog, YO, K1*. Repeat between * across.

Row 7: *K2, YO, Sl1, K2tog, PSSO, YO, K1*. Repeat between * across, ending K1.

Row 9: Same as row 1.

Row 11: Same as row 1.

Row 12: Purl.

Repeat these 12 rows for pattern.

