

MAGGIE'S RAGS™

Trumpet Vine Baby Set

Copyright © 1998, 2000, 2023 Margaret Radcliffe

All rights reserved. This pattern may not be distributed in any form, digital or hard copy, without the express permission of the author.

As easy to knit as it is to wear, this cross-front baby sweater is knit in one piece with simple lace borders attached.



Sample was knit in Superwash Merino from Cherry Tree Hill Yarn

Yarn specifications: Sport weight wool or wool blend yarn, 140 yds/
1.75 oz (130 m/50 gr); 16 wraps per inch.

Needles: #7 needles for sweater; #7 and #5 dp needles for hat.

Gauge: 11 sts and 14 rows = 2"

	Newborn	6 Month	12 Month
Chest	16.5" (41 cm)	17.5" (44 cm)	18.75" (47 cm)
Finished garment	20.25" (51 cm)	21.25" (53 cm)	22.5" (56 cm)
Yarn required - Sweater	5.0 oz - 400 yds (145 gr - 375 m)	5.6 oz - 450 yds (160 gr - 420 m)	6.1 oz - 490 yds (190 gr - 455 m)
Head circumference		17.5" (44 cm)	21.75" (54 cm)
Yarn required - Hat		1.4 oz - 110 yds (40 gr - 100 m)	1.8 oz - 145 yds (52 gr - 135 m)



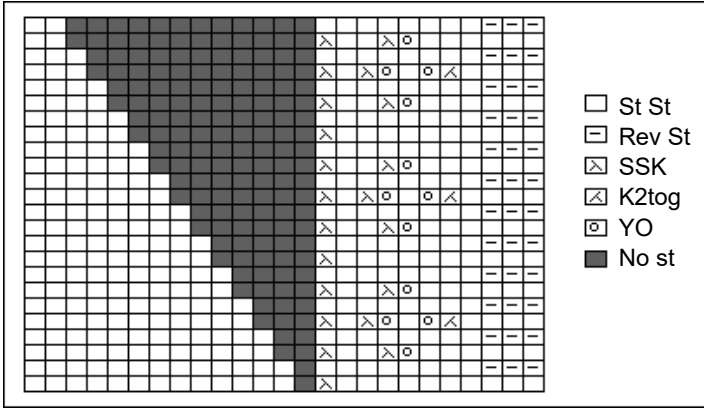
TRUMPET VINE SWEATER

RIGHT FRONT	NB	6M	12M
Cast on ____ sts. Work in twisted rib for ¾" as follows: On both right and wrong side, K1b, P1. Repeat across. End with a wrong side row.	56 sts	58 sts	62 sts
Work Sweater Front Border Chart (see page 4), continuing in stockinette stitch to side seam of sweater. (Chart does not include all of stockinette stitch area.) Continue working front border and decreasing as shown in chart until ____ sts remain for shoulder. End with a wrong side row.	19 sts	19 sts	21 sts
Front measures ____ from cast on edge. Place shoulder sts on a holder.	11.32"	11.89"	12.46"
LEFT FRONT			
Make Left Front identical to Right Front, reversing shaping, and using Left Front Border Chart (page 4). Border will be on the left edge of your knitting, and you will work K2tog to decrease along the border, rather than SSK.			
Knit across on right side. Cast on ____ sts for back neck.	18 sts	20 sts	20 sts
Knit sts for Right Front from holder, with right side facing. Total sts: ____	56 sts	58 sts	62 sts
BACK (Note that the back is knit <i>down</i> from the shoulders.)			
Work even in garter st for 5 rows. Work even in stockinette until back is ¾" shorter than front. Work in twisted rib for ¾". Bind off in ribbing.			
SLEEVE			
Count ____ rows from shoulder seam down front and down back, and mark these two points with safety pins.	36 rows	40 rows	43 rows
Pick up ____ sts for sleeve between safety pins. ↳ HINT: pick up 3 sts for every 4 rows.	56 sts	62 sts	68 sts
Work in stockinette st, decreasing 1 st at each edge every 4 th row ____ times.	11	13	15
____ sts remain.	34 sts	36 sts	38 sts
Work twisted rib for ¾". Bind off in ribbing.			
FINISHING			
Sew side and sleeve seams. Make four 6" cords: Cut a strand of yarn 34" long. Double it and twist until it begins to kink. Fold in half and allow it to twist back on itself. Attach a cord to the bottom of the sweater at each side seam and at each front corner.			

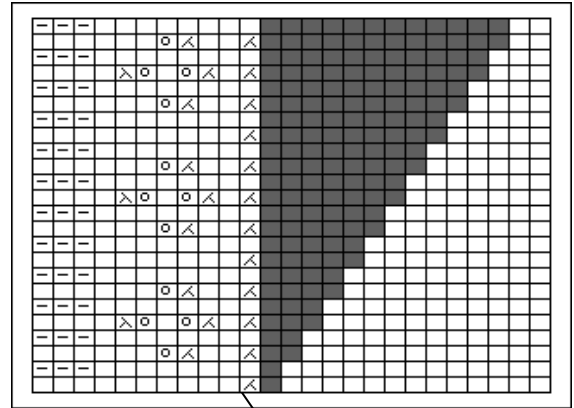
TRUMPET FLOWER HAT

Head Circumference	Small	Large
	17½"	21¾"
Cast on ____ sts. Divide sts between 3 or 4 dp needles, join ends being careful not to twist, and work circularly as follows: Rounds 1 & 2: Knit. Round 3: *(K2tog) 6 times, (M1, K1) 6 times*. Repeat between * around Round 4: Purl. Repeat these 4 rows three times. Knit 2 rounds even.	144 sts	180 sts
(K2tog) 6 times, K6. Repeat between * around. ____ sts remain.	96 sts	120 sts
Knit ____ rounds	3 rounds	4 rounds
YO, SSK, K8, K2tog. Repeat between * around. ____ sts remain. Knit one round. *YO, K1, YO, SSK, K6, K2tog*. Repeat between * around. Knit until 1 st remains at end of round. Slip to beginning of next needle.	88 sts	110 sts
K2tog, YO, SSK, K7. Repeat between * around. ____ sts remain.	80 sts	100 sts
Knit 5(6) rounds	5 rounds	6 rounds
K5, *DD, K7*. Repeat between * around, ending DD, K2. There are now ____ sts.	64 sts	80 sts
Knit ____ rounds.	3 rounds	4 rounds
K4, *DD, K5*. Repeat between * around, ending DD, K1. ____ sts remain.	48 sts	60 sts
Knit ____ rounds.	3 rounds	4 rounds
K3, DD. Repeat between * around. ____ sts remain	32 sts	40 sts
Knit ____ rounds	3 rounds	4 rounds
K2, *DD, K1*. Repeat between * around, ending with a DD using the last 2 sts at the end of the round, plus the first st at the beginning of the round. ____ sts remain.	16 sts	20 sts
Knit ____ rounds.	3 rounds	4 rounds
DD, K1. Repeat between * around. ____ sts remain.	8 sts	10 sts
STEM		
Knit 3 rounds even. K half of sts, K2tog, K to end of round. Knit 1 round even. Repeat these two rounds until 4 sts remain. Knit 3 rounds even. Break off yarn. Using tapestry needle, pull end through remaining 4 sts. Pull up tight and pull tail to inside of stem.		
FINISHING		
Make 2 "I-cord" strings as follows: On smallest dp needles, CO 3 sts. Do not turn. Instead, slide sts back to other end of needle, pull yarn across back of knitting and knit the next row. Continue to slide knitting back to other end of needle, and knit next row without turning, until cord measures 7". Break off yarn and pull through all 3 sts. Sew cords to inside of hat, on opposite sides of hat at highest purl ridge.		

Sweater Right Front Border



Sweater Left Front Border



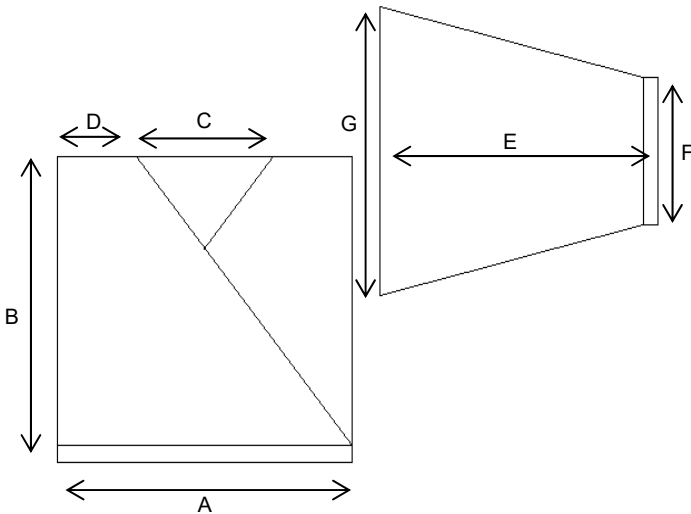
Place marker

Right Border

Row 1: K10, SSK, K to end of row.
 Rows 2, 4, 6 and 8: P until 3 sts remain, K3
 Row 3: K6, YO, SSK, K2, SSK, K to end of row.
 Row 5: K4, K2tog, YO, K1, YO, SSK, K1, SSK, K to end of row.
 Row 7: same as row 3.

Left Border

Place marker 10 sts from end of row.
 Row 1: K until 2 sts remain before marker, K2tog, K to end of row.
 Rows 2, 4, 6 and 8: K3, P to end of row.
 Row 3: K until 2 sts remain before marker, K2tog, K2, K2tog, YO, K6.
 Row 5: K until 2 sts remain before marker, K2tog, K1, K2tog, YO, K1, YO, SSK, K4.
 Row 7: Same as row 3.



	Newborn	6 month	12 month
A	10.125"	10.625	11.25
B	11.32"	11.89"	12.46"
C	3.38	3.31"	3.55"
D	3.38	3.55"	3.57"
E	7.04	7.94	8.87
F	6.3"	6.51"	6.53"
G	10.34	11.42"	12.38"

Abbreviations

DD	Double Decrease: Slip 2, Knit 1, Pass 2 slipped stitches over
K	Knit
K1b	Knit 1 into the back loop
K2tog	Knit 2 together
M1	Make 1: Increase by making a half hitch on the right needle
P	Purl
Rev St	Reverse Stockinette (purl on right side, knit on wrong side)
SSK	Slip 1, Slip 1, Knit these two together
St St	Stockinette Stitch (knit on right side, purl on wrong side)
St/sts	Stitch/stitches
YO	Yarn over
Wpi	Wraps per inch