



# The Livestock Conservancy

*A non-profit organization protecting endangered livestock and poultry since 1977*

## 2020-2022 ANNUAL REPORT



*Threatened Royal Palm turkey hens courtesy of Lana Foley. The Poultry Census found that turkey populations are holding steady.*



# CONSERVATION MATTERS

*The Livestock Conservancy is a non-profit membership organization working to protect more than 180 breeds of livestock and poultry from extinction, including cattle, chickens, donkeys, ducks, geese, goats, horses, pigs, rabbits, sheep, and turkeys. Since its inception in 1977, The Livestock Conservancy has not lost a breed on our Conservation Priority List to extinction.*

## PROTECTING THE FUTURE OF AGRICULTURE

Rare breeds of livestock and poultry protect our food systems, both now and into the future. By securing genetic diversity, we enable healthy agriculture development while preserving heritage, history, and culture. These animals represent an irreplaceable piece of earth's biodiversity that, once lost, will be gone forever.

Rare breed conservation retains animals well suited for sustainable, grass-based systems that can give small farms a competitive edge. It also broadens the marketplace with diverse fiber and flavorful foods. Their unique genetic traits offer important biodiversity that may be needed for future farms, including robust health, mothering instincts, foraging, and the ability to thrive in a changing climate.

As guardians of agricultural diversity, The Livestock Conservancy prevents extinctions, expands populations, educates beginning farmers, and helps breeders establish new markets for their products. Our programs maintain the long-term viability and sustainability of endangered breeds.

*Below, Critically-endangered Dutch Hookbill ducklings courtesy of Claire Christian. Right, Watch-listed Rhinelander rabbit by Jeannette Beranger.*

## ORGANIZATIONAL VALUES

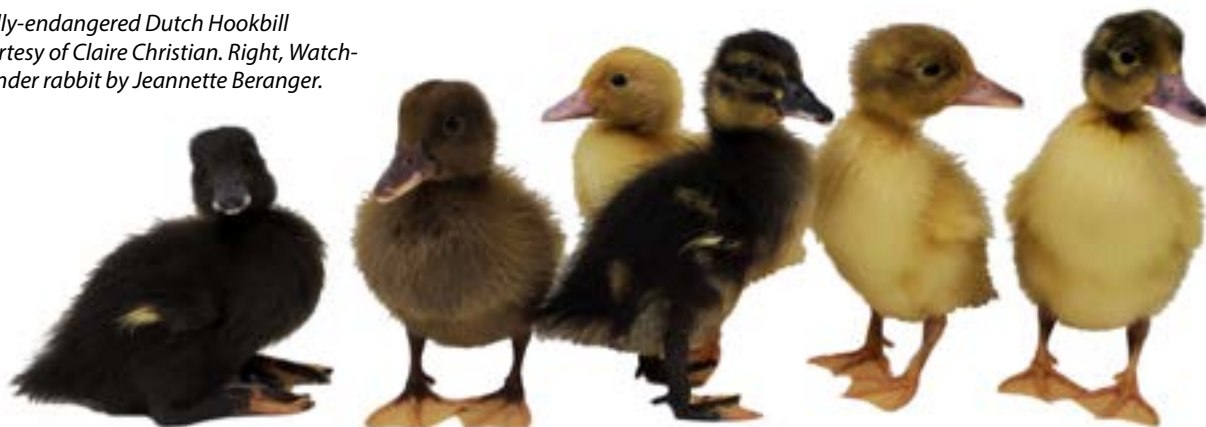
**Animal Well-being:** We support practices that evolved from the historical uses of endangered breeds and lead to their good health, longevity, and full value in American agriculture.

**Quality and Integrity:** We practice science-based genetic diversity conservation, emphasizing research and education to promote endangered breeds.

**Diversity:** We emphasize the diversity of culture, perspectives, and practices in realizing our mission, which leads to greater opportunities for endangered breeds and for human prosperity.

**Collaboration:** We encourage cooperative efforts among members of the heritage breed production chain, including breeders, producers, processors, and consumers.

**Stability:** We ensure the integrity of endangered genetics by maintaining a strong alliance with breeders and breed associations. We promote breeder livelihoods and breed resilience while supporting healthy markets and a strong consumer base.





*The Livestock Conservancy discovers and studies livestock and poultry breeds that were thought to be lost for possible inclusion in our Conservation Priority List. We investigate remnant populations, document their numbers, and analyze their unique characteristics.*

## ROOTING FOR REMNANT FLOCKS

During the past two years, Livestock Conservancy member Justin B. Pitts has spent countless hours searching for remnant flocks of Spanish goats, Coastal South Native sheep, and Cotton Patch geese. Discovering these remnant populations helps expand the genetic diversity available to breeders of animals on the Conservation Priority List.

"There is an old saying here in the South that goes, 'Root little hawg er die pore,'" he said. "That saying comes from the time when stock was free-ranged and expected to make their own living. Animals not up to the task failed to thrive. I find lost pockets of genetic treasures by rooting like an old sow and a litter of pigs."

Four flocks of goats found in Georgia, Alabama, Mississippi, and Texas are typical old-type Spanish goats with a history of isolation and a consistent appearance typical of their origin. The goats from Mississippi appear to be the last goats from that community. The owner began his flock more than 35 years ago from local goats similar to those from old family lines.

After following up on a hunch from an advertisement, Pitts discovered a flock of Beech strain Cotton Patch geese. Once numerous in the South, this strain was thought to be extinct. Pitts continues to follow up on rumors about this strain as he searches for more Cotton Patch geese flocks.

Following the death of her mother, a woman sold her remaining flock of Coastal South Native sheep. The woman who bought the sheep brought them to Pitts' attention because they have the distinctive Native look and were from an old local line with little

background information. The next step for this flock is to gather DNA samples and more family history.

## ARCHAEOLOGICAL BREED RESEARCH

The Royal Presidio of San Diego was one of the first permanent Spanish settlements on the Pacific coast. The settlement was supplied with various domesticated livestock to create flocks and herds to sustain the residents. Ancient chicken bones found at the site were evaluated by the San Diego Museum of Natural History's Zooarchaeology Laboratory to better understand the animal husbandry and food consumption practices of the Presidio's inhabitants. Their investigations revealed the first documented use of chickens for food in California. Researchers found that two different types of chickens were present in the early settlement: large fowl likely used for egg, meat, and feather production, and smaller bones likely from bantam chickens used to brood the eggs of the larger birds.

The Livestock Conservancy partnered with the Museum and a laboratory for the study of ancient DNA laboratory run by Anna Gosling at the University of Otago in New Zealand to identify which breeds may have been raised at the Presidio. Research on breed histories and their cultural ties is an important part of the Discover process for breeds.

## SCAN QR CODES FOR VIDEO

Watch conservation come alive throughout our Annual Report this year. Look for QR codes to scan to watch short videos on YouTube featuring the rare breeds described in each section.

*Photo of Watch-listed Spanish goat buck courtesy of Justin B. Pitts.*





*Watch a clip of Spanish goats and kids  
running at Brookgreen Gardens.*





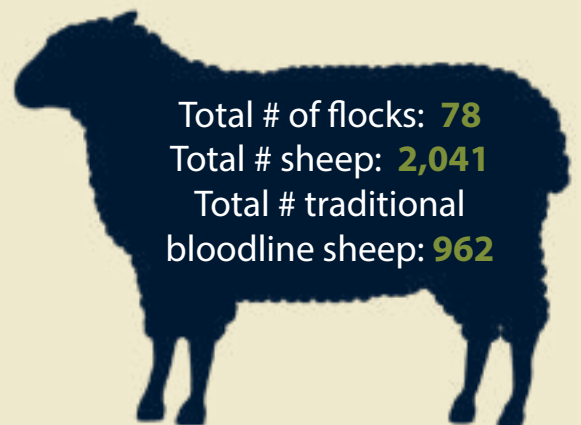
Photo of critically-endangered traditional Coastal South Native sheep flock courtesy of Justin B. Pitts.



Watch a clip of Gulf Coast sheep  
leaving a shearing shed for pasture.



## GULF COAST/COASTAL SOUTH NATIVE SHEEP CENSUS



Total # of flocks: **78**

Total # sheep: **2,041**

Total # traditional  
bloodline sheep: **962**



*The Livestock Conservancy secures populations of endangered livestock and poultry breeds through census, pedigree registration, research, and conservation breeding plans.*

## GULF COAST / COASTAL SOUTH NATIVE SHEEP

Local sheep in the Gulf Coast region thrived for centuries in widely-ranging flocks, having become well-adapted to the warm and humid environment. Recent years have seen little or no increase in the number of either flocks or sheep. In response, The Livestock Conservancy launched an in-depth census of Gulf Coast or Coastal South Native sheep, made possible by The Joe. W. and Dorothy Dorsett Brown Foundation of Metairie, Louisiana.

The census identified flocks and sheep that had not previously been documented. Traditional family bloodlines are the foundation of the breed, but now exist in a small handful of flocks, putting these bloodlines in a precarious position despite their constituting nearly half the total sheep population. Composite bloodlines built on older lines are now more widespread in smaller flocks, placing them at a lower risk of loss. The Livestock Conservancy and breeders are moving forward to collect genetic material – especially from older traditional lines – with the goal of protecting and establishing new flocks of Gulf Coast and Coastal South Native sheep.

## CHOCTAW HOGS

The Choctaw hog is a landrace swine breed found in the Southeast corner of Oklahoma. They are a hardy, self-sufficient animal long associated with the Choctaw Nation. Once an extremely important food resource, this breed is now among the rarest pigs on the Conservation Priority List. Although Choctaw hogs have been traced back nearly 500 years, only a few hundred animals exist today. To help secure this breed for the future, The Livestock Conservancy is working with breeders to increase the population and to develop markets for their meat.

Since this breed is so critically endangered, Livestock Conservancy staff members traveled to Oklahoma in 2021 to collect tissue for long term cryopreservation



in the rare breed collection at the USDA's National Animal Germplasm Program in Colorado. This important "doomsday vault" ensures the long-term preservation of important genetic resources for the future of farming. The team used an innovative, low-impact tissue collection procedure involving an ear notcher and newly developed cryoprotectant gel to collect 30 samples. The first-ever genetic samples of Choctaw hogs are now safely preserved to ensure these rare genetics do not disappear.

*Left, photo of Gulf Coast / Coastal South Native sheep. Above, longtime member Bryant Rickman holds a Choctaw hog on his farm in Oklahoma. Both photos by Jeannette Beranger.*

## POULTRY CENSUS

Censusing livestock and poultry populations in the U.S. is fundamental to the work of The Livestock Conservancy and determines which breeds may be under threat of extinction. To accurately understand the state of a breed, only breeding animals within a population are counted. Conducting a poultry census is particularly challenging because there is no registry or pedigree process for individual birds to indicate breeding population activity. This necessitates a targeted and comprehensive survey of poultry keepers that actively breed their birds.

The 2021 Poultry Census, sponsored by Murray McMurray Hatchery, counted 119 poultry breeds. Most breeds are American Poultry Association recognized large fowl, and landrace breeds on The Livestock Conservancy's Conservation Priority List. Individual color varieties within breeds were also censused for the first time.

Nearly 2,000 breeders submitted information about more than 7,500 breeding flocks. Some of the key takeaways include:

- Average flock size: 5-25 birds. Small flock sizes indicate that small breeders play a big role in poultry conservation.
- Several chicken breeds declined significantly since 2015, including Aseel, Buttercup, Catalana, Cubalaya, Houdan, Java, Sebright, and Shamo, and are now Critical. These breeds offer important options for meat, eggs, exhibition, ornament, and climate adaption.
- Belgian Bearded D'Uccle, Booted Bantam, and Japanese Bantam chickens are also becoming rare and will be studied for possible addition to the Conservation Priority List.
- Some color varieties within breeds may have been lost in recent years. The census was unable to find buff Cornish, white Houdan, and wheaten Japanese Bantam chickens. If there are breeders working with any of these varieties, please reach out to us by phone or email.

- Duck and goose populations are fairly stable, paving the way to recruit more waterfowl breeders in coming years.
- Turkey populations remained steady, except for Slate turkeys, which need more breeders.

There is far more work to be done on the census analysis, but it is already clear which poultry breeds need more focus if they are to be conserved for the long term.

## COTTON PATCH GEESE

After more than twenty years of conservation work, Cotton Patch geese, a regional American treasure used to control insects and weeds in the agricultural fields of the South, have moved from Critical to Threatened. The 2021 Poultry Census discovered more than 800 breeding birds, indicating that this landrace breed has gained enough popularity to secure a more stable future. The following brief history documents the breed's comeback:

- 2000: Breed near extinction
- 2005: The Livestock Conservancy supported member Mark See as he documented and described the breed. Promotion and expansion of breed begins
- 2012: A Cotton Patch breed club is formed
- 2015: ~200 breeding birds censused
- 2021: >800 breeding birds censused, rediscovery of historic flocks
- 2022: Breed moved from Critical to Threatened on the Conservation Priority List

Cotton Patch geese are fortunate to maintain a foothold in their traditional setting while expanding in numbers among poultry breeders across the nation who appreciate their heritage and unique attributes. The 2021 Poultry Census found many small flocks, a few large flocks, and a good many medium-sized flocks in the U.S. and Canada – a population structure that offers great hope for the security and future of this important breed.





*Watch Cotton Patch Geese on pasture. Photo of this Threatened breed courtesy of Denise Frye.*





*Watch an unedited video of Dr. Keith Youngblood preparing and administering the Poitou Foal Care Protocol.*



## POITOU DONKEY RESOURCES

- Poitou Breed Standard, translated from French to English
- Poitou Donkey Foal Support Protocol
- Poitou Jack Assessment Form
- Poitou Donkey Standard Video on YouTube
- How to Collect a DNA Sample Video on YouTube
- How to Microchip Your Donkey Video on YouTube



All resources are available online at **<https://bit.ly/poitoudonkeys>**

*Critically endangered Poitou donkeys on pasture in Grandview, Texas. Photo courtesy of Patrick Archer.*



## POITOU DONKEY CENSUS AND REGISTRY

The Poitou donkey is an ancient and now globally-endangered breed. Developed in western France, the donkeys were highly valued in Europe for the production of large working mules. Poitou donkeys were first brought into the United States during the colonial period and the sturdy, gentle donkeys were used in George Washington's breeding program to develop the American Mammoth Jackstock. Poitou donkeys in North America are an important reservoir of genetics for the breed's survival. Stewardship by breeders in America helps keep this breed viable and secure for future generations.

The Livestock Conservancy conducted a North American census of Poitou donkeys in 2021 thanks to a gift from Patrick Archer and Christopher Jones of Grandview, Texas. Coordination with several longtime breeders helped locate more than 130 donkeys. Owners provided information on the age, sex, height, and parentage of the donkeys. In some cases, records were lost or donkeys were undocumented, so even the most basic history about a donkey, such as a former owner or breeder's name, proved useful for tracking down the parentage and origin of a number of them.

Pedigree information from owners, old hand-written records, and data from the French breed association were used to establish a registry for Poitou donkeys in America. One goal for Poitou conservation is reciprocity with the French registry, and contacts at the Association Races Mulassieres Poitou and the Alsinerie du Baudet du Poitou have been eager to assist. Recognition of The Livestock Conservancy's Poitou registry by these organizations will allow the exchange of data and pave the way for the possible exchange of genetics.

Texas A&M University is building the first Poitou donkey DNA database for the North American Poitou population. Their procedures will be aligned with those used throughout Europe. As new foals are registered by The Livestock Conservancy, the DNA database will allow for parentage verification.

## POITOU DONKEY FOAL CARE PROTOCOL

All equine breeding endeavors are challenging, but even more so for Poitou donkeys. Jennets can be difficult to get in foal and, without special care, newborn foals may be lost in their first few days to infections, like pneumonia. In a breed this rare, there is little room for error and every foal matters.

With the generous support of the William E. Dean III Charitable Foundation, The Livestock Conservancy worked with breeders in Texas and their equine veterinarian, Dr. Keith Youngblood, to compile several years of observations of an immune-supportive plasma treatment used on the farm. The protocol is now available for download from The Livestock Conservancy's website in both English and French. An accompanying hour-long video is available on YouTube.

## POITOU DONKEY BREED STANDARD

The Livestock Conservancy translated the Poitou donkey standard from French to English to assist breeders in the U.S. with their breeding decisions. The standard was presented at a virtual gathering of Poitou owners in 2021.

## 2021-2022 LIVESTOCK CONSERVANCY REGISTRY UPDATES





## CONSERVATION PRIORITY LIST UPDATES

The Livestock Conservancy determines conservation priorities based on a breed's annual number of registrations in the United States, its estimated global population size, and its genetic history. These numbers are used to rank the threat of extinction for an individual breed using the following criteria:

- **Critical** breeds have fewer than 200 annual registrations in the U.S. and an estimated global population less than 2,000.
- **Threatened** breeds have fewer than 1,000 annual registrations in the U.S. and an estimated global population less than 5,000.
- **Watch** breeds have fewer than 2,500 annual registrations in the U.S. and an estimated global population less than 10,000.
- **Recovering** breeds have improved in numbers and are approaching graduation from the Conservation Priority List.

**Ayrshire cattle** graduated from the Conservation Priority List in 2021. They are an excellent choice for small dairies, family farms, and mixed-breed dairy herds. Ayrshires were imported from Scotland to the northeastern United States at least 200 years ago. Their selection for life in rugged landscapes confers the ability to efficiently convert forage to milk, making them productive dairying animals for grass-based operations. Ayrshire cows can produce 12,000–17,000 pounds of milk per year, with an average milk fat content of 3.9%. Congratulations to our dedicated partners, the U.S. Ayrshire Breeders Association, and to all the Ayrshire breeders who have worked hard to secure this breed!

**Galloway cattle** moved from Watch to Recovering in 2021 because of continued growth in England, Germany, Denmark, and other countries. Originating in Scotland, Galloway cattle are cold-adapted and sturdy. Their thick double coats shed snow, sleet, and rain, insulating these medium-sized, polled cattle. Although they do not grow rapidly, patience pays off in their well-marbled, flavorful beef.

**Heritage Shorthorn cattle**, also known as Milking Shorthorn – Native, moved from Critical to Threatened in 2021. The breed's inherent versatility, and significant promotional efforts by breed associations and breeders, helped grow the breed's popularity. The Heritage Shorthorn's docile nature, milk producing ability, feed efficiency, maternal instincts, and good rate of growth make them ideal cattle for a variety of farming situations. Through the foresight of several breeders, there exists a large reservoir of Heritage Shorthorn semen that dates as far back as the 1950s. This valuable resource, which is still fairly uncommon for rare breeds, offers Shorthorn breeders access to genetic material for diversifying their herds. From family milk cows to commercial beef production, Shorthorns are a true dual-purpose breed.

**British Soay sheep** were added to the Conservation Priority List in 2022 as a Threatened breed. This is an ancient, short-tailed sheep that descends from a feral population on Soay, an island in the St. Kilda archipelago of Scotland's Outer Hebrides. While the primary population remains on the islands, some of the sheep were brought onto the U.K. mainland, and were later exported to Europe and North America. About 450 Soay sheep were registered in the U.K. in 2021, and about 90 British Soay were registered from North America. Registration occurs through the Rare Breeds Survival Trust Combined Flock Book.

Soay sheep are small (50-80 lbs.), nimble and almost deer-like, with slender bones and clean faces and legs. Their small stature belies the breed's hardiness, resilience, and self-sufficiency. Isolated on Soay for thousands of years, the breed was shaped by the harsh North Atlantic environment into a cold-hardy, parasite-and-disease-resistant sheep. Ewes can lamb easily for up to 10 years and they are good mothers. Soay wool is shed in the springtime and can be rooed by hand. Fiber quality varies from woolly to kempy with colors ranging from light brown to near black. Soay also produce a mild-tasting, low-fat meat. With their small size and lighter impact on the soil, they are useful for ecologically-sound grazing.





*Browse the 2022 Conservation Priority List.  
Ayrshire cattle (photo by Jeannette Beranger)  
graduated from the Conservation Priority List in 2021.*



Two types of Soay sheep are present in North America, the British Soay and the American Soay. The latter is a larger sheep that is not rare. British Soay sheep born in North America can be registered if their parents were registered.

**Navajo-Churro sheep** thrive in arid environments and are especially hardy, but the enduring drought in the Southwest has forced some breeders to scale back. Annual registrations have fallen below 200, moving them from Threatened to Critical in 2021. Navajo-Churro sheep have been integral to Navajo, Hispanic, and Anglo cultures in the Southwest for more than 400 years. They are small, intelligent sheep with a strong flocking instinct, generally long lived, and excellent mothers. Navajo-Churro sheep have a double coat of fine underwool and coarse outer hair. Low grease content and open locks make hand processing this wool easy. Their fleece is important in their desert homeland as it helps them conserve water and is superbly suited to the textiles produced in the local region, which are famous for their unique qualities and cultural relevance.

**Shire horses** moved from Threatened to Critical in 2021. Descended from medieval war horses, these tall, strong animals were used in 18th century England to power farm implements and draw heavy loads. Even as the railway eclipsed the canal barge, Shire horses remained important for industrialization, hauling freight from docks and railway stations to warehouses, and from warehouses to businesses, until the emergence of motorized transportation. Today's Shires are used in riding, jousting and archery competitions, forestry, and exhibition – especially exhibitions that demonstrate their tremendous draft power.

The **Colonial Spanish horse** group consists of a number of different populations that descend from horses brought to the New World by Spanish explorers and conquistadors hundreds of years ago. These horses served as valuable mounts, pack, and draft animals for explorers, indigenous

peoples, cavalry, and ranchers, and were once widespread and numerous. Over time, herds became differentiated from one another by both natural and human selection. Despite their hardiness, endurance, and beauty, numbers of Colonial Spanish horses declined greatly during the 1800s and many regional strains were simply folded into other breeds that were growing in popularity. A few of the remaining pure Colonial Spanish strains were carefully stewarded for generations to maintain their genetic integrity and distinctive traits. Some strains have established independent, stand-alone registries and conservation programs, and those strains are listed individually on the Conservation Priority List. Strains with populations too small to easily stand alone are classified under the Colonial Spanish Horse heading, including Choctaw, Baca-Chica, Santa Cruz, Sulphur, and Wilbur-Cruce. With persistently low numbers of registrations for several years, this group moved from Threatened to Critical in 2022.

While the strains are low in numbers right now, each one persists due to the work of tenacious breeders who are dedicated to conserving the horses. Many of these horses are found in the Western U.S. where they fit beautifully into roles like ranch work, competitive trail riding, endurance riding, packing, and equitation. Some are even making a name for themselves on the East Coast within fox-hunting, driving, and dressage circles.

**Miniature donkeys** moved from Recovering to Watch in 2021 because of declining registration numbers. Miniature donkeys descend from a composite of small Mediterranean donkeys brought to the U.S. in the early 20th century. Although small donkeys continue to be used as pack and cart animals in their native region, Miniature donkeys in the U.S. are kept primarily as pets and companion animals. They are docile, trainable, and friendly, all good characteristics for fitting in with a family. Miniature donkeys are also suitable companion animals for other equines or livestock. They can be trained to pull or pack, and are strong for their size.



## GENETIC PRESERVATION METHODS FOR EQUINE BREEDS

Genetic preservation is an important component of modern breed conservation strategies. The updated second edition of this manual, supported by Lou and Kelly Gonda of El Campeon farms, provides detailed instructions for the preservation of genetic materials from horses and donkeys. By using the techniques outlined to collect and store sperm, eggs, embryos, and body tissues, owners, veterinarians, and breed associations can preserve genetic resources for decades.

This manual is a valuable resource for those who may not routinely use genetic preservation techniques. The authors provide detailed protocols for each technique, including instructions for on-farm use in emergency situations and a helpful list of laboratories, services and contact information. A free downloadable PDF will be available on The Livestock Conservancy's website once complete.



*Critically endangered Santa Cruz Island strain Colonial Spanish mare and foal. Photo courtesy of Lou and Kelly Gonda of El Campeon Farms.*



## SHAVE 'EM TO SAVE 'EM INITIATIVE



2,974 FIBER ARTISTS



599 FIBER PROVIDERS



RAREWOOL.ORG

Find Shave 'Em to Save 'Em enrollment forms, fiber profiles, rare wool pricing info, and other resources for Fiber Providers and Fiber Artists online at **RareWool.org**.

FIND #SE2SE ON SOCIAL MEDIA:



Facebook



Ravelry



YouTube



Teachable



*Fiber Provider Lucienne Brown holds a Threatened Dorset Horn ram. Photo courtesy of Lucienne Brown.*

*Watch a Shave 'Em to Save 'Em promotional video to learn more about joining the program.*





# DISCOVER | SECURE | SUSTAIN

*The Livestock Conservancy works as a catalyst to sustain rare livestock and poultry breeds by reintegrating these animals into agriculture and food systems. We give jobs back to endangered animals and train the next generation of farmers to become breed stewards.*

## SHAVE 'EM TO SAVE 'EM

Conservation work is often economically driven. In the absence of an established market, The Livestock Conservancy created one for rare breed sheep wool and fiber with the launch of the Shave 'Em to Save 'Em (SE2SE) Initiative in 2019, supported by The Manton Foundation, The Noah Foundation, and Charlotte Hanes. Originally designed to have a 3-year lifespan, SE2SE has found staying power. Thanks to a virtual community of more than 8,000 fiber artists, shepherds and fiber resellers, the SE2SE program continues to expand and no longer has an end date.

In-person fiber festivals waned during the COVID-19 pandemic, so online content expanded, especially on social media. Through monthly Woolly Wednesdays, live chats on Facebook with fiber arts experts and educators, and quarterly fiber arts challenges hosted on Facebook groups and Zoom, SE2SE continues to reach new artists and drive a growing demand for rare wool. The seven fiber arts challenges hosted by The Livestock Conservancy have had more than 560 total participants and have earned more than \$10,000 in program revenue. For many participants, SE2SE fiber arts challenges are their first introduction to The Livestock Conservancy and rare breeds.

"I've been surprised by some of the wools," Fiber Artist Katherine Manfree said. "I bought Karakul roving and it spun so effortlessly I needed to buy more to weave into a rug. I would not have delved into the world of wool this way without SE2SE."

In 2021, The Livestock Conservancy received a grant from The Center for Craft to create rare sheep fiber profiles. Written and designed by rare wool expert Deborah Robson, the 24 profiles are used by both artists and shepherds to learn more about each breed's unique fiber qualities and best uses, which is especially helpful for shepherds marketing their fleeces and fiber products.

"I found out about SE2SE while doing some self-guided wool research for a fiber arts job at a heritage village," Kyle Leforte said. "I am planning on participating in SE2SE partly for fun and partly so when visitors to the village ask me questions about Hog Island and other heritage wools, I have better answers. These fiber profiles are extremely helpful."

This year, pricing of rare wool fleeces and products and the impact of SE2SE were assessed through a survey of more than 1,000 Fiber Providers. Many shepherds and fiber sellers shared their success stories and their need for additional tools to further improve their sales. A big takeaway from the survey is that SE2SE is having a positive impact on fiber providers' income and on endangered breed conservation. **More than half of respondents sold more heritage breed fiber since joining SE2SE, and 43% of shepherds increased their flock sizes to meet demands for fiber.**

"Without SE2SE, I would be another farm using my wool for mulch or selling to a wool pool and counting it as an expense," said Fiber Provider Lucienne Brown, pictured left with a Dorset Horn sheep. "Now I can count on selling my fiber directly to my customers and seeing it as an income. My sheep and I are so happy to be a part of an amazing program run by people who care with equally amazing customers. Thank you SE2SE."

SE2SE shepherds, resellers, and artists are making a difference for endangered sheep. Through online programming and in-person fiber festivals, The Livestock Conservancy continues to expand consumer interest in rare wool products to secure rare sheep for future generations.



# DISCOVER | SECURE | SUSTAIN

## 2020 AND 2021 LIVESTOCK CONSERVANCY MICROGRANT RECIPIENTS

*Small financial awards make a big difference for heritage breeders. Microgrants put funds into the hands of people who steward rare livestock and poultry for the security of tomorrow's food and fiber systems. To date, The Livestock Conservancy has awarded more than \$70,000 to small farmers, ranchers, and shepherds across the U.S., thanks to gifts from Louis Eubanks, Drs. Pam Hand and Will Hueston, KW Cages, Pat Lusted, Drs. Marie and Stephen Minnich, Premier 1 Supplies, the Stucki Family Foundation, and The Manton Foundation.*



Youth Microgrant recipient Tilly Donohoe expanded her flock of heritage breed chickens for her growing egg business. She also made custom labels to educate customers about her breeds.



Youth Microgrant recipient Emalee Vickers built a new winter-accessible farrowing pen for her herd of pasture-raised Red Wattle sows in Montana.



Youth Microgrant recipient Bailey Hirschboeck built a mobile goose tractor for her Cotton Patch geese to expand the number of breeding pairs on pasture year-round at her farm in Connecticut.



Youth Microgrant recipient Violet Castillo-Osman upgraded her egg incubator to increase her hatch rate of White Holland, Black, and Slate turkeys.



Youth Microgrant recipient Cullen Santino Le Roy built a shelter for his Myotonic goat bucks to increase the genetic diversity of his growing herd in Illinois.



Youth Microgrant recipient Felicity Hart hand milks a herd of Milking Devon and Kerry cattle. She improved calf pens to make milking safer at the family dairy.

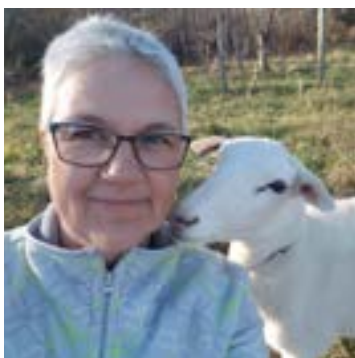


Youth Microgrant recipient Emma Rexrode built additional breeding and brooding pens for her Black and Chocolate turkeys, improving the hatch rate and the genetic health of her flocks.



Premier 1 Supplies Microgrant recipient Christina Weger purchased solar-powered electric poultry fencing to separate and protect her seven breeds of heritage ducks.





Crystal Criswell installed a handling system with a gathering pen, sorting gates, and weighing scale next to her barn so evaluating the health of individual St. Croix sheep would be easier.



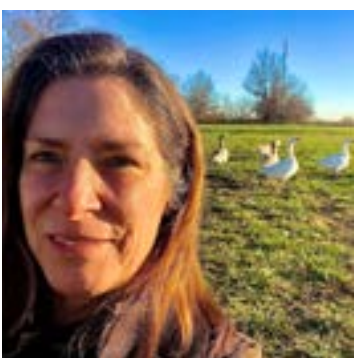
Laura and Bill Jensen improved the fencing and grow-out areas on their farm in Georgia to increase their number of Meishan breeding sows and boars.



Martha Hoffman Kerestes made improvements to her barn in Illinois. The new structure makes milking easier for her Dutch Belted and Heritage Shorthorn cattle.



Janna Miller built a shearing shed on her farm in New Mexico for Navajo-Churro sheep. She also joined the Shave 'Em to Save 'Em Initiative to begin marketing her fleeces.



Audrey Morris improved the brooding facilities for her flock of Cotton Patch geese in Kansas. Protecting the geese from predators and other disturbances dramatically increased their hatching rate.



Travis Morris upgraded to a larger incubator to increase the hatching and brooding rates of his Jersey Giant, Java, and Old English chickens, and rare breed turkeys.



Nash Farm in Texas restored a corral for their Gulf Coast Native sheep and increased their educational outreach about the endangered breed.



Naturally Golden Family Farms Co-op produces cheese made from Guernsey cattle. They purchased additional equipment to transport milk and store cheese.



Megan Teel is using early ultrasound procedures to detect twin embryos in American Mammoth Jackstock donkeys. Early intervention will increase the number of surviving foals.



The Barcenas family raise Lincoln and Romeldale/CVM sheep at Prado de Lana farm. They are improving grazing opportunities with electro-net fencing on their pastures.





Sarah Campbell improved and expanded her barn at Hickoryneck Rabbitry to keep more breeding groups intact while maintaining two separate bloodlines.



Arik Engstrom added new breeding pens for Russian Orloff chickens at Equinox Giants Farm to reduce stress and improve the genetic diversity of his flock.



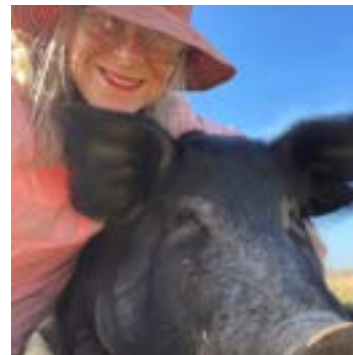
Jody Jess established a seasonal grass-based dairy using Kerry cows at Little Black Cow Dairy. The mobile dairy unit will help meet growing demand for value-added products, such as yogurt and ice cream.



Channa Kinohi installed new turkey fencing on pasture for her breeding and growout flocks of Royal Palm, Slate, and Narragansett turkeys.



Jessa Lane and Jeff Kreis improved and predator-proofed outdoor runs on their farm to correspond to each of their indoor pens for heritage chickens and turkeys.



Katy Turnbaugh installed paddocks and extended water lines for her Mulefoot hogs and Holland, Barred Rock, Buckeye, and Araucana chickens.



Breed Association Microgrant recipient the American Cotswold Records Association improved their communication and education efforts with an updated website and flock book.



The Lippitt Morgan Preservation Project received a Breed Association Microgrant to collect, freeze, ship, and store semen from several rare bloodlines.



Emergency Grant recipients Eliseo Curley and Drake Mace received hay and feed courtesy of Standlee Western Forage to help their critically endangered flocks of Navajo-Churro sheep.



Emergency Grant recipient Shannon Hawkins collected the semen of an aging Marsh Tacky stallion from a very rare bloodline that was almost lost for future breeding.





*"After receiving a Microgrant to install a 50-foot water line, I can now reach the calving pen, the water tanks, and even the two closest grazing paddocks. Over the winter, carrying the shorter hose into the basement was a breeze and made my twice-daily water efforts remarkably easier. The time savings have been incredible. It is far easier to get chores done quickly and move onto higher level cattle management and planning now that watering is such a simple process." ~ Martha Hoffman Kerestes, Streator, Illinois*





#### **DID YOU KNOW?**

The Livestock Conservancy partnered with breeders of American Milking Devon cattle in 1978 to establish the American Milking Devon Cattle Association. Today, that organization recognizes more than 100 heritage breeders, registers roughly 200 American Milking Devon cattle each year, and prevents the extinction of a breed that seemed so possible 45 years ago.

The Cultivating Leadership Initiative supports the growth of organizations on the front lines of saving endangered livestock and poultry. The initiative harnesses the power of working together to multiply the impact on conservation.



## CULTIVATING LEADERSHIP INITIATIVE

People save animals. Since its earliest days, The Livestock Conservancy has established, maintained, and supported breed associations, clubs, and registries. These breeder organizations have been our closest and most important partners for more than 45 years. By bringing together people focused on individual rare breeds and creating community, breed organizations help prevent the extinction of endangered livestock and poultry.

Nearly all breed organizations for endangered livestock and poultry are volunteer-led and can seldom offer leadership or management training to their volunteers. The fine details of leadership and working together can become complicated and emotional, which splinters groups rather than unifying them. As the sole umbrella organization for rare and endangered livestock and poultry breeds and breeders in the United States, The Livestock Conservancy serves as a neutral resource for breed organizations and breeders to consult in times of trouble. The Livestock Conservancy's advocacy and outreach enables associations, clubs, and registries to focus on effective inclusion of breeders, and to develop sound procedures for the long-term genetic management of their breed.

The Cultivating Leadership Initiative, made possible by The Manton Foundation, is designed to help breed organizations establish and achieve high standards of operation that will contribute to their longevity and continued success. **Thriving breed organizations save more livestock and poultry.** Components of the Cultivating Leadership Initiative include training, accreditation, and pedigree registration services. These programs are available as optional services so organizations may adopt whichever building blocks are most needed to address their own situation.

**Training.** Breed organization officers and registrars have few resources for training and continuing education. The template for providing those much-needed opportunities was developed from best practices gleaned from businesses, non-profits, and

well-functioning breed associations that can be used by any group hoping to grow and improve. Using this template, training was conducted at in-person conferences for more than a decade. The curriculum was expanded into a series of nine webinars that address best organizational practices, setting the stage for these groups to identify gaps and improve their organizational management. This expanded digital training series offers advice on most-needed topics identified by breed organizations, including association responsibilities, articles of incorporation, by-laws, policies and procedures, board management, internal and external communications, and conflict resolution.

**Accreditation.** Voluntary accreditation for breed organizations encourages the adoption of best practices. The accreditation process offers check points for higher levels of organizational management, resources to help get there, and public affirmation of these accomplishments. Breed organizations who invest in the best practices that make up the accreditation standards will realize better communications within their organization, greater trust, more clear and efficient management practices, easier facilitation of its mission, and will attract more breeders to join their thriving group.

**Pedigree Registration Services.** A major responsibility of breed associations is registration of animals within the breed. By offering this service as a neutral third party, The Livestock Conservancy removes a source of controversy for some breed organizations. The Livestock Conservancy provides registration services for several rare breeds, including some that have no existing association. The Leicester Longwool Sheep Breeders Association was the first established organization to transition their registry to The Livestock Conservancy, and more are planned for the coming years. The Livestock Conservancy's reliable third-party pedigree registration service, at an affordable cost to breeders, will help secure rare genetics, increase accessibility of information for breeding decisions, improve the financial value of individual registered animals, and safeguard historical records for years to come.



# MEMBERS & SUPPORTERS

*THANK YOU for your membership and support. You are helping discover sheep flocks that have nearly disappeared, secure cattle herds through census and registration, and sustain Critical geese through Microgrants. Your membership makes a difference every day.*

## \$10,000 AND ABOVE

Anonymous (4)  
Amy P. Goldman Foundation  
Jay H. Calvert  
William Dean Charitable Foundation  
Dudley Diebold  
Joe W. & Dorothy Dorsett Brown Foundation  
Stannard & Dorothy Dunn Charitable Trust  
Ruth L. Eckert  
W. Cabell Garbee II  
Lou & Kelly Gonda  
Pamela Hand & Will Hueston  
David Holmgren  
Ann Huebner-Waller  
Brian Larson & Jennifer Garrett  
Carolyn T. Larson  
Manton Foundation  
Marie & Stephen Minnich  
Noah Foundation  
Carol Postley  
John Rogers

Charles Taft  
The Charlotte Hanes Foundation  
Thomas W. Walvoord  
Kari G. Wenger

## \$5,000 - \$9,999

Patrick Archer & Christopher Jones  
Anne Hendricks Bass Foundation  
Van Brown & Beth Tillman Center for Craft, Creativity and Design  
Cornerstone Morgan Horse  
Therese Coucher & Rick Wilson  
Louis Eubanks  
Marjie Findlay  
William J.J. Gordon Family Foundation  
Robyn S. & Robert M. Metcalfe  
The DeVlieg Foundation  
Lawrence E. Rushton

## \$2,000 - \$4,999

Joan Ballitch  
Irene Banning  
Gloria Basse  
Donald & Patricia Bixby  
Ruth B. Blaney  
Barbara B. Bowman  
Isabela Castaneda  
Clif Family Foundation  
David & Brenda Day  
Robert O. Gjerdingen  
Ruth & Stephen Grant Fund of Triangle Community Foundation  
Barbara Haupt  
Matt Hemmer  
Edward & Andrea Jakes  
Patricia Lusted  
John & Sharon Metzger  
Mary Moix  
Mary Ellen Nicholas  
Sandra E. Nordmark  
Wendy W. O'Brien  
Arnold Penner  
Sedgwick County Zoo

Marion & Vi Stanley  
Ann Staples  
Stucki Family Foundation  
Ann L. Vonnegut & Chris VonFrieling

## \$1,000 - \$1,999

Anonymous  
Mike & Jean Archer  
Linda D. Barta  
Bois d'Arc Farm  
Clarence Brown & Pablo Villagomez  
Samuel J. Brungardt  
Jennifer Clausen  
Carol J. Collins  
Toodie Connor  
Darrell F. Corti  
Marian Couch  
Ariane Daguin  
Joe Denney  
Mary Ellenberger  
Federal Strategies LLC  
Melissa Forster  
Julie Gauthier

## DONOR SPOTLIGHT - CAROLYN T. LARSON

*"The Livestock Conservancy makes me feel appreciated. It's a pleasure to see them grow and to be a part of their mission." ~ Carolyn Larson*

Members of The Livestock Conservancy since the 1980s, Carolyn and her late husband Lowell enjoyed Dominique chickens and other rare breeds for many years at their Buffalo Ridge Farm. Equine breeds, specifically carriage horses, are near and dear to their hearts. Beginning in 2015, Carolyn and Lowell generously supported the conservation of American Cream and Caspian horses, as well as Dexter cattle with major gifts. Recently, Carolyn funded a full-time communications coordinator. Her \$50,000 gift and multi-year pledge of support are funding a salary and related personnel expenses, including continuing education, software, and equipment.



"The Livestock Conservancy communications inform and promote the heritage breeds mission, but first you need to get an audience's attention," Carolyn said. "The exposure on social media can't be matched."





*"We choose to support The Livestock Conservancy because our Southdown sheep, Sebastopol geese (pictured with our son Mason), Crevecoeur and Cochin chickens bring so much joy into our lives. We want to spread a love for rare breeds that are threatened so others can take up the cause of their conservation. The Livestock Conservancy identifies where work needs to be done and provides rich education to pass on to our community." ~ Angela McClary of Forest Creek Farmhouse in Fenwick, Ontario*

Elyse Marie Grasso  
Jessica Hart & Kenneth Moore  
Matthew Hunker  
Anneke Jakes  
Brad & Lisa Judge  
Jennifer Kahrl  
Alison Kerr  
Darlene M. Lee  
Charles & Jacquetta Lewis  
Ed Lomont  
Ken & Oogie McGuire  
Patrick L. McNally  
Bart Noll  
Douglas A. Nunn  
Bruce & Marge Petesch  
Frank R. Reese  
Jesse E. Roberts, Jr.  
Nicole & Dan Salvato  
Kathleen & Kerry Skeen  
Gary & Sandy Sojka  
Susan Sponenberg  
Katherine Sproull  
Liz M. Sullivan  
Phyllis Taylor  
Susan & David Wase  
Angela White  
John Wilkes  
Judith R. Willson  
Terry & Judy Wollen  
Lucien Wood  
Bruce Woods

#### **\$500 - \$999**

Debbie Adams  
Marian M. Aikman  
Albert L. Arline  
Charles Bauer  
Marian & Dennis Bires  
Heather Biszak  
Barry & Linda Bolewicz  
Colleen P. Bowden  
Brian & Michele Brane  
Robert H. & Juliette H. Bullock

Norman Burns  
Lisa Butterfield  
Susan Cannon  
Joyce Carta  
Byran L. Childress  
Conerly Road School PTO  
Conner Prairie  
Linda Daly  
Karena Elliott  
Kathleen Finlay  
Barksdale Garbee  
Charles M. Graham  
Helen V. Griffith  
Philip & Kathy Griggs  
Andrew Heltsley  
Paul J. & Jane Henningson  
Steven Hopp &  
Barbara Kingsolver  
Pamela Karen Johnson  
Patricia K. Johnston &  
Kevin Matthews  
Jennifer Kouvant  
David & Heather Loomis  
Alison Martin  
William Edwin McDonald  
Dean Meier  
Jane Moran  
Elisa C. Morgan  
Suzanne Paroski  
Christopher Payne  
Jennifer Pitino  
Walker & Marjorie Rayburn  
Frances M. Rehwald  
Rex & Judy Rieke  
Mark Rushakoff  
Ben Schuemann  
Virginia Sebra  
Robert A. Siever  
Paul & Kathy Simpson  
Jonna Skehan  
Robert Michael Smith  
Sonja Maria Solomonson  
Barbara K. Sweet

The Bolton Fair, Inc.  
Landon K. Thorne  
Karen & John Thornton  
Trans Ova Genetics  
Sabrina M. Vassar  
Sarah Vincent  
Josephine Rhodes Waite  
Effie E. Westervelt  
Gretchen Whisenand  
Tamara E. White  
Dana Winter &  
Wanda Supanich  
Katherine Yates  
Jean Young

#### **\$250 - 499**

Dave Anderson  
Paul R. Andrews  
Charles & Marilyn Barnes  
Daniel Barnett  
Katharine Battle  
Nan Elise Berry  
Madelon L. Bradshaw  
Richard Browning Jr  
Katherine Bueler  
Keisha Cameron  
Patrick Carpenter  
Susan A. Carver  
Caspian Horse Society of the Americas  
Rachel A. Catlett  
Niels Chapman  
Harriet Ciccone  
Joseph Clark  
Marcus F. Cody  
John E. Colwell  
Paul S. Conklin  
Dana Connell  
Charlene & Paul Couch  
Margaret Couch & Tod Serfass  
William Coughlin  
Diane C. Craddock  
Eleanor Crosby

Aaron Cunningham  
Lawrence Davis  
Bob Doxey  
Barclay Dunn  
Dana Dutton  
Cynthia A. Dvergsten  
Bradley P. Edin  
Steve W. Edwards  
Margaret Ferguson  
Gayle Flinn  
John Fraser III  
Kris Fulwiler  
Wayne & Billie Anne Gebb  
M. Ellen Gellerstedt  
Lynn Gilliss  
Leslie Gompertz  
Sunny Goodier  
Gabrielle Gordon  
Phillip & Joann Grayson  
Jo-Ellen & Mike Greene  
Lisa & Stephen Grubb  
Susan C. Harman  
Linda & Paul Harper  
Cynthia Haseloff  
James E. Held  
Mary L. Henze  
Laurie A. Herman  
Carol Johnson  
Lloyd B. Johnson  
Catherine Kemmerling  
Tom & Sue Krebs  
Ruth L. Leffler  
Joanne Rogers Luebbert  
Daniel & Erin Matica  
Robert C. & Diane May  
Gail Mayo  
Linda H. McKittrick  
Katherine McLeod  
Lyle G. McNeal  
Francis & Monika Mencil  
Ann Miller  
Douglas K. Miller  
Frances Fisher Moore



# MEMBERS & SUPPORTERS

## \$250 - 499 CONTINUED

Joanne Nissen  
George L. Ohrstrom II  
Mary Ording  
Karen J. Philhower  
Privett Hatchery Inc  
Linda S. Raynolds  
Sheila Roberts  
Deborah Robson  
Joe Saxon  
Beth & Randy Sears  
Ronald H. Segal  
Allen & Sandra Simpson  
Andrea Small  
Kerri Stubb  
Marie Terlizzi & Robert Dobbs  
Angelique Thompson  
Pamela L. Thompson  
Stephanie Van Parys  
T. Tench Vans-Murray-  
Robertson  
Judy Wayte  
Peter D. & Ann Weigl  
Minna White  
Brian & Menolly Wilcox  
Susan L. Woodward  
John & Pamela Woollis  
Christine Wright  
Susan L. Wright  
Elizabeth Yoder  
Rosa Angelica Zapata  
Glenda Zeeb  
Beryl F. Zimmeroff

## \$100 - \$249

Ellen Abels  
Andrew & Krista Abrahams  
Mary M. Ackerly  
Katie Adams  
Leticia A. Alamia  
Doreen Alexander  
Robert Alexander  
Frances Meadows Allen

Karen Allen  
Tracey L. Allen  
Lucta J. Allen-Gerald  
John Allman  
Virginia Ambrose  
Elke Amenda-Spirakis  
American Mulefoot  
Breeders Association  
Marissa Ames  
Susan K. Ammerman  
Karl Anderson  
Eric Andrews  
Erin Angulo  
Anonymous  
France Archambault  
Richard Arnold  
Travis Arnold  
Janet G. Atkins  
Ronald & Betsy Atkins  
Tina Atkins-Dean  
Larry Ator  
Amber Baker  
Laurel E. Baker  
Penelope Baker  
Joann Balis  
Krista Bannak  
Kate Banner  
Lee Barnes  
Paula Baron  
James Barr  
Susan A. Barrett  
Charles Barth  
Susan Barth  
Daniel K. Barthels  
Robert Bartlett  
Roy Barton  
Pilar Bauta  
Lynda G. Beam  
Mary Beausoleil  
Michele Beener  
Jerold Bell  
Donna Benedict  
Allan & Joan Benjamin

James L. Benson  
Lynne Benson-Colbert  
Nancy P. Bent  
Jeannette & Fred Beranger  
Michael D. Berger  
Silas Bernardoni  
Wendell & Tanya Berry  
Hesperia Bevan  
Turbo Property  
Gary Bible  
Monica Bittner  
Rick & Pat Blaney  
Patty Blanton & Bob  
McConnaughey  
Brett Hogan Bodily  
Frederick W. Boelt  
Jennifer Bogut  
Melinda Boomgaarden  
Kelly Boone  
Gary Lee & Tammy Borkowski  
Nancy Boschetto  
Jen Boulden  
Jeffery Bournes  
Peter C. Bowers  
Michael Bowling  
Dean Boyd  
Colleen Boye  
Wax Brackett  
Rick Bradbury  
Deborah Bradford  
Paul Bradshaw  
Maggie Brandt  
Alan Brauer  
John Braun  
Robert J. Braun  
James & Carol Bray  
Kathi Breen  
Brian & Amanda Beheler  
& Family  
Sierra H. Bright  
Tim & Deanna Brix  
Corrine Brown  
Dave Wayne Brown, Jr

Joel D. Brown  
Mattis Brumbach  
Judy S. Brummer  
Caryl Buck  
Marcia Buffington  
Laura M. Bullock  
Bulrush STL Restaurant  
Jeff Bump  
Laurie Bunker  
Kathy M. Buono  
Calvin & Melodie Burger  
Rebecca Burgess  
Deta G. Calkin  
Catherine R. Camp  
Phil W. Campbell  
Sarah Campbell  
Terry Emerson Cannon  
Anngelique Canty  
Cynthia Capers  
Carolina Marsh Tacky  
Association  
Kim Carr  
Carrie Balkcom  
John F. Carroll &  
Chad Wegener  
Chris Carson  
Heather Carter  
Gary Cattell  
Leon Chaney  
John Chastain  
Annette Chavez  
Chick N Stuff Farm  
Jordan Choquette  
John & Jacquelyn Chotkowski  
Linda Ruth Church  
William Smiley Churchill  
Joseph Clark  
Melissa Clark  
Katherine Wolf & Peter Clark  
Emma Clayton  
Joan Clemons  
Ronald R. Cline  
Shannon Idell Cobb

*"As a foodie, I support The Livestock Conservancy because they promote the importance of varied food options for today and tomorrow." ~ Sonja Solomonson, a longtime member raising heritage chickens, geese, and turkeys at her family farm in Mason City, Illinois*







### MEMBER SPOTLIGHT - MARK CODY

*"Last year, around Christmas, my sons and I were sitting on the Gator seat in our shed that, when I was a kid, was my grandfather's hog barn. When my wife and I bought the place we turned the old barn into a workshop. I removed an old hog drinker off a pole outside and hung it up in the rafters. My youngest son spotted the drinker and asked what it was. Dads*

*love to tell stories of their youth to their kids and this gave me the opportunity to tell my boys about hogs on Hog Hill when I was a boy.*

*We live in the foothills of the Blue Ridge Mountains in Catawba County, North Carolina. The community in which we live is known as Hog Hill. Back a hundred years ago, folks brought their hogs to free range on Hog Hill in the spring and returned for them in the fall. This annual ritual is how Hog Hill got it's name.*

*When I was a kid every backyard had an A-framed hog hut with a hog or two running around. Today the backyard hog is hard to find. That day on the Gator seat, a proud dad and two boys decided it was time to put hogs back on Hog Hill and preserve the heritage of our community.*

*We were able to find our first litter of piglets at a small farm just 15 miles from here. We were confused, however, with the shape of their feet. When we asked the old guy what was wrong with them he said, 'Nothing, the boar is a Mulefoot.'*

*After checking out his boar we became fascinated with the Mulefoot breed. Then, after discovering it was included on the critically endangered list, we knew we were going to make Hog Hill Heritage a double preservation effort. We were not only going to preserve the heritage of Hog Hill, but also a heritage breed called the Mulefoot."*

Claudia Cocco  
Katherine O. Cole  
Peter & Tabitha Cole  
Danielle & Jakobh Coleman  
Shirley Jackson Collins  
Denise Colombe-Frye  
Kris Colt  
Ken Smith  
Wally Congdon  
Martin Conrey  
Drew & Janet Conroy  
Calvin J. Cook  
John A. Cook  
Darla J. Cooper  
Joan Cooper  
Karen Cooper  
Cydney Louise Cornell  
John T. Cors  
Cotswold Breeders  
Association  
Malissa Coy  
Andrew & Valerie Criswell  
Crystal Criswell  
Liorah Crockett &  
Marc Biggins  
Douglas M. Crosby

Tom & Amy E. Crow  
Gordon C. Cucullu  
Maryellen & Bruce Cudney  
Ruth Culbertson  
Andrea Janel Cull  
Keith R. & Linda Cunningham  
Sam Cunningham  
Rhyne Cureton  
Carolann E. Curry  
Leslie Daigle  
Robert E. Dannels Farm  
Heritage Project  
Margaret L. M. Darby  
Bailey G. Davis  
Cynthia Davis  
Debbie & Don Davis  
Reba Davis  
Richard Davis &  
Christopher Vazquez  
Myndi Dawes  
Sherri & Hardy Dawkins  
Nancy de Caprariis  
Barbara De Mare  
Tracee Dean  
Neil K. DeBuse  
Patty Dees

Nicole Delma  
Brian J. Denman  
Ruth Dennis  
Alaine Depner  
Marianne DePoy  
Jean Desrochers  
Bill & Jane Devlin  
Caitlin DiDomenico  
Robert D. Dike  
Thomas J. Dinwoodie  
Adam Dixon  
Max J. Dobles  
Kathleen Doenz  
Dawn Dolan  
Stephanie Doll  
Anne L. Donnelly  
Gerald Donnelly  
Kathy Donovan  
Patti Dougherty  
Casey Dowell  
Janet Dowell  
Karla Drewsen  
Lindsey Drought  
Kenneth H. Dubke  
Drew Duckworth  
Katherine Duclos

Paula J. Duenkel  
Paige Duncan  
William Dunlap  
Barbara Jayne Dunn  
Jacqueline Duran  
Larry Duvall  
Laura Duvelius  
Laura M. Easter  
Mike Eastman  
Anna Eberly  
Bruce Eckholm  
Andrew Ehret  
E. Fred Elledge  
Kevin Ely  
Rebecca Ann Englerth  
Teri English  
Donald David Entenman  
Jordin & Christy Erb  
Margarette L. Erdman  
Todd Evans  
Wendell Evans  
Lori Evesque &  
Pete Robertson  
Exelon Foundation  
Lisa Fall  
John S. Fant



# MEMBERS & SUPPORTERS

## \$100 - \$249 CONTINUED

Farms & Barns Real Estate  
James & Debby Farr  
Laura Farrell  
Jennifer Farrington  
Gary & Dawn Felger  
Allen Fertuna &  
Tommy Bentley  
Brenda Fickenscher  
Laurel Field  
Linda C. Fietz  
Sherry Fillman  
Glenn Finch  
Stephen M. Finnemore  
Randy & Brenda Fischer  
Charles & Ellen Fitzpatrick  
Bob FitzSimmonds  
Leah Fleming  
Florida Cracker Sheep  
Association  
Maria Floyd  
Amy Folwick  
Charlotte C. Ford  
Patricia Foreman  
John Forintos  
Vito Forte  
W. T. Francisco  
Grace Frank  
Sam Frank  
Sheri Lynn Franz  
Gretchen Frederick  
Thomas Freedman  
Karen Ann Freitas  
Jameson S. French  
Rebecca Fretty  
Friends of the Heritage Horse  
Foundation Herds  
James C. Frisch  
Christine Frund  
Teri Fuller-O'Brien &  
Dana Goodman  
Jo Galle  
Beth Gallo

Garfield Farm Museum  
Margaret Garland  
Katherine Garrett  
Connie Garry  
Samantha Garwin  
Susan S. Gaston  
Emily Gates  
Evie Gates  
Kahla Gentry  
Zachary Gerbozy  
Pippa Gibbons  
Carla Gibson  
Jennifer Gibson  
Colin Giffen  
David J. Gilbank  
Gene Gilbert  
Sal Gilbertie  
Richardson B. Gill  
Terry L. Gill  
Caryn Ginsberg &  
Michael Levitin  
Robert M. Gold  
Antje Gole  
Rachel Gollub  
Ernesto F. Gonzalez  
Carla Gosline  
Gotlandruss Pony  
Preservation Society  
Kathleen Graham Blue  
Gabrielle Gratton  
Kristen Green  
Nathaniel B. Greene, Jr.  
Carla R. Gregory  
Vincent & Vickie Gresham  
Mark Whitfield Griffith  
Bob & Susan Grimm  
Harry & Gail Groot  
Linda J. Gross  
Thomas H. Groth  
Kay Emily Gschwind  
Sandra & Rob Guidi  
Julie Guilette  
Julie & Barry Gupton

Rebecca Gutierrez  
Nina Haas  
Cinda Haderlie  
John Haftek, Jr.  
Carr Hagerman  
Sam & Amy Hainer  
Christine M. Halbur  
Nancy Hales  
Kimberly Haling  
Claudia Hall  
Ted W. Hall & Chris Hall  
Patrice Hallock  
Kelly E. & Robin L. Hamm  
Karl Hammer  
Dorothy Hammett  
Suzanne H. Hampton  
Patrick J. Handrick  
Martha Hanks-Nicoll  
Gregory Hannan  
Sussie Hansen  
Kendall & Anne Harris  
Laurie Harris  
Josh Harrison  
Steven Hart  
Robert Hawes  
Sue Haycock  
Douglas Hayes  
Kathleen Hayes  
Linda Hayes  
Loretta Heath  
Matthew Hecht  
Charles F. Heidgen  
Rosemary Helms  
Alex Henderson  
Janet M. Henkel  
Joyce Herman  
Denise Herrin  
Robert Hershey  
Mark L. Hess  
Edward Stephen Higgins  
Lee Hill  
William E. Hine, Jr.  
Jason Hirsch

Ronald G. Hodson  
Steven J. Hoffman  
Gail Hollabaugh  
Suzanne Alicia Holland  
Nathan T. Hollinger  
Andrea Holmes  
Aaron & Mary Honeycutt  
Joyce Honour  
Fred & Joan Horak  
Patrick Horan  
John & Teresa Horger  
Horse of the Americas  
George Houssels  
Miranda Howard  
Barbara D. Howell  
Terrence M. Howell  
Suzanne E. Huber  
Claude Hughes  
Liz Strauss & Mark Hughes  
Robert Hughes  
Brett Hunnicutt  
Nancy Irlbeck  
Gina Irons  
Sheila M. Isham  
Beth Ivankovic  
Fred & Mary Jackson  
J. Carice Jameson  
Laurel Warg Jamieson  
Jean Alexander & Ronald Rice  
Melissa Jennings  
Donald F. Jenny  
Lane Jensen  
Lisa Jensen  
Angela Johnson  
Christine A. Johnson  
Jon & Cathy Johnson  
Karen Rae Johnson  
Leroy Johnson  
Susan Johnson  
Karen S. Johnston  
Randy Jones  
Lisbeth Jorgensen  
Lourdes Julien  
Kyle & Michelle Just  
Theresa Kaiser  
Cami Kanner  
Gregory Alan Kaplan  
Michael Karaszewski  
Andrea Kasper  
Nancy Landon Kassebaum  
David B. Kauffman  
Christopher P. Keefe  
Shannon Keil  
Keith & Linda Conover  
Elizabeth Kelleher  
Carol A. Kellish



*"We use our farm animals to highlight Florida's rich agricultural heritage to the youth in our area. We especially enjoy our Royal Palm turkeys because they were developed in the 1920s by Enoch Carson in Lake Worth, a town 20 miles to the south of us." ~ Ben Schuemann of Schuemann Farm in Indiantown, Florida*

# LIVESTOCK CONSERVANCY LIFE MEMBERS

Anonymous (2)  
Debbie Adams  
Leticia A. Alamia  
American Mammoth  
Jackstock Association  
Julie Atwood  
Jared & Amanda Baldwin  
Linda D. Barta  
Gloria Basse  
Charles & Maryann Bassett  
F. James Becher, Jr.  
Brandon Berry  
Kristina Bielenberg  
Donald & Patricia Bixby  
Warwick P. Bonsal  
Paul Bradshaw  
I. Lehr Brisbin  
Alice Britenbaker  
Samuel J. Brungardt  
Corinna Bryant  
Carol J. Collins  
Liz Crain  
Emily Davidson  
David & Brenda Day  
Lisa L. Douglas  
Kelli Dunaj  
Mark & MaLea Easterly  
Jill Eaton  
Bradley P. Edin  
Mary Margaret F. Edwards  
Geoff Eldringhoff  
Mary Ellenberger  
Karena Elliott  
Jan French  
Amy P. Goldman Foundation  
Lou & Kelly Gonda  
Elizabeth P. Gordon  
Gabrielle Gordon  
George Washington's  
Mount Vernon  
Mariel R. Goss  
Temple Grandin  
Barbara Grasseschi &  
Tony Crabb  
Elyse Marie Grasso  
Lisa & Stephen Grubb  
John Haftek, Jr.

Hamilton Rare Breeds  
Foundation / Pat Hastings  
Jessica Hart & Kenneth Moore  
Matt Hemmer  
David & Millie Holderread  
David Holmgren  
Ann Huebner-Waller  
Matthew Hunker  
Ideal Poultry Breeding  
Farms, Inc.  
Elizabeth D. Jeffords  
JPR Acres, LLC  
Michael T. Kovack  
Dennis V. Lange  
Brian Larson &  
Jennifer Garrett  
Carolyn T. Larson  
Charles & Jacquetta Lewis  
Live Laugh Love Life -  
The Carly Imbierowicz  
Foundation  
Ed Lomont  
David & Heather Loomis  
Patricia Lusted  
Nick & Lisa Lynn  
Jacqueline Badger Mars  
JoAnn C. McCall  
Mary Carter McConnell  
Ken & Oogie McGuire  
Linda H. McKittrick  
Patrick L. McNally  
Lyle G. McNeal  
Sally McVeigh  
Sue Meyer & Mike Hansen  
Robyn & Robert M. Metcalfe  
John and Sharon Metzger  
Cheryl Miller  
Marie & Stephen Minnich  
Jane Moran  
Douglas A. Nunn  
Byron Olson  
The Onota Foundation  
Mike Palmer & Sue McAlister  
Michael Anthony &  
Autumn Elizabeth Pena  
David E. Pepe  
Nathan Peters  
Bruce & Marge Petesch  
Frank R. Reese  
Jim Reichardt  
John Rogers  
The Rose Family  
James Rouchon  
Nicole & Dan Salvato  
Susan Hope Schaberg  
Christa B. Schmidt

*"I have been breeding and raising original Texas Longhorn cattle since 2017. They are a breed that's easy to raise, intelligent, great mothers, disease and drought-resistant, with awesome twisty horns. Their historical significance to Texas and our nation also really resonates with me. I very much appreciate The Livestock Conservancy's dedication to endangered heritage breeds." ~ Debbie Adams, Cielito Lindo Ranch in Wimberley, Texas*



Shelley Schorsch  
Don Shadow  
Linda L. Sherrill  
Ridgway F. Shinn III  
Kerry W. & Kristen Skelton  
P. Allen Smith  
Kyle Sonnenberg  
Sydney L. Sparkes  
Julianne S. Spears  
David W. Sperling  
Katherine Sproull  
Marion & Vi Stanley  
Ann Staples  
Lisa Steele  
Michael & Kay Strauss  
Heidi Stucki & Philip Larson  
Marcia V. Stucki  
Charles Taft

Phyllis Taylor  
Mae Ellen E. Terrebonne  
Dugan Tillman-Brown  
Robert Tomas  
Jason Turner  
Therry Vargas &  
Lindsey Koob  
John & Leslie Wheelock  
Angela White  
Mickey Willenbring  
Ron Wilson  
Terry & Judy Wollen  
Lucien (Bud) Wood  
William J. Woods  
Kayla Wright  
Melissa Wubben





*"I love meeting new people getting started in the Silver Fox breed. I make sure to mention The Livestock Conservancy and the importance of preserving genetic diversity. Without a microgrant to improve my rabbitry infrastructure and to acquire new genetics, I would not be where I am today." ~ Ashley Pierce, Livestock Educator for Cornell Cooperative Extension in New York and 2019 Microgrant Recipient*



#### **\$100 - \$249 CONTINUED**

Eileen Kelly  
David J. Kendall  
Richard Kendall  
William Kennedy  
Suzanne Kennedy-Stoskopf  
Terry Keown  
Cindra A. Kerscher  
Jamie Kidwell  
Karen Kight  
Douglas & Cynthia Kirk  
David Kirschten  
Phyllis Kitchens  
Karen Kitt  
Eileen Klein  
Henry Kluttz  
Sarah Knife  
Caroline Knight  
Rich & Linda Kolehmainen  
Thomas Korosec  
Marianne Kramer  
Felicia Krock  
Sheila Nottingham Kulbeth  
Konrad & Lesley Kuzmanoff  
Robert & Joy Kwapien  
Wayne Kyle  
Christine Lafferman  
Lanora LaPrath  
Harold F. Larsen  
Stallworth McGowin Larson  
Jim & Kristan Latham  
Jo Ann Laughlin  
William T. Lawhon  
Nanette Leaman  
Cyrille LeBlanc  
Agnes M. Lee  
Tracy LeGrand  
Caroline S. Lewis  
Ashley & Lynn Lindstedt  
Lynila D. Lindstrom  
Floyd Lipe  
Little Rock Zoo  
Linda Liu

Steven Loe  
Helga Loncosky  
Rocky & Michele Long  
Amber Lea Lopez  
Allison & Paul Loubert  
Timothy R. Lucas  
Ken Lukaszewski & Family  
Nick & Lisa Lynn  
Lauren & Michael Lyons  
Ben E. Machin &  
Grace Bowmer  
Barbara Madley  
Allan Maguire  
Rebecca C. Mahoney  
Jeanne Main  
Joanne Maki  
Terry & Kristin Mansfield  
Donna Marietta  
Margaret Wile Marsh  
Mark & Shannon Martin  
Timothy Martin  
William C. Mast  
Kimberly & Jack Mastrianni  
Deborah S. Mattix  
Richard A. Matz  
Lynn L. McAdams  
Joseph McBlee Jordan  
Kevin McCaffery  
Robert McClelland, Jr.  
Kelsey McCollum  
Wendy Lea McDaniel  
Waverly McFarland  
Scott & Lydia McGhee  
Geri McGibney  
Jane H. McGraw  
Mary Ann McInnis  
Jessica McLean  
William R. McNeal, Jr.  
Memphis Zoological Society  
Harry W. Meredith Jr.  
Melissa Merrill  
Lisa Messenger  
Charlotte S. Metcalf

William Mettler  
John C. & Judith Metzgar  
Leroy F. & Rose Meyer  
Emily Kim Miller  
Zen Miller  
Mindy B. Mills  
Stephanie Lynn Mills  
Kayla Mitchell  
Suzanne Mohler  
Duane Mohr  
Lynn and Jim Moody  
Cynthia Moore  
Donna Moore  
Edward Moore  
Rachel & Claudia Moore  
Ty Morgan  
Esha Mork  
Audrey Morris  
Audrey Morris  
David & Diane Morris  
Ruth E. Morris  
Robert & Kathryn Morrow  
Susan Moss  
Robert Mueller  
Timothy Mulcahy  
Maria Muscarella  
Dale Muter  
Susan Myers  
Janette Neal-Zopp  
Deborah Nelson  
Lynn Nelson  
Newhall Farms  
Edmund & Elizabeth Newton  
Carl & Lu Ann Nichols  
Pam Nichols  
Eufren Ninancuro-Ramos  
Cynthia Nordstrom  
Cathy Norris  
North American Shetland  
Sheepbreeders Association  
Northern Flights Farm  
Nancy Nunn  
Doris Ober

Libby O'Connell  
Pamela Odum  
Jo Ellen Ohayon  
Romualdo Olazabal  
Debra Olive  
Mickey Ollson  
Mary M. Olsen  
Cheryl Orcutt  
Robert Warren Orr, Jr.  
Monica Oss  
Neil P. O'Sullivan  
Caitlin O'Toole  
Cassandra Ott  
Manuel Ovando  
Alison Pacuska  
Nancy Page  
Alan Paine  
Steven D. Palosaari  
Will & Louise Pape  
Michael F. Pappalardo  
Jody C. Patilla  
Drake Patten  
Henry & Vanessa Patterson  
Rachel Patterson  
Joseph E. Pattison  
Charlotte Pavelko  
Cathy R. Payne  
Lisa Payne  
Allie Peet  
Rebecca Pennington  
David E. Pepe  
Elizabeth Perkins-Behun  
Sara Perrott  
Lance E. Perryman  
Eleanor W. Petersen  
Adair Chambers Peterson  
Janet Lee Pflederer  
Anna J. J. Phillips  
Cathy Phillips  
Reid L. Phillips  
Robert C. Pierson III  
Pitman Farms, Inc.  
Carlton Pittman

Harriet Carter Pittman	Barbara L. Rosholdt	Ed & Kathy Shaw	Heather Steel
Edward & Melanie Plantaric	Amanda Ruark	Thomas Shaw	Jesse Steinke
Lee E. Poleske	Marisa G. Rubino	Tom & Mary Lou Shaw	Jennifer Stengel
David Porter	Mary Z. Ruby	Lindsay Shea	Patricia Stevens
Janet Marie Potter	Stuart Ruch	Tanya Charter & Greg Shore	Russell & Maxine Stewart
Robert Price	Helen Russell	Craig Shuba	Naomi Stickney
Bob & Sandy Priscott	Marc Russell & Amanda Lacey	Becky Shumway	Mac Stone
Andrew Puckett	Karen & Bob Rutherford	Carol Siegel	Regina Stottlemeyer
Rosa Puech	Lila Ryan	Paul Siegel	Muriel Strand
Beverly J. Purswell	Tim Safranski	Katharine Silvasi	John R. & Elizabeth Stratton
Lisa Quilty	Jeff R. Sage	James Neal Simms	Nef Straub
Lisa Raedler	Kelvin Sanders	Nancy Simon	Michael & Kay Strauss
Jeffrey Ramaker	Paul Sanner	Kellie Sims	Sally Strickler
Lynn Razaitis	Sara Santos	Minna White & Bob Slattery	James Strother
Stacy Reddy	Savannah Community	Nan E. Slingerland &	Elizabeth B. Strub
Bets Reedy	Foundation / Guerry	Karen Mott	Ross W. Stuedemann
Richard & Gretchen Regnery	Beam Fund	Dennis & Teresa Smart	Susan J. Suber
Christy Reich	George Sawyer	Rich Smelser	Daniel Sullivan
Walt Reichert	Linda Sax	Betty Elaine Smith	Sherri & Henry Talbot
Jeff Reifsteck	Elizabeth Schaffner	Blake Smith	Kristin Taylor
Kathy & Margaret Reiland	Barbara Scheer	Hannah Smith	Sidney Calvin Teague, II
Robert Reilly	Jim Schepmoes	Harold D. Smith II	John Telepo
Wayne Reinhard	Martin L. Schlabach	Linda E. Smith	Teucrim Trading, LLC
Ross Reinhiller	Whitney Schlegel	Piper Smith	Chuck & Catherine Thode
Dale O. Reinke	W. J. Schlitt, III	Suzanne Smith	Jerry Thomas
Deborah J. Remer	Joan Schnieber	Elizabeth Smithwick	Jason P. Thompson
Shannon Rexrode	Gerald Schoenfeld	Meagan Sneeringer	Charles H. Jr. &
Randolph Reynolds	Jane G. Schoneman	Laurel Snook	Christina Thurber
Don & Sandra Richards	Patricia Schooley	Leland A. Snyder	Robert Tomas
Earl P. Richards	Saskia Schott	Michael Mark Soltis	Kelvin Smith Tomlinson
Erik Richardson	Donald L. Schupp Jr	Kevin Sonney	Merle A. & Nancy Tooker
Walter & Susan Richter	John C. Schwartzler	Spanish Barb Horse	Traditional Morgan Horse
Henry E. Rodegerdts	Eva Schweber	Association	John P. Travis
Kaleb Dee Rodgers	Anne Marie H. Scrivener	Sydney L. Sparkes	Frank S. Tremel
Rick & Nancy Rodgers	Cynthia Seaman	Marcia Sparling	John E. Truelson
Gilbert Hugh Rogers	David Sears	William Speiden	John Turnberg
Pamela Rogers	Michael N. Sears	John & Margrete Spencer	U Penn Swine Center
Matt Rolleston	Jill Sebra	Steven P. Spencer	U.S. Belted Galloway Society
F.S. Rolon	Andrea Seifert	Amy Spomer	Catherine L. Ullman
Mark J. Rolves	Lindy Seip & Robert Zemetra	Larry Spomer	Royal & Sue D. Unzicker
American Association	Steve Seltzer	Kate Sproul	Lynne Updegrove
of Zoo Keepers	Mark Seymour	Christine Staffa	Kim E. Upper
Bernard A. Rosenberg	Julie A. Shaffer	Tim Stanley	Sarah Usandizaga

*"When my husband and I decided to start a farm a few years ago, we agreed right away that we wanted to preserve heritage breeds. While researching, we came across The Livestock Conservancy and were thrilled to find a community of people with the same goals. The #1 reason we chose Welsh Harlequins was for their auto-sexing trait; it's so convenient knowing right away how to separate our grow-outs. We also wanted a strong egg-laying breed, and these ladies do not disappoint - they lay a LOT. They're incredibly friendly and excellent foragers, too!"*  
~ Jess Hart, JK Herd It All Homestead in Mishicot, Wisconsin





**\$100 - \$249 CONTINUED**

Peter Vamvakias  
 Andrea Van der Wel  
 Patricia Vanable  
 Michael Vasquez  
 Gary A. Via  
 Megan von Feldt  
 Joy von Wolffersdorff  
 Laura Vrana  
 Richard Wakefield  
 Charles Waldren  
 Brenna Walker  
 Robin Walker  
 Kim Wall  
 Mark George Wall  
 Sara & Josh Wall  
 Tom & Connie Walsh  
 Karen J. Wanek  
 Julie M. Wasser  
 Scott & Heidi Wassermann  
 Lisa Waterman  
 Dee Waters  
 David & Deborah Watson  
 Karen Watson  
 Theresa Watson  
 Jim Weaver  
 Jeff & Karen Weesner  
 Brent Weisman &  
   Barbara Cloud-Weisman  
 Michael R. Welch  
 Richard Welch  
 Sylvia Wendell  
 Lynda West  
 Bill Westerhaus  
 John Westra  
 Kira Weyrauch  
 Lisa A. Whalen  
 Sarah Whalen  
 George Whipple  
 Bonnie White  
 Jimmie White  
 Ann & David Whitehouse  
 Elizabeth Whitley  
 John G. & Virginia Whitman  
 Molly Wight  
 Stephany Wilkes  
 Kelli Wilkinson  
 Marilee Williams  
 MaryLou Williams  
 Sophia Williams  
 Brian Willsey  
 Pamela Willson  
 Valerie Wilmot  
 Dexter D. Wilson  
 Eileen Wilson  
 Lonnie Rodriguez &  
   Paula Wilson  
 Philip Wise  
 Wendy Wojda  
 Gene Hiibner & Darren Wold

James Wold  
 Cheri Wolfe  
 Robert & Charlotte P. Wolfe  
 World Heritage  
   Yak Conservancy  
 Bob Wrable  
 Carol Sue Wurzberger  
 William & Wendy Wustenberg  
 Madeleine Yeh  
 Kara Zaks  
 Jane Zeien  
 Renee Zimmerman  
 David Zimrin  
 Joel K. Zink  
 Yvonne Zweede-Tucker

**\$25 - \$99**

Paula Aarons  
 Cynthia Abbott  
 Harry & Connie Abeln  
 Accokeek Foundation  
 A. Dale Ackels  
 Roberta Actor  
 Carey Ann Adamiec  
 Daniella & James Adams  
 Dean & Becky Adams  
 Kimberly D. Adams  
 Laurie Brooke Adams  
 Perri Adams  
 Sara Addieg  
 Kristen Addison  
 Gene Addy  
 Nadja K. M. Adolf  
 Pam & Tom Aeillo  
 Luiz Ahumada  
 Montana & Carol Airey  
 Fumihito Akishinonomiya  
 Alabama Agricultural  
   Museum  
 Norris Albaugh  
 Don Albrecht  
 Sue Albrecht  
 Cheryl Alderese  
 Bruce & Margaret  
   Alexander  
 Lindsay Alexander  
 Anna Alfonso  
 Timothy Algeo  
 LB Allen  
 Monica Allen  
 Nell Allen  
 Pam Allgood  
 Julia Allison  
 Rebecca Almy  
 Herman John Altmann  
 Sara Amelse  
 American Belgian  
   Hare Club  
 American Buttercup Club  
 American Romeldale/

CVM Association  
 American Teeswater  
   Sheep Association  
 Sharon Lynn Amick  
 Lana Anders  
 Robin Anders  
 Alison Anderson  
 Brenda Anderson  
 Carrie Anderson  
 Gary & Dianne Anderson  
 Gayle & Kathy Anderson  
 Julie Anderson  
 Robert Anderson  
 Joanne Andrew  
 Bianca Andrews  
 Gloria Andrews  
 Lisa & Maddie Andrews  
 Tina Andros  
 Lisa Anglin  
 Sara Ani  
 Rebecca Antecki  
 John Antill  
 Vania Apps  
 Frances Aprile  
 Beth Arcand  
 Michele Arceneaux  
 William Arias  
 Alice Armen  
 Michelle Armogida  
 Shawn Marie Arnold  
 Rebecca Armstrong  
 Jodi Arndt  
 Michele Arnold  
 Michelle Arthur  
 Muriel T. Asbornsen  
 Elaine Ashcraft  
 Paisley S. Ashland  
 Paula Ashworth  
 Aimee Assur  
 Jennifer Attanasi  
 Dianne Atwood  
 Meaghan Audet  
 Kathleen Auer  
 Aullwood Audubon  
   Center and Farm  
 Lindsey Maddox Austin  
 Celeste Auvil  
 Robert L. & Ann A. Ayer  
 Levi & Shyla Ayers  
 Cheryl Babik  
 Samuel Babineaux  
 Annette Baca  
 Louis & Kathy Bach  
 Jessica Bachant  
 Jessica Backus  
 Melissa & Tom Backus  
 Lois Ann Bailey  
 Douglas & Landa Bailly  
 Jane Baker  
 Karen Baker

Monica Baker  
 Nancy C. Baker  
 Penelope Baker  
 Debbie Baker-Snavely  
 James Baldwin  
 Natalie Balents  
 The Baljeu Family  
 Mary Balk  
 Amy & Daniel Balog  
 Jenny Baltzley  
 Laura Bapp  
 Caroline Baptist  
 Lee Barber &  
   Carla Luiza Calvi  
 Robin Barbera  
 Bonnie J. Barcus  
 Mary Bare  
 Becky Barlow  
 Amy Barnes  
 Shelly Barnes  
 Patricia Barnes-Svarney  
 Anne Barnhart  
 Rhiannon Barreda  
 Kate Barrett  
 Shelley Barron  
 Steven & Patricia Barrows  
 Brent Barry & Susan Cox  
 Kelly Kay Bartels  
 Kelly Bartlett  
 Margaret Bartlett  
 Roxana Bartlett  
 Jeannette Bashore  
 Sarah Batz  
 Philip J. Bauble  
 Sandra Baysinger  
 Lewis & Sarah  
   Beard-Franklin  
 Jane Beal  
 Susanna Beals  
 Sarah Beamer  
 Guadalupe Beanway  
 Billy Beasley  
 Ricky & Carolyn Beasley  
 Jane Beauchamp  
 Kevin Beaulieu  
 Marion C. Beausoleil  
 Kerrie Beckett  
 Gina Beckman  
 Philip & Claudia Beckwith  
 Josh Beeman  
 Matthew Beemer  
 Jerry Beets  
 Lyle & Donna Behl  
 Maria Belan-Crawford  
 Kimberley Beldam  
 Blake Bell  
 Linda Bell  
 Velma K. Bell  
 Anna Belt  
 David Bender

*"Raising Poitou donkeys is extremely difficult and expensive. Our partnership with The Livestock Conservancy is moving the needle in a positive direction for this beautiful breed. Together, we're tackling unique genetic challenges and working on setting new breed stewards up in the best possible way. We could not do it alone.*

***Together we can make a big difference!"***

Patrick Archer, Texas Poitou Donkeys



*Watch this newborn foal  
learn to steady his legs.*



Patrick Archer hugs hours-old Poitou foal Legend. Photo by Brittany Sweeney





## USPS HERITAGE BREED FOREVER STAMPS

The hard work of those saving heritage breed livestock and poultry from extinction was honored with a United States Postal Service Forever Stamp. The special stamp collection features 10 breeds that played important roles in American history. The majority of the breeds are only found in North America, and are adopted to fill unique agricultural niches.

"These stamps pay tribute to heritage breeds, pre-industrial farm animals that are enjoying renewed attention for their versatility, adaptability, and unique genetic traits. Heritage breeds of livestock take us back to our agricultural roots - and show the way to a more sustainable future," according to the US Postal Service.

The Livestock Conservancy celebrated the release of Heritage Breed Forever Stamps during the First Day of Issue Ceremony held in May 2021 at George Washington's Mount Vernon. Festivities included representatives of each of the 10 breeds from the stamps and speeches from Executive Director Alison Martin and Senior Program Manager Jeannette Beranger. The breeds on the stamps were picked by Technical Advisor D. Phillip Sponenberg, DVM, Ph.D. Zack Bryant designed the stamps with photographs by member Aliza Eliazarov. Thank you to longtime Livestock Conservancy Member Jody Jess for nominating heritage breeds for a stamp collection. And thank you to everyone who traveled to participate in this once-in-a-lifetime event!



Watch the recorded livestream of the First Day of Issue Ceremony. USPS Strategic Communications Business Partner Twana Barber kisses a San Clemente Island goat kid. Photo by Brittany Sweeney.

The Heritage Breed Stamps were so popular they were nominated as the Overall Favorite Stamp of the Year (2021) by the *Linn's Stamps News Stamp Popularity Poll*.

**\$25 - \$99 CONTINUED**

Charles W. Benhoff  
Peter Berezuk  
Stephen P. Berg  
Karin Bergener  
Jesse Berger  
Larry R. Bergman  
Michelle Bernard  
Deidre Berry  
David Berryhill  
Adrian Bickley  
Dawna Bicknell Tanner  
Amy Biddle  
Stephanie Bidwell  
Kathy Bierkens  
William F. Biery, Jr.  
William W. Biggers  
Tamara Bills  
Al Bingham  
Deena Bingham  
Dan Bird  
Mary Bird  
Matt Birdwhistell  
Darryl Birkenfeld &  
Joann Starr  
Julie Biron  
Kimber R. Bishop  
Lynne Bishop  
Scott Bitoff  
Paula Bittinger  
Cynthia Bixby  
Linda Bjarkman  
Dennis Black  
Richard & Linda Blackman  
Connie Blair  
Starr Blanchard  
Michael C. Blanco  
Beverly Blaylock  
Peg Blechman  
Jean Block  
Pat K. Block  
Adam Bloomston  
Chris & Sarena Blotter  
James Blount  
Blue Ridge Institute  
& Museum  
Robin Rudd Bobrick  
Ted Bochenek  
Lisa Bockelman  
Victoria Boehmer  
Dylan Boeken  
Cynthia Boettger  
Judi Bogardus  
Joseph R. Bohr &  
Peg Bostwick  
Larry Bonds  
Michael Bonham Jr  
Scott Bontz  
Booker T. Washington  
National Monument

John Boone  
Peggy Boone  
Heather Boright  
Janene Borini  
Lyle Borody  
Bill & Kathy Bottorff  
Leslie Boucher  
Susan Wise Bouer  
Krystyn Z. & Nigel Bourne  
Randolph H. Boutwell  
Jami Bova  
Jerry Lee Bowe  
Joanne Bowen  
Matthew J. Bowen  
Beverly Bower  
Laura & Steve Bowers  
Mary Beth Bowles  
Jamie B. Bowman  
Tami Bowser  
James R. Bowsher  
Kristin Boyd  
Patricia M. Boynton  
Pat Brabazon  
Maria Bracke  
Megan Brackett  
Crystal Bradbury  
Givan Bradley  
Christine Brady  
Mary Bragg  
Germaine Bragonier  
Angela Branson  
Laurie Branson  
Kelley Brautigam  
Mary Brazier  
Aby Breed  
Rachel Breeden  
Margaret Breen  
Joseph P. Breier  
James Bremner  
Corliss Brewer  
James T. Bridges, Jr.  
Gailen & Debra Bridges  
Freddie Brinson  
Kimberly Briscoe McBride  
Kathleen Briscoe  
Alice Britenbaker  
Laura Brittingham  
Diana Britton  
Karen E. Broadway  
Ron Brooks  
Maia Broussard  
Holly Browder  
Alan & Marie Brown  
Amy Brown  
Billy Brown  
Janice Brown  
Jeffery Brown  
Jess Brown  
Joshua & Lesdy Brown  
Kathren Brown

Kelli Brown  
Michael Brown  
Richard G. Brown  
Samantha Brown  
Steven J. Hoffman  
Vernon Brown  
Alexandria Brown-  
Haglund  
Jane Robin Bruins  
Emily Brulloths  
Carol Brunette  
Robert G. Bruning  
Sandra Bruno  
Roger Brush  
Brenda Bruton  
Alton Bryant  
Cynikah Bryant  
Karen Bryant  
Jamie Bryson  
Logan Buchanan  
Mike & Patrice Buck  
Brandon Buerge  
John Buffington  
Eryn Bugenhagen  
Kenneth Bullard  
Michael E. Bullard  
Alice Bulson  
Sue Bundy  
Pamela Bunyea  
Judith Ann Burg  
Julie Burger  
Beauregard Burgess  
David & Mary Burgett  
Anne J. Burke  
Jill Burks  
Alicia Burlington  
Kathleen Burmania  
Kurt Burnham  
Andrew J. Burns  
Cody & Kimberly Burns  
Deborah Burns  
Judy Burns  
Michele Burns  
Stephen Craig Burton  
Angela Burwick  
Brittany Cole Bush  
Larry A. Buster  
Nada Jill Butler  
Dorothy Butler-Landes  
Diana Byrd  
Christopher Caceres  
Audrey J. Cadle  
Robin Cael  
Matthew Caley  
Kelly Callaghan  
Colleen Callahan  
Hannah R Callahan  
Holly Callahan-Kasmala  
Christy Cameron  
Marguerite Cameron

Tara Campau  
Corrin Campbell  
Justin Campbell  
Sarah Campbell  
Anne Camper  
Denisse Cancel  
Danielle Cantrell  
Michael Cantu  
Sarah Caputo  
Brandy Cardarelli  
Duv Cardenas  
Victoria Cargill  
Carol Carlson  
Donna Carlucci  
Drake Carnahan  
Deborah J. Carnes  
Thomas & Beverly Carnes  
Cahli Carothers  
Alaina Carpenter  
Elena Carpenter  
Lisa Carpenter  
Nedra Carpenter  
Sue Ann Carpenter  
Gwen Carr  
Darla Carroll  
Gigi Carroll  
Kim Kathryn Carson  
Leah Casady  
Julie Case  
Linda Casey  
Amy Castro  
Catalent  
Tanya Cauthen  
Jackie Cavallin &  
Steve Acuff  
Ed Cavanagh  
Kathleen Ceravone  
Andrew Cerrato  
Shuna Cerrato  
Angela M. Chamberlain  
Christopher Chambers  
Jeff Chambers  
Kaitlyn Chambers  
Emily Chamelin  
Donna Chandler  
Joel & Linda Chapin  
J. Chapoton  
Nancy Charest  
Sandy Chatelle  
Anne Checchia  
Marilyn R. Cheeseman  
Kathryn Cheever  
Joseph Chelar  
Debby Cheney  
Amber Cherise  
Sally Cheston  
Iris Chinook  
Carlota Chmielewski  
Joanne Choomack  
Eric Alan Christensen



**\$25 - \$99 CONTINUED**

M. Claire Christian  
Sandra Christian  
Carolyn Christman &  
Ronnie Shehee  
Lyn Christoph  
Kristin Chuchwa  
Mark & Nicole Ciarrocca  
Greg S. Clark  
Houston Clark  
Jerry Clark  
Jorge Clark  
Katherine Clark  
Kristin Clark  
Mac Clark  
Rebecca Clark  
Stanley Clark  
Steven W. Clark  
Wendy K. Clark  
Jennifer Clarke  
Robert & Kim Clarke  
Adele Claussen  
Larry M. Claussen  
Lorriane &  
Rogers Clawson  
Meg Clawson  
Raederle Clay  
Mary Clayton  
Christopher Clem  
Deb Clemens  
Erik R. Cleveland  
Susan Clopton  
Gretchen Coates  
Terry Coburn  
Catherine A. Cody  
Mark Cody  
Elizabeth H. Coe  
Mary Coffey Strand  
Kristofer Coffman  
Lesli Cohen  
Yates Colby  
Brandon Cole  
Nancy Cole  
Beth Collier  
Catherine Collier  
Tanya Collier  
Jerry & Heidi Collings  
Robin Lea Collins  
Elizabeth Collins  
Lindsay Collins  
Michele A. Collins  
Nichole D. Collins  
Colonial Williamsburg Coach  
& Livestock Dept.  
Mary Jane Combs  
John Conklin  
Chris Conley  
Clyde & Marilyn Cook  
Cynthia A. Cook  
Daniel Cook

Dawn Cook  
Donna Cook  
Henry Thomas Cook  
Janice Cook  
Rhoby E. Cook  
Meghan Cooke  
Harry Cooksey, Jr.  
Paul Cooper  
Anjanette Cooper-  
Mitchell  
Donald A. Cope  
Brett Copeland  
David & Susan Corbin  
Joseph D. Cordell  
Dorothy Cordochorea  
Nan Cecile Cordy  
Samantha Corey  
James R. Corkern  
Corolla Wild Horse Fund  
Elizabeth Corrette  
Dawn Corrie  
Barbara E. Corson  
Sarah Costa  
Rebekkah Cote  
Emily Cotton  
James J. Countryman  
Dehan &  
Rebecca Courtney  
Mackenzie Covert  
Deborah Cowan  
Cynthia Cox  
Kathryn Cox  
Beth Craig  
Ross & Angela Cramer  
Bernie & Mary Ann Cripe  
Betsy Cromwell  
Pamela L. Cronk  
Jan Croot  
Darrell L. Croson  
Abigail Cross  
Deborah Crossman  
Max &  
Christine Crossman  
Miranda Crotsley  
Robert Crowley  
Carla Cruise  
Clarence A. Cruse  
Frank Wellington Crusey  
Brooke Crytser  
Debra Cummings  
Sharonlee Cummins  
Holly Cunningham  
Gerald H. Curkendall  
Harold Cutler  
Jannice M. Cutler  
Jeanne D'Arcy  
Roxanna Dabney  
Forrest & Ellen Dahlstet  
Teresa Daignault  
Barbara Daiker

Sherrilyn Daley  
Joy A. & Martin R. Dally  
Robert Daniels  
Marilyn Danks  
Christel & Jim Danning  
Joanna Dansby  
Deborah Darrell  
Dartmoor Pony Registry  
of America  
Chrissy Davenport  
David & Sheri Ramby  
Gene David  
Mari David  
Debra Maness Davidson  
Pamela A. Davidson  
William E. Davidson  
Lynda Davies  
Angelia D. Davis  
Doug & Linda Davis  
Gurney & Nancy Davis  
Nelda S. Davis  
Roni Davis  
Sara Davis  
Susan M. Davis  
T. Eleanor Davis  
Savannah Dawson  
Kim Day  
Keegan Eileen Dayton  
Penelope A. de Peyer  
Sarah Dean  
Helen Decker  
Nicole Decker  
Santino DeFalco  
Tammie delaBarre  
Bill Delamar  
Gloria Delany-Barmann  
Allison DeLong  
Cheryl Delong  
Peggy Delong  
Rosalind DeLuca  
Donald DeMarsh  
Jennifer Dempsey  
Andrea DeMuth  
Jill Dennis-Booth  
Megan Denton  
Amanda Deplewski  
Roy Deppa  
Ella Derbyshire  
Emily McCracken Derrick  
LindaDee Derrickson  
Marie-Claire des Rosiers  
Patty DeSha  
Jan DeShera  
Paul Destito  
Joseph Jerome  
Devereaux  
Nay Dewey  
Crystal Dial  
Neel Dickey  
Mark L. Dickson

Tim & Stephanie Dietz  
Daniel Digiulio  
Steve Dillon  
Gene DiMaggio  
Kate Dimancescu  
Michael G. Dinunzio  
Danielle Dionne  
Caleb Disinger  
Joel & Cheryl DiTommaso  
Rebecca Diwan  
Hobart Dixon  
Joseph & Kay Dixon  
Jana Doak  
Sue Dobson  
Brandt Dodd  
Stephanie-Noel Dodt  
Suzanne Doerrfeld  
Cougar Doherty  
Felipe Dolz  
Laura Donahue  
Rebecca Donker  
Claudia Donnelley  
Susan Dooley Carey  
Melisha Dooley  
Jamie Doran  
John Dorfman  
Robert Doriss  
Joel Douglas  
Richard L. Douglass  
Jennifer E. Douglass  
Lesley Douglass  
Joseph Downs  
Hannah Doyle  
Jeni-Jo Doyle  
Roger G. Drake &  
Kathy Breen  
Kirby Drennan  
Michael &  
Elizabeth Dretsch  
Frederick R. Drexler  
Stephan J. Dreyer  
Rachel Drinkard  
Amanda Driscoll  
Patrick Driscoll  
Juanita Drury  
Mark P. Dubin  
Connie DuBois  
Kimberly DuEst  
Lisa Corcoran Duff  
Samantha Dugan  
Jeanne Dukerschein  
Steve Dulaney &  
Susan Torkelson  
Robin Duncan  
Carla Dawn Dunlap  
Kate Dunlap  
Lara Dunlap  
Richard Dunlap  
Jennifer Durant  
Janice Durbin

*Dr. Tullis Matson, founder and director of Stallion AI Services in the United Kingdom and founder and chair of Nature's SAFE charity, showcases the cryopreservation lab. Photo courtesy of Tullis Matson.*

*Watch one of the equine webinars on Teachable.*



### **INTERNATIONAL GENE BANKING WORKSHOP**

The Livestock Conservancy organized an International Genebanking Workshop featuring partners from TransOva Genetics, Viagen Pets and Equine, Stallion AI Services in England, and STGenetics. Industry experts discussed the role of genebanking in endangered breed conservation, including procedures to collect and store semen, skin cells, and embryos. During the online webinar, former Board member David Kendall presented information about contracts and ownership of genetic materials. Participants left with a better understanding of cryopreservation and resources available to genebank their rare breeds.

### **EQUINE WEBINAR SERIES**

A Summer webinar series, organized and hosted by The Livestock Conservancy for equine owners and breeders, featured highly-regarded equine experts presenting cutting-edge information on Advanced Reproductive Technologies (Dr. Katrin Hinrichs and Dr. Tullis Matson), Equine DNA Testing (Dr. Gus Cothran and Dr. Samantha Brooks), and Marketing and Promotion (Courtney Cooper and Brittany Sweeney). Participants enjoyed a question and answer session with leading industry experts and left with a better understanding of ways to help save their rare breed eqines. The webinars were made possible by a NC Horse Council grant.





*Livestock Conservancy Ambassador and professional chef Ariane Daguin prepares a goose while Brittany Sweeney films her for the "My Goose is Cooked" webinar. During the live workshop, participants learned how to prepare and cook a goose for Goose Month. Photo by Jeannette Beranger.*

## **DEVELOPING DIGITAL CONTENT**

Education and outreach are the best ways to engage a larger audience in the conservation conversation. The experience of seeing and touching a rare breed or their products for the first time can be life-changing. Even though the COVID-19 pandemic limited the amount of hands-on experiences during the past two years, The Livestock Conservancy continued to make impactful connections through virtual events and social media.

Several new programs were developed to showcase the importance of heritage breeds as well as help breeders answer questions and find resources, including the Facebook Live Species Chats, Wooly Wednesdays, and Marketing Mondays. During the live chat, Livestock Conservancy staff members

interview an expert and take questions through Facebook comments on the video post. The recorded chats are available on Facebook, YouTube, and podcasts. To date, The Livestock Conservancy has recorded nearly 100 Facebook Live chats!

In addition to content developed for a growing social media audience, The Livestock Conservancy also partnered with industry experts for several online workshops and webinars including the My Goose is Cooked cooking class with chef Ariane Daguin, Poitou donkey workshop live from the field, international genebanking workshop, the NC Horse Council webinar series, and Shave 'Em to Save 'Em Fiber Challenges.

**\$25 - \$99 CONTINUED**

Suzanne Durham  
Anita Duscher  
Martha Dutton  
Cindy Dyer  
Kathleen Dyer  
Laura Dykstra  
Susanna Dzejachok  
Helga Y. Eaddy  
Sheryl Eaglewoman  
Susannah Eanes  
Amy Elizabeth Earhart  
Robin Eastham  
Jack Ebersole  
Kelsey Eckelman  
Martin & Judy Eckert  
Amanda Eddy  
Kelly J. Eden  
David Edge  
Janet Edmonds  
Simeon Edmunds  
Caitlin Edwards  
Cynthia Edwards  
Jenifer Edwards  
Linda Edwards  
Raeann Edwards  
Rebecca Edwards  
Chandra G. Eggemeyer  
Leon Ehlert  
Jill Eicher  
Nina M. Eiker  
Mary Eiler Radl  
James Eisler  
Cindy Ekleberry  
Melissa Elder  
Danny R. Elkins  
Theresa Elkins  
Chad Eller  
Kylee Brooke Eller  
Sally Eller  
Carolyn Elliott  
Tony Elliott  
Emily S. Ellis  
Jean Ellis  
Travis Ellis  
Nancy Ellison  
Monique Elser  
James Emerick  
Debbie Emerson  
Ted Engel  
Mary Enges  
Arik Engstrom  
Mary E. Engstrom  
Rebecca Enslow  
Ben & Karen Erickson  
Kathy Fraser Erickson  
Elizabeth Erikson  
Barbara Ernst  
Jeff Erway  
Sarah Esther

Jeri Estrada  
Sue Estrada  
Jennifer Etherton  
Sydney Eto  
Melissa Etter  
Deborah J.G. Evans  
Dianne Evans  
Tina Evans  
Roger A. Evenson  
Margaret Eversole &  
Debbi Terwedo  
Michael X. Ewanciw  
Lesley Ewing  
Exchange Place Living  
History Farm Museum  
Elizabeth Fabian  
Kirk Fackrell  
Bobbette Renee' Fagel  
Joel Faircloth  
Wade Fairey  
George Faison  
David R. Faley  
Fancy Fibers  
Janet A. Farkas  
Rocky Farley  
Amy Jo H. Farmer  
Bonnie N. Farrar  
Amy Farrell  
Kenneth Farrell  
Richard Faucher  
Keith & Tracy Favre  
Ron & Ann Fay  
Hildy Feen  
Jean Feeney  
Jessica Feindt  
Jamie Feland  
Kathy Felch  
Jorge & Korynne Feliu  
Carolyn Fenn  
Fawn T. Fenton  
James C. Ferebee  
Fara Ferguson  
Scott Ferguson  
Sherwin Ferguson  
Susan M. Ferla  
Adriana Fernandez  
Marcos Fernandez  
Nicolle Ferrier  
Polly Festa  
Gordon Fetters  
John Fichtner  
Betsey W. Field  
Michelle Field  
Marisa Fife  
Nathan Finch  
Joann Fisher  
Patsy Fisher  
Mikayla Fitzpatrick  
Mark Fitzsimmons  
Doug & Barbara Jo Flack

Kat Flaherty  
Richard Flanders  
Roberta Flanigan  
Jena Fleiner  
Ashlee Fleming  
David Flemister  
Janette Fletcher  
Fleur Creek Farm  
Tim Flickinger  
Gary Dale Flinchbaugh  
Mariah & Curt Flood  
Jaime Flora  
Alexandra Fogle  
Danni C. Fogle  
Margaret Foor  
Michael L. Forino  
Gene Forster  
William G. Foulks  
George Fowler  
Alison Fox  
Catherine Fox  
Heather Frakes  
James W. Fraley  
Wendy Francis  
Sandy Francisco  
Patrick Frawley  
L.J. Frazier Lennon  
Hope Frederick  
Carl Fredericks &  
Becky Rehl  
Wesley A. Freeman  
Brittan Freer  
Dale Louis & Grace Freier  
Ivan French  
Peggy French  
Lila Fretz  
Wendy Freund  
Joana Friesz  
Patricia Frisella &  
Emmanuel Krasner  
Kelly Ann Froehlich  
Holly Froning  
Michaela Fry  
Carol Fuller Powell  
Kevin Fulton  
Cynthia Lynn Fulwider  
Pam Funk  
Seth Furches  
Angel Fyre  
Carol Gage  
Zelda Gagliardi  
John M.S. Galen  
Galiceno Horse  
Breeders Association  
Sally K. Gallagher  
Kai Gallardo  
Hillary Gallino  
Jessica Gallino  
Laura A. Gammill  
Donald Ganger

Michael W. Garbisch  
Sona Gardner  
Karen Gardner-Athey  
Joy Garitone  
Nelson &  
Elizabeth Garnett  
Ethan Garrett  
Caroline Garrison  
Edward R. Garrison  
Kristen Garrison  
Philip Garriss  
LeeAnn Gaskins  
Jennet Gaspar  
Aaron Gavronsky  
Mark C. Gaylo  
Joseph Gaynor  
Jennifer Geist  
Rolly Gelhaus  
Schuyler & Nancy Geller  
Genentech, Inc.  
Arvel Gentry  
George Washington's  
Mount Vernon  
Megan Georges  
Julie Gerard  
Shannon Gerlach  
Erin Kelly Gervin  
Patricia Ann Gettler  
Emily Gibson  
Johnny Gibson  
Susan Gidley  
Rebecca Gilbert  
Jan L. Gillanders  
Edith Marie Gillespie  
James & Elena Gilroy  
Karen Gilson  
Steven G. Gimber  
Liz Gipson  
Charley Giselsbach  
Anthony Giunta  
Give Lively Foundation  
Annie Gladhill  
Shari Glaser  
Sandi Glidden  
Gloucestershire Old Spots  
of America  
Bruce Gluck  
Mary Goddard  
Ed Goff  
Kate Goins  
Rachel Goldberg  
Bobbie Golden  
Sarah Goldson  
Cliff & Cari Gonyer  
Missy Good  
Marian J. Goodding  
Jennifer Goodie  
Fae Grace Goodman  
Tammy M. Goodyear  
Cheryl Gordon



**\$25 - \$99 CONTINUED**

Katherine &  
Wesley Gordon  
Ninon Gore  
Joy Gorzocoski  
Lora Gose  
Bart Goss  
Kathy Gouldie  
Frances Gould-Naftal  
Deb Nelson Gourley  
Zane Graham  
Simone Grant  
Rebecca Grant-  
Radspinner  
Aubrie Graves  
Hannah Graves  
Joanne Graves  
Travis Graves  
James Greathouse  
Alison Green  
Christine & Allan Green  
Greenbank Mills &  
Philips Farm  
Juli Elanor Greenberg  
Sandra Greene  
Sara Greenleaf  
Georgiana Greenough  
Gary Gregory  
Jay Gregory  
Jodi Grever  
Kacy Griffin  
Kristine Griffin  
Leslie Griffin  
Walter Griffin  
Bill & Karen Griffith  
William Griffith  
Chris Griggs  
Hilary Griggs  
Tricia Grills  
Michelle Grimes  
Kay L. Grimm  
Kym Grogan  
David Grote  
Shirley Grothe  
Fred Groverman &  
Lynge Simoni  
Theresa Groves  
Karen Gruner  
Sara Guaraldi  
Tim & Anne Guden  
Lucy Guerre  
John L. Guldemann  
Jessie Gunther  
James A. Guse  
Carolyn Guske  
Molly Guthoeri-Richter  
Pam Haas  
Helga-Liz Haberfellner  
Eileen Hackett  
Larry G. Hackley

Gillian Hadden  
Joe & Carol Haddock  
Kevin Haecker  
Melissa Haertsch  
Tanja Hageman  
Amy E. Hagen-Cowell  
Charles Hailey  
Bobby Halcomb  
David Haley  
Gabrielle Hall  
John & Bonnie Hall  
Ron Hall  
William Hall  
Linda Halley  
Anne Marie Halsey  
Ingrid Halverson  
Carlo Hamacher  
Jan Hamby  
Julian Craig Hamilton  
Margaret Hamilton  
Kathleen & Daniel  
Hamilton-Troyer  
Ed & Pat Hammett  
Kelley Hammonds  
Earl Hampton  
Beth Hamric  
Nathan Hancock  
Angela Hand  
Mark Handelman  
Craig Haney  
Dennis Hanlon  
Sharon S. Hanna  
Waltina Avis Hanna  
Austin &  
Lisa Marie Hansen  
Brian Roger Hansen  
Jane Hansen  
Lorraine Hanson  
Wendy Hanson  
Linda Hardeman  
Alyce Harden  
Rachel LaRue Harding  
Leroy Hardy  
Melissa Lynn Hardy  
Gina Harris  
Jerry Harris  
Laverne & Steve Harris  
Nicole Harris  
Will Harris  
Brenda Harrower  
Mandie Hartford  
Dean A. Hartley  
Randy A. Hartwig  
Ann Harvey  
Maureen A. Harvey  
Carol Hassell  
Olivia Hatcher  
Rebecca Hatcher  
Michala Hauber  
Thor Haveman

Vernon Havens  
Floya Lynn Hawkins  
Jessica Hay  
Rachel Haydon  
Craig Hayes  
Emily Hayes  
Stephanie Hayes  
Chris & Christina  
Haymond  
Anne Hayter  
Kris Hazelbaker  
Burt Heacock  
Patricia Healy Mitchell  
David Heap  
Susan Hearn  
Heartland Highland  
Cattle Association  
Ronald Heater  
Sebastian E. Heath  
Hillary Heckler  
Jennifer Hedrick  
Cheri Heeter  
Nicholas Heidel  
Catherine Heilferty  
Diane Heimann  
Christine W. Heinrichs  
Lisa Heinz  
George Heiser  
Emily Heisler  
Cheri Helbert  
Brian D. Heldberg  
Bethany Heldman  
Jan Helfrich  
Dennis Heltzel  
Bryant C. Helvey  
Melissa Hemken  
Philip Henderson  
Angie & Tim Heneghan  
Kelly Henley  
Patti Henley  
Katherine Henneke  
Carol Hennessy  
Elysa Henry  
Jeffrey Henry  
Angela Hensley  
Leeunder Monrow  
Heptinstall, Sr.  
Jennifer Ann Herbold  
John Hermann  
Steve & Jan Hermansen  
Jane Herrick  
Meredith Herring  
Merle V. Hershberger  
Danny M. Hesse  
Rachel Hester  
Danielle Hettara  
Jeffrey Hieb  
Cody Hiemke  
Patricia Leonard Higgins  
Brandon Hill

Christina Hill  
Patricia Hill  
Shannon Hill  
Steve S. Hill  
Susan Hill  
Vernon & Sarah Hiller  
Amy Hillman  
M. Joan Hiltz  
Jean O. W. Hinchcliff  
James Hinckley  
Telchilde Hinckley  
Elizabeth Hines  
Tina Hines  
Michael J. Hining  
Mike Hinshaw  
Bailey Hirschboeck  
Walter & Cynthia Hittle  
Alena Hixon  
Anne Hoag  
Debra Hockaday  
Ashley Hodges  
AnnaRae Hodgkin  
Amanda Hofeditz  
Dana M. Hoffman  
Paula Hoffman  
Winifred, Martha &  
Miriam Hoffman  
Jamie S. Hoffmann  
Hog Island Sheep  
Breeders Association  
Robert Hogan  
Jessica Hogue  
Amanda Hohnstreiter  
Pamela Holbrook  
Andrea C. Holladay  
Heather Holland  
Michele Hollar  
Don Hollenbeck  
Karen Hollingsworth  
Staci Holtby  
Danny Honeycutt  
Jon & Michelle Honeycutt  
Hoof Hearted Farm  
Annie Hook  
Daniel Hooper  
Kathleen Hopkins  
Hope & Keith Horn  
Clinton Hornbuckle  
Dick Horstman  
Paula Horvath  
Kellee Hory  
Marla Hoskins  
Jim & Debbie Hosley  
Erin Hosman  
Mike Hostetter  
Lynda Hotchkiss  
Lisa Hourigan  
R. L. House  
Lara Howard  
Hobert Howe



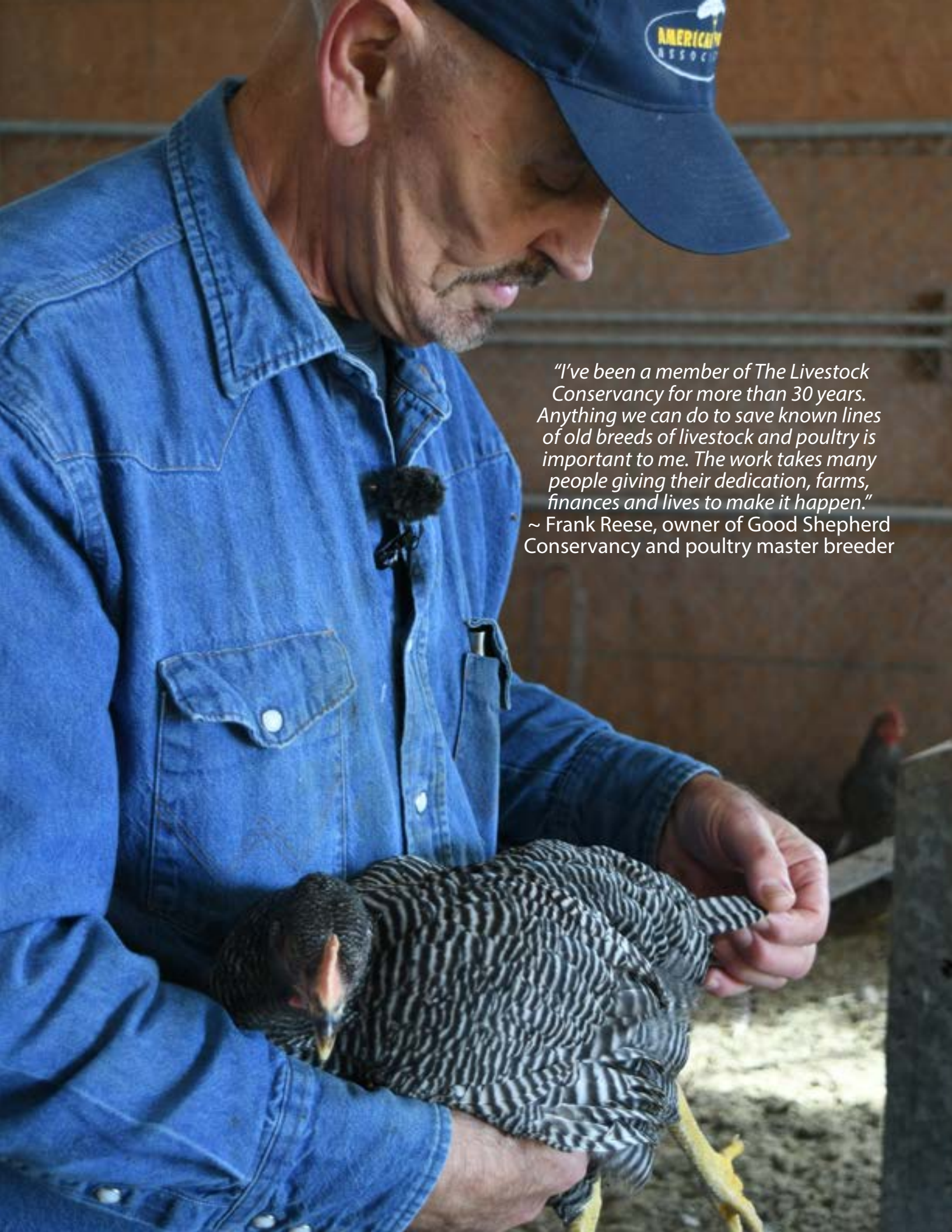


#### **DID YOU SEE THE LIVESTOCK CONSERVANCY ON LOCALISH?**

Jeannette Beranger and Rhyne Cureton were interviewed for the Localish program, which airs on all ABC affiliate channels nationwide. They talked about the importance of heritage breeds and The Livestock Conservancy's role in saving them. The 6-minute segment was filmed at Colonial Williamsburg and featured American Milking Devon and Heritage Shorthorn cattle, Leicester Longwool sheep, Cleveland Bay and American Cream Draft horses, Roman geese, and Crevecoeur, Dominique, and Nankin chickens.

*A curious American Milking Devon cow sniffs the camera during filming. Photo by Brittany Sweeney.*





*"I've been a member of The Livestock Conservancy for more than 30 years. Anything we can do to save known lines of old breeds of livestock and poultry is important to me. The work takes many people giving their dedication, farms, finances and lives to make it happen."*  
~ Frank Reese, owner of Good Shepherd Conservancy and poultry master breeder

**\$25 - \$99 CONTINUED**

Ronald Howe  
 I-Sah Hsieh  
 Anne Huckabee  
 Emily Hudson-Arns  
 Joan Hudyncia  
 Shane & Keri Huff  
 Hannah Huffman  
 Mark A. Hufford  
 Barry Hughes  
 Holly Hughes  
 Josephine Hughes  
 Wendy Hughes  
 Martha Hull  
 Shannon Hull  
 Margie Humphreys  
 Family M Hund  
 Don Hunt  
 John D. Hunt  
 Jinks Hunter  
 Taffy Hunter  
 Julia Hunt-Hill  
 A. Hunyadi  
 Alexander Hurla  
 Travis Hurt  
 Jessica Hutchinson  
 Diane & Steve Hutchison  
 Mary Hutka  
 Christopher J. Hyde  
 Mona Hylton  
 David Lee Hyman  
 Bart Iddins  
 Allison Igo-Edwards  
 Carolyn Ihde  
 Deana Imhoff  
 Andrea Imholte  
 Marjorie Inana  
 Kathy Ingebrigtsen  
 Angela Ingraham  
 Lynda Ingram  
 Linda & Peter Ingvertsen  
 International Cleveland  
   Bay Registry  
 Priscilla M. Ireys  
 Wanda & Louis Irion  
 Irish Draught Horse Society  
   of North America  
 Judith Isaacson  
 Sam Isham  
 TiaKathryn Grace Iversen  
 Vickie Ives  
 R. Kean Ivey, Jr.  
 Amy Jackson  
 Edward S. Jackson  
 Francine Jackson  
 Katherine Jackson  
 Sally Jackson  
 Sean Jackson  
 Sherri Jackson  
 T. Dale Jackson

Terry & Ellen Jacobs  
 Nancy Jacobson  
 Whitney Jacques  
 Victoria Jaffery  
 Abbyghale Jakubik  
 Jennifer Jakubik  
 Danielle James Choiniere  
 Blair James  
 Jennifer Jancek  
 Jenifer Jancus  
 Benjamin Janicki  
 Susan Jarrett  
 Katie Jarvis  
 Gillian Jenkinson  
 Jennifer Jennings-Glover  
 Jennifer Jensen  
 Katy Jensen  
 Laurie Jensen  
 Michael & Debbie Jensen  
 Clarice Jernigan  
 Kenneth & Paige Jobe  
 Barbara F. Johnson  
 Jean A. Johns  
 Adam Johnson  
 Alexis Johnson  
 Allan Robert Johnson  
 Amos Johnson  
 Dennis Johnson  
 Jenni Sheepscot Johnson  
 Jennifer Johnson  
 Joseph Johnson  
 Leslie Johnson  
 Thane Johnson  
 Carolyn Johnston  
 Gail Lynn Johnston  
 Nancy Ann Johnston  
 Marianne K. Jolley  
 Nash Farm  
 Todd Jolliff  
 Amanda Jones  
 Daniel Jones  
 Don Jones  
 J.J. Jones  
 James & Joyce Jones  
 John Keith Jones  
 Kevin & Jennifer Jones  
 Laura Jones  
 Lauren Jones  
 Leida W. Jones  
 Mica Jones  
 Seane Jones  
 Todd Jordan  
 Vanessa Jordan  
 Joshua E. Jordison  
 Andrew Joseph  
 Catherine Jost  
 Jennifer Justiss  
 George W. Kahrs  
 Michael Kalagher &  
   Anna Hanchett

Karen Kalenauskas  
 Jami Kalusche  
 Tony & Ann Kaminski  
 Brandon & Alisa Kamon  
 Arthur &  
   Kathrine Kanneman  
 Clare Kansley  
 Karakul Shepherds  
   Alliance  
 Sarah Karr  
 Cindy Katseyeanis  
 Constance Katzenbach  
 Matthew Kaul & Family  
 Glenn & Mary Kauppila  
 Katherine Kayser  
 Christina Keach  
 Kajsa Keane  
 Cristi Kearn  
 Lisa Keep  
 Joshua Jeremiah Keesling  
 Susan Kegley  
 Joyce Keibler  
 Jacob Keim  
 Tyler Kellerman  
 Maud Kelley  
 Charlie Leko Kemmer  
 Norman Mitchell Kemmer  
 Jonathan Kemmerer  
 Monica Ann Kennedy  
 Owen & Mary K. Kennedy  
 Andrew Kennett  
 Deborah Kent  
 Elaina Kenyon  
 Robert Keppert II  
 Lee & Joy Kerby  
 Thomas & Emily Kerley  
 Carlene & Michael Kerr  
 Carrie Kerr  
 Kerr Center for  
   Sustainable Agriculture  
 Patricia Powell Kessler  
 Roberta W. Kick  
 Nick Kilburg  
 Charles Kile  
 Tom & Susanne Killian  
 Margo Killoran  
 Donny Kimber  
 Collette Kinane  
 Kathy Kinford  
 Angela G. King  
 Dennis King  
 Jessica A. King  
 Karen King  
 Ollie King  
 Pat King  
 Jean Kinnear  
 Monique Kinney  
 Paul Kinney  
 Ivan Kinsman  
 Stephanie Kiratzis

Lori Kirk  
 Russell A. Kirk  
 Sara Kirk  
 Clayton C. Kirking  
 Judy Kirsch  
 Janet Kirshner  
 Richard Robert Klassen  
 Jennifer Klavitter  
 Letty Klein  
 Donna B. Kleinert  
 Esther Kleinkauf  
 Kimberly Kline  
 Janet Kloepfer  
 Wesley E. Kloos  
 Karen Kluttz  
 Shannon Knight  
 Linda Knipper  
 Sean Knowles  
 Farah B. Knudsen  
 Charlotte A. Koch  
 Maureen Koch  
 Tanya D. Koenig  
 Barry L. Koerber  
 Robin Kohanowich  
 Debra Kohloff  
 Felicia Konrad-Bevard  
 Gail Koos  
 Linda M. Koranek  
 Valerie Kosaka  
 Katherine Koudele  
 Lisa Kowalyszyn  
 Luke Kraft  
 Douglas & Joyce Kramer  
 Laura Marie Kramer  
 Melissa R. Kreuzer  
 Karen Krieger  
 Erin Krier  
 Laurie Krisko  
 Kyle A. Krivanek  
 Brad Krueger  
 Samuel Kruppenbacher  
 Myra Kubicek  
 Charles W. Kuhlman  
 Keith Kuhnsman  
 Donald A. Kumpula  
 Rachel Kurasz  
 William R. Kuykendall  
 Pamela &  
   Herb Kwasniewski  
 Charlene F. Labombard  
 Therese LaCasse  
 Laurie Lacey  
 Kara Lading  
 Carter & Janet Laidlaw  
 Andrea Lain  
 Kay Lambert  
 Bambi Lamborn  
 Falina Lamborn  
 Judith Lamont  
 Kerri Lamorey



**\$25 - \$99 CONTINUED**

Tanner Landers  
Kerry & Heidi Landin  
Kathy Landis  
Donna Landy  
Jessa Lane  
Kathleen Lange  
Ernie Langenbach  
Sheridan Rowe Langford  
Mike & Becky Lannon  
John Lanza  
Virginia G. Laplante  
Jake Lapp  
Vivianne Lapp  
Rob Larew  
Marianne Largent  
Steve & Kayla Largeteau  
Donna Larsen  
Elizabeth Larson  
Joshua D. Larson  
Lindsey Larson  
Raquel Larson  
Richard & Donna Larson  
Zeus & Terry B. Lary  
Trisha Lasar  
Susan Lascelles  
Vivian Sophine Lasnier  
Clarke T. Laszlo  
Jacqueline Laughlin  
Lyndsi Laughlin  
Russell Laux  
Angie Lavezzo  
Claire Lavina  
Belinda Lawhorn  
Danielle Lawrence  
Jennifer Lawrence  
Kelsey Le  
Laura L. Leach  
Tabitha Leadbetter  
Andrea League  
Yvan Lebel  
Gail LeBow  
Julie Lebowitz  
Bryan Leccese  
Alex LeClaire  
Barbara M. Lee  
Etta Lee  
Michelle Lynne Lee  
Sarah & James Lee  
Amy Leek  
Kathryn LeFevre  
Judi Raff Lehrhaupt  
Monica Leibacher  
Elizabeth Leibovitz  
Alan Leighton  
Pedro & Laura Leite  
Debbie Lemke  
Loudene R. Lemme  
Bridina Lemmer  
Elsa Lemoine

Katy Lente  
Robin Lentz  
Docia Lenz  
Elizabeth Leonard  
Alan LeQuire  
Lacey Lescaudron  
Deanna Lettington  
George Leverton  
Leila Levi  
Charlotte Levy  
Jamie Levy  
Anita M. Lewis  
Bryce Lewis  
Clarence Lewis  
David William Lewis  
Rebecca Lewis  
Stephen M. Lewis  
Rebecca Lexa  
Tiffany Leyva  
Leah Lick  
Heather Lieber  
Jason Lightfoot  
Aimee Lilley  
Jennifer Lindberg  
Erika Lindgren  
Sandra Lindner-Turner  
Barry Lindsey & Elizabeth  
Graser-Lindsey  
Samantha Lindsey  
Erin Amanda Link  
Nicole Link  
Stephen Linne  
Jocelyn Linnekin  
Alice Linskey  
Lippitt Morgan  
Breeders Association  
Deborah Lippitt  
Robert Lisowski  
Joanie Livermore  
Jenifer Livesey  
Jose Llenin  
Nicole Locher  
Jacob Dale Loehr  
Kim Lohr & Gary Baise  
Rebecca Loncaric-Horton  
Long Grey Line Farm, LLC  
Emmaline Long  
Mary Longhill  
Fred Longino  
John Longworth  
George P. Looby  
John J. Looney  
Mary Loper  
Joel Lopez, Jr.  
Runo Lorentzon &  
Betsy Erickson  
Douglas G. Lorenzen  
Maria Losh  
Janet Louie  
Sue Loustaunau

Harold Loveall, Jr.  
Ed Lowe  
Reynold & Judith Lowe  
Rick Lowe  
Georgia Lowry  
D. P. & Dan Lowther  
Jeanne Luddeni  
Charles &  
Kimberly Luddington  
Jessica Ludwicki  
Natalie Ludwig  
Heather Lueck  
Jean-Marie Luginbuhl  
Claire Lundberg  
Carrie Lundeen-Young  
Sarah Lung-Lincoln  
Chris Lutmerding  
Mark Lutze  
Duane & Kelly Luzier  
Robin Lynde  
Cheri Lyon  
Ruth Henriquez Lyon  
Suzi Lyter  
Kay J. Lytle  
Lila Mable  
Seth & Sarah  
Mackay-Smith  
Kay E. B. MacNeil  
Tomia MacQueen  
Danielle Madore  
Nilah Magruder  
Claire D. Mahoney  
Jeff & Kristin Mains  
Sharon Maish  
Marley Majcher  
Will Major  
Michelle Makowiecki  
Christine Maleta  
Cheryl Malheim  
Peg Mallett  
Michelle Susan Malloy  
Nathalie Malouf  
Lori Malson  
Alesia Maltz  
Pamela Manaton  
Jim & Irene Mandracchia  
Laura Manns  
Molly &  
Antonio Manzanares  
Marathon Petroleum  
Alexander Marcus  
Pamela Marcus  
Colleen Marino  
William & Lori Marion  
Kenneth Marker  
Scott Markwart  
Richard & Audrey Marlar  
Jana S. Marlin  
David & Gloria Marshall  
Ronald M. Marth


Edie Martimucci  
Allison Martin  
Barbara Martin  
Kathy Martin  
Katie E. Martin  
Marisa Martin  
Mary Catherine Martin  
Michael Martinez  
Donna Martinson  
Charlotte Marvin  
Clinton Jack Mason  
Nadine Massarelli  
Faye Mast  
Ivan Mast  
Maria Mathis  
April Matiassek  
Daniela Matlock  
Larry Matson  
Suzanne Matteo  
Matthews Living History  
Farm & Museum  
Kathleen &  
Alan Matthews  
Marian Matthews  
Melissa Mattio  
Pamela Mattis  
Dennis & Laurie Mau  
Mara Mauch  
Amanda Maupin  
Donald E. Maurer  
Gertrude Maxwell  
Kylee May  
Steve Mayer  
Karen Q. Mayhew  
Kimberly Mayhew  
Adrienne Maynard  
Amy & Brent Maynard  
Kristin Mayo  
Corinne McAndrews  
Carola McAvoy  
Ryan McBride  
James W. McCabe  
Heidi McCaffery  
Linda McCandless  
Robert G. McCann  
Whitney McCauley  
Angela McClary  
Ken McClellan  
Marguerite McClintock  
Kathy McClure  
Debra McCluskey  
Carol McConaughy  
Thomas McConnell  
Toni McCormick  
Danielle McCoy  
Tamara McCrossen  
Nancy McCulloch  
McDermott Family  
John V. McDermott  
Shira McDonald

## **DID YOU READ ABOUT MARSH TACKY HORSES IN USA TODAY?**

*Read the article featuring member Shannon Hawkins and staff member Jeannette Beranger. Photo of mare Flaca and foal Clover by Josh Morgan.*





A woman with a green knit hat and a dark jacket is smiling and holding two small white alpacas. The alpaca on the left is wearing a red harness, and the alpaca on the right is wearing a colorful patterned scarf. They are in a wooden barn setting.

*"I love that The Livestock Conservancy started the SE2SE Initiative. I have been really happy to see so many fiber artists embrace it and become educated about the various breeds and their status. It's been an excellent educational tool." ~ Tamara White of Wing & A Prayer Farm in Virginia*

**\$25 - \$99 CONTINUED**

Sidonna McDougal  
Marie McElmurray  
Susan McFarland  
Ethan McGaffey  
Collen McGee  
Dale & Christine McGoron  
Shannon McGraw  
Kimberly McGrody  
Kris McGuire  
Alan & Amy McKamey  
Paul McKay  
Collette Eugene Mckee  
Hallie McKee  
Robert H. McKellar  
Arthur L. McKenzie, II  
Adam McKinley  
Julia McKinley  
Jacqueline McLaren  
Charles McLaughlin  
Frank & Rebecca McLean  
LeAnne M. Lemmond  
Fiona McLeod  
Stephanie McMahan  
Sarah McManus  
Quincy Gray McMichael  
Deborah McMurtrie  
Christee A. McNeil  
Ened McNett  
Katrina McNew  
Patricia McNulty  
Steven McNutt  
Jess John McPhee  
Sally Amanda  
McSpadden  
Todd McVay  
Sharon McWatters  
Patricia D. McWilliams  
Sheryl Meacham  
Jolyn Meehan  
Jane Meggitt  
Paul Meinertz  
Perry Melchi  
Phillip Meline  
Lyle J. Melkerson  
Carlin Menzin  
Natalie Mercado  
Vicki Merchlewitz  
Stephanie Meredith  
Merlin's Magical  
Menagerie  
Richard Messer  
Tim Metts  
Pamela J. Metts-Boyer  
Milissa Meyer  
Pennyanne Meyers  
Gina R. Michael  
John Michael  
Mark & Shelley Michaels  
Naomi Midkiff

Julie Miele & Casey Cook  
Sheila A. Mikkelsen  
Laura Milburn  
Andrew Nash Miller  
Brian & Janella Miller  
Cheryl Miller  
Jade Miller  
Janna Miller  
Julie Miller  
Kelly Miller  
Sara Miller  
Linda Millett  
L. Beth Milligan  
Elizabeth Mills  
Marsha Milroy  
Chris & Vicki Minx  
Andrea Miranda  
Dana Mirsky  
Jaimee Mirsky  
Kristen Mischker  
Brandi Mitchell  
Emily Mitchell  
Janice Mitchell  
Steven Mitchell  
Annette Mixon  
Jackie Mobley  
Eleanor Mocker  
Cherie Mockler  
Tim Molinero  
Erin Moll  
John Monaco  
Debbie Mongan  
Victoria Mongold  
Frances Montgomery  
Michael Todd  
Montgomery  
Shaun Mooney  
William Mooney  
Ann Moore  
Briana Moore  
Danny Moore  
David Alan Moore  
Don Moore  
Forrest & Tracie Moore  
Frances Moore  
Falcon Park  
Helen S. Moore  
Irazema Moore  
Karen Moore  
Leland Moore  
Philip K. Moore  
Robert Moore  
Rosemary Moore  
Stacy Moore  
Susan Moore  
Melody &  
Philip Moorehouse  
Jamie More  
Norm Stacy Morgan  
Patricia Morgan

Phillip & Sheryl Morgan  
Rebecca Morgan  
Shanda Morgan  
Tess Morici  
Julie Morris  
Sandra Monica Morris  
Jenifer S. Morrissey  
Mary Helen Morrow  
Tammy L. Morrow  
Lyn M. Mortimer  
Michelle &  
Douglas Morton  
Orland Moses  
King Mott  
David Mount  
Christina E. Moutray  
James &  
Jacqueline Moyer  
Lori A. Mudloff  
Stephanie Muff  
Clara Mulligan  
Yvonne Munson  
Derek Murawsky  
Christine Murphy  
Don & Mary Murray  
Donald, Marilyn &  
Celina Moncrief  
Julie Murray  
Ken & Anne M. Murray  
Nicole & LaVonne Murray  
Jennifer Musselman  
Shannon Mutschelknaus  
Deborah Myers  
Douglas Myers  
Geraldine P. Myers  
Jim Myers  
Jo Ann & Wayne Myers  
Cathleen B. Mysak  
Kevin R. Nagele  
Gabriella Nanci  
Susan A. Napotnik  
Valerie Nardo  
Michelle Nardozi  
Carol & Jerry Nash  
Nashville Zoo Grassmere  
Historic Farm  
National Sebastopol  
Geese Association  
Lindsey Nations  
Navajo-Churro  
Sheep Association  
J. W. Necker  
Teresa Neiding  
Kelly Nelson  
Leslie Nelson  
Michael Nelson  
Penelope C. Nelson  
David Nemarnik  
Dale Nemitz  
Richard & Julia Ness

Holly Nestberg  
Bjorn Karsten Netland  
Lori Neumann  
Mark Newhall  
Jennifer Newman  
Lindsay Newsome  
Rees Newton  
Matthew Nichols  
Nils Nichols  
Jack Nicholson  
Rod Nickerson  
Lorraine Nielsen  
Kenneth Nieman  
Suzanne Niemann  
Deborah Niemann-  
Boehle  
Joseph Niemiec  
Margaret Nies  
Chris Niewiarowski  
Dan Nigh  
Jennifer Nimmrichter  
Kulick  
Robin Nistock  
Teresa Nittmann  
Neil V. Noack  
Dawn Noble  
Derek Nolin  
Christina Marie  
Trotter Nooner  
Veronica Nordeen  
Dianne Norden  
Hettie Norlund  
Courtney Norman  
Em Norman  
Frank Norman  
Melinda Norris  
North American Budenny  
Horse Registry  
North American Clun  
Forest Association  
Northwest Yarns  
Meredith Norwich  
Sarah Nothnagel  
Felicia Novak  
Samir Novruzov  
Terry M. Noward  
Dorian Nygard  
Eleanor J. Oakhill  
Martha Oberholtzer  
Dahlia O'Brien  
Katharine O'Brien  
Sarah Oden  
Marilyn Oehler  
Suzanne O'Hara  
Keith T. Ohlinger  
Joyce M. Okuniewicz  
Old World Wisconsin  
Basil Oleschuk  
Anita Olinga  
Robert Paul O'Linn



**\$25 - \$99 CONTINUED**

Jen & David Olivelli  
B. Eileen Oliver  
Rory Olmstead  
Corina Olsen  
David Olson  
Leota Olson  
Pamela & Paul Olson  
Tim A. Olson  
Michael O'Neill  
Ryan & Melissa Ordway  
Belinda O'Reilly  
Brienne Orr  
Kristen Osgood  
Linda J. Osienski  
Barbara Oslund  
Kelly K. Osman  
Nate Oswald  
Kelli Otting  
Kelly Otty  
Bill & Laura Outlaw  
Bonnie Owens  
Samantha Oxford  
Susan Pabody  
Sunshine Paciaffi  
Jodie Pacy Satterfield  
Ana Padilla  
Amy Palmer  
Chris Palmer  
Wendy Palmer  
Nipon Pan  
Greg Panarello  
Elizabeth Panus  
Andrea L. Parent-Tibbetts  
Beverly Park  
Cheri Parker  
Cassie Parrott  
Dustin Parsons  
Felicia Parsons  
George R. Pasley  
Sallianne Denham Patch  
Clare Patrick  
Amanda R Patten  
Jeffrey Patterson  
Scott Patterson  
Caitlin Patton Rosenberg  
Lance Paulsen  
Craig Pavlick  
Christiane Payton  
Sarah W. Pearre  
Diane Pearsall  
Amber Peck  
Molly Pectol-Kesler  
Sarah Pedelty  
Joyce L. Pedrotti  
Jami Peecher  
Alison W. Peeler  
Steve Pegram  
Jan Pelfrey  
Holly Pendorf

Danielle Penney-Stroop  
Linda Penrod  
Janet A. Percival  
Stacey Perea  
Rebekah Perez  
Carter Perry  
Lorraine Perry  
Melissa Perry  
Scott Perry  
Sharon & Jack Perry  
Luana Pesco Koplowitz  
Albert J. Petersen Jr.  
Permelia S. Peterson  
Tenold & Karen Peterson  
Marcy Petrini  
John Petrov  
Elizabeth Phalen  
Duy Pham  
King A. Phelps  
Carmella Phillips  
Chester Phillips  
Daniel T. Phillips  
Gareth Phillips  
Jane Ayers Phillips  
King Phillips  
Laura Phillips  
Rhonda Phillips  
Jamie Picardy  
Bill Picken  
Pamela B. Piepergerdes  
Ashley Pierce  
Jodi Pierce  
Marenda Ann Pierce  
Barbara Ann Pierson  
Robin Pike  
Wendi S. Piller  
Haley Ping  
Diane Pionegro  
Brittany & James Pippin  
Dante Pirouz  
Marilyn Pisani  
Alaura Pittman  
Jessica Pitts  
Justin Pitts  
Glenda Plummer  
Linda Pluschke  
Mark Podgwaite  
Ron Poitras  
Austin Polchik  
David L. Pollock  
Larry Poole  
Popielinski Family  
Peggy Popour-French  
Jacalyn Post  
Lisa M. Post  
Mayra Post  
Bill Mahler & Kate Potter  
Marie Elena Potter  
Mitchell H. Potter  
John & Lexie Poulson

Jamie Powell  
Steve & Glenda Powell  
Brenda Powelson-Vick  
Aiden Powers  
Anika Tene' Prather  
Sundi Precht  
Lynn R. Prell  
Sheryl Preslar  
Ben Prevatt  
Jennifer Price  
Karen Knight Price  
Patricia Price  
Patricia McCoy Price  
Peggy Price  
David Prichard  
Brandan Pridgen  
Mark & Lynette Priest  
Tom Primmer  
Susan Proctor  
Randy & Holly Prosise  
Ashley Pruitt  
April Prusia  
Barbara Ann Pshigoda  
Joe Pumphrey  
Karen Puracan  
Carlton L. Purvis, III  
Claudia Putnam  
Maryann Putt  
Donna Putzier  
Steve & Sonja Pyne  
Susan Quick  
Rempert Quijano  
Claudia Radcliffe  
Carol S. Radford  
Jeanne Radke  
Jordan Radley  
Deirdre Rahn  
Jason Raines  
Jude C. Rakowski  
Kelly Ralph  
Tom Ralya  
Lisa M. Ramdass  
Tyler Ramer  
Chris Ramos  
Garrett Ramsay  
Tonya L. Ramsey  
Linda Randall  
Lee Rankin  
Kathy Ranzinger  
Callene M. Rapp  
Eric & Callene Rapp  
Saviik Rasbury  
Keith Rathbone  
Larry W. Rauert  
Natasha Rausch  
Robert Rausch  
Ed Ravenel  
Gail Raymond  
Dyan Redick  
Carla Reding

Courtney Reed  
Megan Reed  
Duane Reeder  
Kelsey Reeder  
Stephanie Reedy  
Allison Reeves  
Jon & Julie Refer  
Virdie V. Reichel  
Marilee J.  
Reinhart-Davieau  
Jennifer Reinshagen  
Gregory Reisor  
Mark Remmert  
Denise Renk  
Richard D. Reynnells  
Kathryn Reynolds  
Daniel Rhoades  
Meade Rhoads  
Jennifer Ricciardi  
Shannon M. Rice-Nichols  
Angela L. Richard  
Jane Richards  
Pamela M. Richards  
Scott Richards  
J.R. Richardson  
Marie Richardson  
Melisa Richardson  
A. S. Richardson-Eckes  
Anita Richert  
Donald & Susan Richey  
Wanda Richlen  
Sarah Richmond  
Charles Richter  
Katie Rickenbach  
Bryant Rickman  
Bridget Ann Riddle  
Michele Ringger-Weil  
Roberto Rios  
Heather Risher  
Brit Ritchey  
Frank & Jacqueline Ritz  
Janet Rivara  
River Oaks Cattle  
Company  
Harry & Christina Rivera  
Shayne M. Rivers  
Alexis Robbins  
Amanda Roberts  
Angela Roberts  
Gale Roberts  
Stacey Roberts  
Susan L. Roberts  
Victor Alan Roberts  
Alexandra B. Robertson  
Amy W. Robertson  
David & Diane Robertson  
Margaret Robertson  
Robert Robillard  
Bryan &  
Jennifer Robinson



A detailed photograph of a Redcap Katahdin chicken, a rare breed of hair sheep. The chicken is shown in profile, facing left. It has a large, bright red comb and wattle. Its feathers are dark brown with prominent golden-brown or copper-colored lacing. The tail feathers are dark and slightly upturned. The chicken is standing on a light-colored, textured surface that has a repeating pattern of small, stylized floral or leaf motifs. A small, pinkish-red tag with the number '4' is visible on its right leg.

*"Why did we choose Redcaps? Our Katahdin hair sheep used to be on The Livestock Conservancy Conservation Priority List in the Watch category. Katahdins have since graduated off the list because of a surge in numbers and are doing quite well. When we wanted to assist with a rare poultry breed, we looked at the list again. The Redcap was our favorite Critical chicken." ~ Lynn and Richard Rocha of Dautobi Acres in Texas.*  
Photo by Jeannette Beranger



*"We are so proud to be members of this important organization. This community has inspired us to add even more endangered breeds to our farm. We've been raising Saxony ducks for many years, but since last summer have added Dutch Hookbills and Silver Appleyards. Separating by breed during hatching season has become very easy as we can house them with our Sebastopol, Cotton Patch, and American Buff geese. Our beloved flocks wouldn't have been possible without the resources and fellow members of The Livestock Conservancy. These people know how to network!" ~ Amy and Daniel Balog of Goose & Fig Farm in Tennessee*



*Photo of American Buff geese, listed as Watch, by Jeannette Beranger.*



**\$25 - \$99 CONTINUED**

Donald E. Robinson  
Jeffrey P. Robinson  
Jill Robinson  
Kathleen S. Robinson  
Nila Robinson  
Tyler Robinson  
Jeri Lynn  
Robinson-Lawrence  
Richard & Lynn Rocha  
Jessica Rockhill  
Michael Rodgers  
Joyce Rodler  
Filipa Rodrigues  
Derrick Rodriguez  
Laura Rodriguez  
Robin Roemer  
Ken & Terri Rogers  
La Donna Rogge  
Mike & Debra Rohrig  
Wade Roitsch  
Angelyn Roling  
Daina Rollor & Kim Boyce  
Mary Katherine Romberg  
Cesar Alejandro  
Romero-Pineiro  
Allan Roost  
Richard Roper  
Louis Rorimer  
Kathleen Rose  
Kathy Rose  
Rick Rose  
Sherry M. Roseberry  
Michael L. Roskey  
Allison Rostad  
Terri Rostad  
Kenan Rote  
Wesley Rouse  
Erica Routt  
Michael Rowen  
John Rowland  
Terra L. Rowland  
Tim & Elizabeth Rowland  
Dale Roy  
Susan Rudolph  
Diana Rudy  
Janis L. Rudy  
Joseph Rudy  
Richard S. Ruffolo  
Jens Aubin Rummler  
Jenny Rusher  
Melissa Rusnak  
Margaret B. Russell  
Stephan Russell  
Becca Ruth  
Lacie Ryder  
Mindi Rydzik  
Lyssa Sabia  
Marjorie L. Sabino  
Vincent Saccomani

Christopher Sachs  
Susanna Sadler  
Ellen Sakornbut  
Ken & Ronda Salge  
Juan Salomon  
Rafael Salomon  
John & Leah Saltzman  
Alycia & Ryan Salvas  
San Clemente Island Goat  
Breeders Association  
Marcia Sanchez  
Walter Sanchez  
Robert Sandberg  
Timothy Sanders  
Vernon Sanders  
Wendy Sanders  
Catherine J. Sands  
Ben Sanford  
Kelly Sanford  
Patrick & Justine Sanger  
Wendy Santamaria  
Raoul &  
Chandler Santiago  
Patricia Sanville  
Lorraine Savidge  
Kendy Sawyer &  
Bob Hines  
Jonathan Sayles  
Audra Saylor-Hall  
Michelle Sberna  
Naomi E. Scanlon  
Sunny B. Schacher  
Earl G. Schacht  
Adam Schapaugh  
Sabrina Scheerer  
Stefanie Schermerhorn  
Beverly Schieman  
Ashly Schilling  
Andrew & Jodi Schipper  
Robert Schipper  
Michael Schlumbohm  
Bernd &  
Gretchen Schmelz  
Burdette &  
Nancy Schmidt  
Mike A. Schmitz  
Silke Schneider &  
Richard Felger  
Lynn Marie Schoenborn  
Kendall H. Schoenhals  
Matthew Schofield  
Jo Elaine Schon  
Linda C. Schooler  
Joseph H. & Peggy Schott  
Sonja Schowengerdt  
Hannah Schroeder  
Orva L. Schultis  
Edward N. Schultz  
William Schultz  
Mark & Jamie Schulz

Tia Schurecht  
Carl Schwartz  
Matthew Schwartz  
Gary Schwefel  
Diane Schwingle  
Lana Scofield  
Loretta Scott  
Mara J. Scott  
Tammie Scott  
SDG Farm  
Ronald R. Seagrave  
Jenifer Sealy  
LeMoyné Seamster  
Katherine P. Seaton  
Judi Seaver  
Linda Sebring  
Nicki Seeler  
Morgan Seeley  
Jason Robert Seelow  
Cammie Seferovich  
Edward & Suzanne Sell  
Andrew Sensenig  
Dimas Manuel Sequeira  
Mathilde Serrette  
John P. Sersanti  
Janis Serven  
J. E. Bert Severns  
Patti Sexton  
David Seydel  
Kraig Shafer  
Abra Shapiro  
Christine Sharp  
Evan Shaw  
Jas Shearer-McMahon  
Beth P. Sheetz  
Nancy Shelley  
Barry Shelton  
Laurel Sherrie  
Kelly Sherwin  
Tim Shield  
Tamara Wedin Shields  
Amanda Shine  
Henry D. & Patricia Shirley  
Nancy Shirley  
Judith Short  
Dee Shouse  
Benjamin Shughart  
Carol F. Shuh  
Douglas Henry Shute  
Rodney Sickels  
Lizzie Sides  
Shannon Sillanpaa  
Bennet & Nicole Silver  
Bruce & Katherine Silver  
Phillip J. Simmonds  
Brian Simmons  
Leilani Simmons  
Alisia Dawn Simons  
Beverly Simpson  
Julie Simpson

Branden Singh  
Elizabeth S. Sinnigen  
Mark & Karen Sisk  
Jeana Sistrunk  
Jeff & Donna Siverd  
Denise L. Skidmore  
Alex Skinner  
Laura Skinner  
Linda Skountzos  
Thomas & Gina Slater  
Shawn & Heidi Sloan  
Caroline Sloss  
Shannon Smedley  
Richard N. Smethurst  
Brent Smith  
Caleb Smith  
Dawne Smith  
Galen & Katherine Smith  
Granville Smith  
Greg Smith  
Heather Smith  
Heidi Smith  
Joan Smith  
Joella Smith  
Kara Smith  
Karen Smith  
Kathleen E. Smith  
Lance Smith  
Margaret A. Smith  
Meghan Smith  
Nancy B. Smith  
Patty Smith  
Regina Smith  
Reliford Smith  
Robert Smith  
Roni Smith  
Sue Smith  
Todd Smith  
Susan S. Smithburg  
April Smurda  
Ilene Smyth  
Barbara Snook  
Joe Snow  
John Snowball  
Gloria Snyder  
Elisha G. Somerville  
Larry Sorell  
Larry Sorensen  
SourWood Fiber Farm  
James C. Southard  
Jan Southers  
Stephanie Spangler  
Brett Sparkmon  
Allan & Kim Sparks  
Dawn Sparks  
Natasha Sparks  
Foster Speichinger  
Marsha Spencer  
Stefani Spencer  
Donna Spencer-Riehle



**\$25 - \$99 CONTINUED**


David W. Sperling  
Erin Spiker  
Donna Parlin Spilman  
D. Phillip Sponenberg  
Ed & Elizabeth Sprancis  
Springs of Living  
Water Farms  
Benjamin Squire  
Georgiana Srachta Dodd  
Laura St Clair  
St. Croix Hair Sheep  
International Association  
Judy St. Leger  
Amanda St. Peter  
Anja Stadelmann  
Susanne Stadler  
Heidi Stallings-Perry  
Ryan Stanley  
Melissa Stansbury  
Troy Stapek  
Charity Steager  
Margaret Steen  
Laura Steevens  
Ken Steffenson  
Lisa Jean Steg  
Marsha L. Stein  
Roy Steinbrecher  
Deborah Stenoien  
Jaime Stephan  
Keith Stephens  
Patricia Stephenson  
Paula Stern  
Bernard Stevens  
Jenny Stevenson  
Andy Stewart  
Karen J. Stewart  
Kelli Stewart  
Mark Stewart  
Richard Stierwalt  
Brian Stiff  
Chad Wayne Stiffey  
Liesa C. Stiller  
Angel Stipetich  
Laurie Stogin  
Anthony Stokes  
Maria H. Stoll  
Michael Stoll  
Robert & Ruth Stolting  
Jacob Stoltzfoos  
Yvonne Stolworthy  
Heidi Stone Black  
Mac Stone  
Linda Stoops  
Blaze Stoute  
Marguerite Strand  
Joanne Bluhm Stratton  
Ralph Strausbaugh  
Mariel Stroschein  
Jacob Stroud

Elaine Stuard  
Cameron Stubbs  
Tracy Studer  
Luke Stultz  
Janine D. Sturgeon  
David R. Sullivan  
John A. Sullivan  
Michael & Lisa Sumpter  
Ronnie Sumrall  
Zane W. Sunday  
Julia & Paul Suntrup  
Cat Susch  
Rose Mary Sutkins  
Leon Svoboda  
Shelley Jo Swain  
Jack Swanson  
Brittany Sweeney  
Chyllie Sweeney  
Pamela Snow Sweetser  
Terry Sweitzer  
Sascha Swetnam  
Jeannine Swickler  
Robert M. Swift  
Gayle Sword  
Charles Sykes  
Jessica Szachury  
Lisa Szarka  
Rosemarie Szostak  
Laura Talaga  
Anne Taliaferro &  
Greg Oldham  
Claire Talltree  
Bev Tarpill  
Mary Tavalacci &  
Michael Quirk  
Amy Taye  
Connie M. Taylor  
Dana Taylor  
Erick & Patty Taylor  
Lewis & Hope Taylor  
Olivia Taylor  
Patricia & Craig Taylor  
Peggy L Taylor  
Vicki Taylor  
Yvonne Taylor  
Ed Tech  
Angela, Hannah &  
Sarah Tedlock  
Stephanie Teed  
Richard &  
Tamela Tennison  
Kevin & Clair Terrell  
Robert Thames  
The Lincoln Family Home  
Erin Thibault  
Dennis Thibeault  
Amber Thomas  
Ben Thomas  
Charles &  
Catherine Thomas

Joyce Thomas  
Nina Thomas  
Felicia Thomason  
Barbara Thompson  
Buddi Lynn Thompson  
Daniel Thompson  
Ingrid Thompson  
Katie Thompson  
Nancy Neeley Thompson  
Rebecca Thompson  
Tim & Mary Thompson  
Margaret P. Thomson  
Martha Thomson  
Luciana Thornton  
Mickey Thornton  
Seth Thorp  
Donalee Jay  
Thurber-Rodger  
Mark Andrew Thurston  
Sally Tibbits  
Moiria M. Tidball  
Davis Tierney  
Al Tilton  
Shirley Tinker  
Dan Tinsley  
Janet Tipton  
Cecilia Tkaczyk  
Kevin Tobias  
Eric & Lori Lynne Todd  
Melissa Todd  
Linda Toenniessen  
Kelley Tomlin  
William Tomlinson  
Robin Touchet  
Lisa Towery  
Holly Tracy  
Courtney Trares  
Patricia Traub  
Susan Travers  
Chapman Traylor  
Pam Trent  
Joan Trentadue  
Deborah K. D. Trimmer  
Tacy Trippe  
Valerie A. Trojan  
Lura Trossello  
Bill & Sandy Truckner  
Susan Trukken  
Joseph E. &  
Michele Trumpey  
Saori Tsujimoto-Adams  
Sloane Tuck  
Katherine Sky Tucker  
Leon O. Tucker  
Mary Tucker  
Meghan Tucker  
Michael Tucker  
Grace Tully  
Finn Tuomisto  
Carolyn Turinetti

Babette Turk  
Katy Turnbaugh  
Jacob Turner  
Jane Turner  
Renard Turner  
Sharon Turner  
Lisa Turney  
Debbie & Frank Turrell  
Barbara Tuss  
Kim A. Tuttle  
Priya Tuvell  
Linda R. Uihlein  
Uncle Donald's Farm, Inc.  
Kimberly Underwood  
Marinda C. Underwood  
Alison Ungar  
U.S. Lipizzan Federation  
Univ. of Idaho Library  
Katrina Updike  
Jillian Urban  
Karen Usher  
Harvey & Ellen Ussery  
Thomas & Lisa Valentin  
Ken Van Bremen  
Abigail Van de Wall  
Alan & Carolyn  
Van Der Veen  
Elizabeth Van Deventer  
Lisa Van Horn  
Martin Van Roekel  
Joshua Van Voorst  
James & Amber Vandehey  
Yvette Rene Vandiver  
Patti VanGorden  
Sharon VanGundy  
Justin VanHoozer  
Jennifer VanHorne  
Robert VanKirk  
Andrew VanOrd  
Leanne VanOverbeke  
Charlie A. Vaughn  
Mary Vavrina  
Sara Velazquez  
Heather Venator  
Katrin Venema  
Robin Verson  
Elexis Vesely  
Paula J. Vester  
Vera Videnovich  
Grace Vidoni  
Jimmie D. Vidrine  
Hannah Viergutz  
Ronald Vigil  
Robert E. Vincent  
Tamara Visser  
Nancy Viviani  
Donna Vivier  
Tammy Voegel  
Travis & Ashli Voelker  
Jennifer Vogel





*"We have been breeding Meishans for almost 5 years. This is the most amazing breed. We couldn't be happier with them and it gets better every year." ~ Wendy Palmer of Imperial Farm in Georgia*

*University of Illinois Pink Lady, a Critically-endangered foundation sow in the American Meishan Breeders Association, living her best life at Meishan Preservation at Jensen Reserve. Photo courtesy of Laura Jensen.*



## \$25 - \$99 CONTINUED

Alla Voloshchuk  
Amon Von Alst  
Lisa A. Vonder Haar  
Cathy Vosseteig  
Sarah Vu  
Sandra Frizell Wade  
Wesley Wade  
Richard Wagener  
Rick Wagner  
Norman L. &  
Sue Wagoner  
Molly Waisman  
Stewart Waite  
Michelle Walbridge  
Katherine Walcott  
April Waldner  
Jane Waldron  
Carolyn Walker  
Charis Walker  
Dean & Jamie Walker  
Katie Walker  
Ray & Mary Walker  
Ryan J. & Katie N. Walker  
Alexis Wallace  
Diana Wallace  
Donna Walton-Gibbs  
Robert & Linna Walz  
Brandon Ward  
Leslie Warner  
Mary & Steve Warner  
Karyn Warnert  
Gina Warren  
Heather D. Warren  
Lynne Warren  
Stephanie Warren  
Washington Crossing  
Park  
Ron Wasson  
Jane L. Waterman  
Mindy Waters  
Jennie Watkins  
Kim Watson  
Linwood Worth Watson  
Linda Wattonville  
Jo A. Weatherwax  
Melissa Weaver Dunning  
James I. Weaver

Joi Weaver  
Kitty Weaver  
Jennifer Webb  
Kristy Webb  
Vanessa Weese  
Gail Wege  
Mary Ann Wegelin  
Christina Weger  
Meagan E. Weidner  
Diana Weinhardt  
Treangen  
Lindsey Welch  
Michelle Welch  
Dawn Welfare  
Anica Wells  
Jay P. Wells  
Mark Wendell  
Julie Wendt & Paul Vass  
Elaine West  
Zachary Westhoff  
Gary J. Wetherill  
Kaitlyn Whalen  
Calvin Wheeler  
Kristin R. Whetstone  
Kimberly Whidden  
Gordon Whitaker  
Kyle & Alissa Whitcomb  
Duane White  
Jacque White  
Jessica White  
Laura White  
Robert White  
Washington W. White  
Jonathan Whitefield  
Janice Whitfield  
Kathryn Whitlock  
Jennifer R Whitmore  
Faye A. Whitney  
Greg L. Whitt  
Jackie Whitzer  
Debbie Wickum  
Marie Wiggins  
Jordan Wilborn  
Glenna Wilder  
Jeff Wilkins  
Julia A. Wilkins  
Mitchell R. Wilkinson  
Mark Willems

Sandra Willford  
Becky J. Willhite  
Anne Williams  
Barbara Williams  
Charlotte Williams  
Jennifer Williams  
Joshua Williams  
Laura Williams  
Lisa Williams  
Lorne Williams  
Pamela Williams  
Richard Allen Williams  
Tracie Williams  
Tara Williamson  
Tanya Willis  
Ben Wilson  
Donald & Christine Wilson  
Holly Wilson  
Jessica Wilson  
Kimberly Wilson  
Maggie Wilson  
Susan Wilson  
Victoria Wilson &  
Holli Alexander  
Joe & Alyssa Wiltjer  
David & Kathryn Wilton  
Joretta Windham  
Windy Creek Farm  
Jacquay Winfield  
Gary Wingert  
Heath Bradford Wingfield  
Scott Winnette  
Dalton Winter  
Sarah Winterstrom  
Patricia-Anne WinterSun  
Stephanie Wisdom  
Alexandra Wisniewski  
Thomas Witham  
Marcy H. Witherington  
Scott Withers  
Brent &  
Sarah Wittenbraker  
Jenna Woginrich  
Helina Woldekiros  
Barry Wolf  
Maggy Wolf  
Tobi Wolf  
Cynthia M. Wolfe

Robin Wolfe  
Janet L. Wolff  
Claudia Diana Wolfram  
Lisa Michelle Wonderly  
Bradley Wood  
Harris G. Wood  
Janet Wood  
Jennifer Wood  
Steve Wood  
Judith Woodruff  
Sonny Woods  
Terri Woods  
Pam Woodson  
Terri A. Woodward  
Finley Woolston  
Erica Worhatch  
Anne Worthington  
Amanda Wright  
Brenda & Bruce Wright  
Meare Wright  
Ralph M. Wright  
Rebekah Wright  
Seth Wright  
Suzanne Wright  
Travis S. Wright  
Alan A. Wrigley  
WSBK Farm  
Cheryl Wurtenberger  
Kristine Wyncott  
J. Hope Yarbrough  
Ricky Yarnell  
Sandra K. Yates  
Lacie Yeckel  
Robin Yerton  
Wendy Ying  
Allison Yoa  
Emanuel Yoder  
Maria Yohn  
Jennifer Yoneji  
Judith Yongue  
Jacqueline York  
Madeline Yoste  
Andrea Young  
Karen E. Young  
Leslie Young  
Pat Young  
Paul Young  
Michael D. Zahs  
Kathy J. Zehr  
Marianne E. Zeigler  
Christian &  
Jennifer Zenker  
Nadine Zielinski  
Bryant & Catherine Zilke  
Matt & Andy Zinnel  
Linda S. Zintz  
John C. Zivzes  
Tiffany Zorica  
Jacob Zyskowski



*Dr. Darlene Lee provides laying hens to families on the Hopi and Navajo reservations beginning their journey toward self-reliability. "It's been a very satisfying and successful endeavor," she said. "I'm committed to supporting The Livestock Conservancy and all the folks in the trenches, doing the hard work."*

# PARTNERS & BOARD OF DIRECTORS

*THANK YOU to our **Partners**, whose expertise, collaboration, and boots-on-the-ground support saves rare breeds from extinction.*

More than 150 breed clubs,  
associations, and registries

American Horse Council  
American Poultry Association  
American Rabbit  
Breeders Association  
Coastal South Native  
Flock Alliance  
Conner Prairie  
Fibershed  
Food Animal Concerns Trust  
George Washington's  
Mount Vernon  
Grassroots Pedigree  
Software Solutions  
Gulf Coast Sheep  
Breeders Association  
Heritage Livestock Canada  
Heritage Poultry Conservancy  
Leicester Longwool Sheep  
Breeders Association  
Maryland Sheep and Wool  
Nature's Safe  
NC 4-H and Cooperative  
Extension Service  
NY Sheep and Wool Festival

NC Horse Council  
Races Mulassières du Poitou  
Rare Breeds Survival Trust  
Rare Breeds Trust of Australia  
Select Breeder Services  
STgenetics  
Southern Coastal Alliance and  
Gulf Coast Sheep  
Breeders Association  
Stallion AI Services  
Texas A&M University  
Texas Poitou Donkeys  
Trans Ova Genetics  
United Nations Food and  
Agriculture Organization  
University of Pennsylvania  
USDA National Animal  
Germplasm Program  
ViaGen Pets & Equine  
Virginia Tech University



*George Washington's Mount Vernon Livestock Manager Lisa Pregent holds Roger, a Narragansett turkey. Rodger and his three hens are part of a new breeding program for this watch-listed turkey at Mount Vernon. Photo by Jeannette Beranger*

*Committed to The Livestock Conservancy's nonprofit mission, the **Board of Directors** brings a wealth of experience and expertise to the governing body. These volunteers set policies and priorities for the organization. Directors are elected by the membership and serve three-year terms. THANK YOU to our Board of Directors who generously support The Livestock Conservancy with their time, knowledge, and leadership.*

Patricia (Pat) K. Johnston,  
*President*  
Jay (Jerry) Calvert,  
*Vice President*  
Bud Wood,  
*Acting Treasurer*  
Richard Browning,  
*Secretary*  
David Anderson  
Gloria Basse  
Silas Bernardoni  
Richard Blaney

Judy Brummer  
Rebecca Burgess  
Norman Burns  
Keisha Cameron  
Adam Dixon  
Cindy Dvergsten  
Samantha Garwin  
Nancy Irlbeck  
Neil O'Sullivan  
Marie Minnich  
Sandra Nordmark  
Tim Safranski



# VOLUNTEERS

*THANK YOU to our volunteers who generously give their time to The Livestock Conservancy. Your expertise and passion for rare farm animals continues to inspire members and the general public across the United States.*

Connie Abeln  
Debbie Adams  
Josh Adams  
Jon Alden  
Sarah Anderson  
Zefron Anderson  
Patrick Archer  
Judy Barnet  
Diane Barrows  
Nikyle Begay  
Marjie Bender  
Don Bixby  
Sarah Blacklin  
Beverly Blaylock  
Kathy Bottorff  
Rachel Breeden  
Diane Broek  
Samantha Brooks  
Vernon Brown  
Judy Brummer  
Esther Buonanno

Sue Burger  
Jill Burkes  
Dana Burtness  
Audrey & Mike Cadle  
Keisha Cameron  
Cynthia Capers  
Gracie Cardwell  
Kim Carr  
John F. Carroll  
Jeff Chambers  
Carolyn Christman  
Roy Clemes  
Doyle Conner, Jr.  
Courtney Cooper  
Gus Cothran  
Paul Couch  
Ariane Daguin  
Debby Davis  
Helen Decker  
Tilly Donahoe  
Cindy Dvergsten

Cory Edge  
Steve Edwards  
Mary Egbert  
Melinda Ellison  
Marcos Fernandez  
Pat Foreman  
Abby Franquemont  
Dale Freier, III  
Amy Gabbard  
Katie Gage  
Maria Rodríguez Galván  
Samantha Gasson  
Julie Gauthier  
Gabrielle Gordon  
Zane Graham  
Jamie Haback  
Kate Hagel  
Lexie Hain  
John Hall  
Bob Hawes  
Stephanie Hayes

Loretta Heath  
Jane Henningson  
Paul Henningson  
Libby Henson  
Peter Herold  
Emily Chamelin Hickman  
Katrin Hinrichs  
Lori Holder-Webb  
Sarah Butcher Howell  
Will Hueston  
Laura Huey  
Cara Itle  
Jon Jackson  
Paige Jackson  
Kimberly Jepsen  
Laura Jensen  
Christopher Jones  
Julie Jones  
David Kendall  
Jennifer Kendall  
Monica Kennedy  
Martha Hoffman  
Kerestes  
Alison Kerr  
Melissa R. Kreuzer  
Claus Kropp  
Susan Kurtz  
Erin Link  
Becky Mahoney  
Patrick Martins  
Larry Masters  
Kevin Matthews  
Bob May  
Tracy McCoy  
Amy McKamey  
John Metzner



*Mike Cadle educates kids attending the USPS Heritage Breed Stamp First Day of Issue Ceremony at George Washington's Mount Vernon about American Mammoth Jackstock donkeys. Hoss is a gelding standing 15 hands tall. Mike and his wife Audrey care for many Mammoth Jacks on their farm Donkey Meadows in Purcellville, Virginia. Photo by Brittany Sweeney.*

Jesse Meyer  
 Ellie Mocker  
 Stephen Monroe  
 Lucy Morgan  
 Audrey Morris  
 Tom Mozena  
 Ken Murray  
 Kathy O'Reilly  
 Brian Larson  
 Matt LeRoux  
 Helga Loncosky  
 Mary Jeanne Packer  
 Andrew Perkins  
 Ashley Pierce  
 Justin Pitts  
 Mark Podgwaite  
 Lisa Pregent  
 Meg Puckett  
 Gina Purdue  
 Kimberly Radcliffe  
 Callene & Eric Rapp  
 Joshua T. Ream  
 Frank Reese  
 Christy Reich  
 Heidi Reinhardt  
 Cesar Alejandro Romero  
 Michael Ruhlman  
 Blake Russell  
 Jason Rutledge  
 Ellen Sakornbut  
 Aharon Sasson  
 Joe Schallberger  
 Beverly Schieman  
 Susan Schoenian  
 Hank Shaw  
 Elaine Shirley  
 Susan Sigmon  
 Angelia Silvera  
 Teresa Smart  
 Caleb Smith  
 P. Allen Smith  
 Lucy Stevenson  
 Eric Stewart  
 Mac Stone  
 Ian Thompson  
 Jonathan Thompson  
 Susan Vanderford  
 Andrea Van der Wel  
 Rose & Eugene Vigil  
 Tom Watkins  
 Chad Wegener  
 AJ Wells  
 Faye Whitney  
 Seth Wright  
 Keith Youngblood

**Special Thank you to all of our  
 Microgrant Judges!**

## VOLUNTEER SPOTLIGHT - THERESE COUCHER

Many members of The Livestock Conservancy enjoy sharing their passion for animals, especially heritage breeds, with others. For Therese Coucher, animals were always part of her life growing up in the western U.S. Her early fauna-related experiences led to a lifelong love of nature, and inspired a dedication to protecting the natural environment and all the creatures found within.



For many years, Therese bred Komondor dogs and maintained their registry. She also raised Angora rabbits, and kept and showed Morgan horses. Now, she keeps chickens to provide fresh eggs, and lives with two Berger Picards, an ancient breed of sheepdog. Therese is also a tapestry weaver, woodworker, artist, Master Gardener, and Master Naturalist. Like many weavers, she enjoys working with a variety of natural fibers, both animal and plant, selected for their different textures and the appearance of the final project.

Between 2017 and 2021, Therese conducted the annual livestock census for The Livestock Conservancy as a volunteer. She reached out to more than 100 livestock breed associations and registries each year to gather data used to determine changes to the Conservation Priority List. She filled in gaps in the census and compiled information about populations in other countries. During her time as a census volunteer, Therese provided the numbers to graduate both Highland and Ayrshire cattle from the Conservation Priority List.

Therese joined The Livestock Conservancy (then called the American Minor Breeds Conservancy) as a member in the late 1980s, and her husband, Rick Wilson, became a member in 2000. As donors, they have supported a photo contest to make rare breeds more visible, and modernized outreach opportunities through redesigns of the *Newsletter*, *Breeders Directory*, brochures, and event display, in addition to general support for conservation.

***“I’ve always felt a deep connection to creatures of all kinds, but especially livestock, the animals whose histories are so closely entwined with ours,” Therese said. “They have helped feed and clothe us, provided companionship, literal horsepower, and innumerable other services. Without them our human world would have evolved into something unimaginably different. We owe these animals a huge debt and must do everything we can to see that their futures are assured.”***

Therese and Rick set an example of the many ways that volunteers can support conservation. Thank you!

*We are so incredibly grateful to Therese and all of our volunteers who share their time, knowledge, and skills to help save rare breeds.*



# BY THE NUMBERS | SPONSORS | STAFF

## 2022 MEMBERSHIP BREAKDOWN



**3,529 Members**



**All 50 States Represented,**  
plus Puerto Rico and District of Columbia



**State with the most members:**  
Virginia, 230 members



**11 Countries Represented**  
Australia, Canada, Germany, Hungary, Italy,  
Japan, Netherlands, Philipines, Poland,  
Switzerland, and the United Kingdom

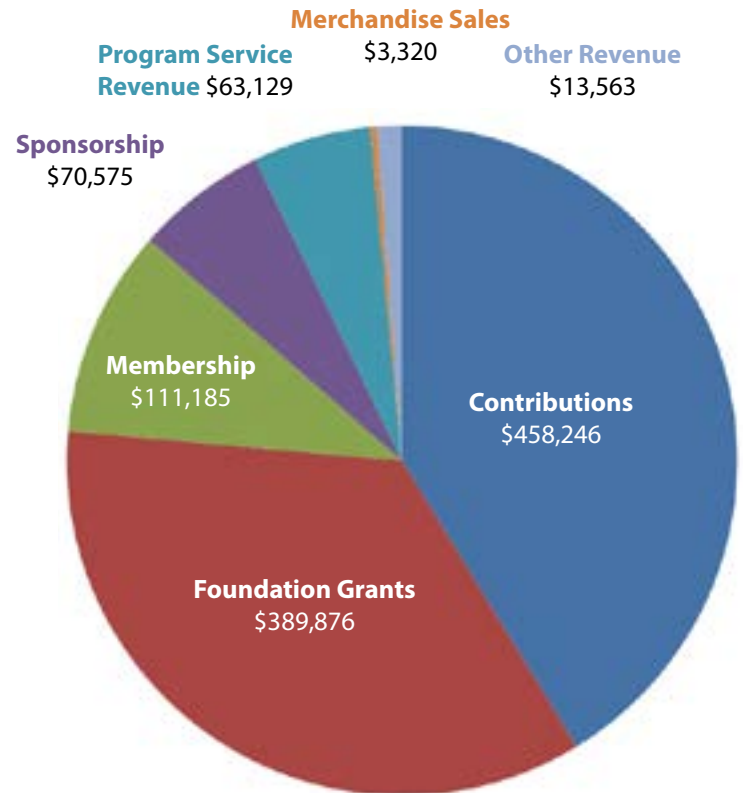


**125 Conservation Champions** (monthly donors)

*This financial report reflects The Livestock Conservancy's unaudited fiscal year 2022*

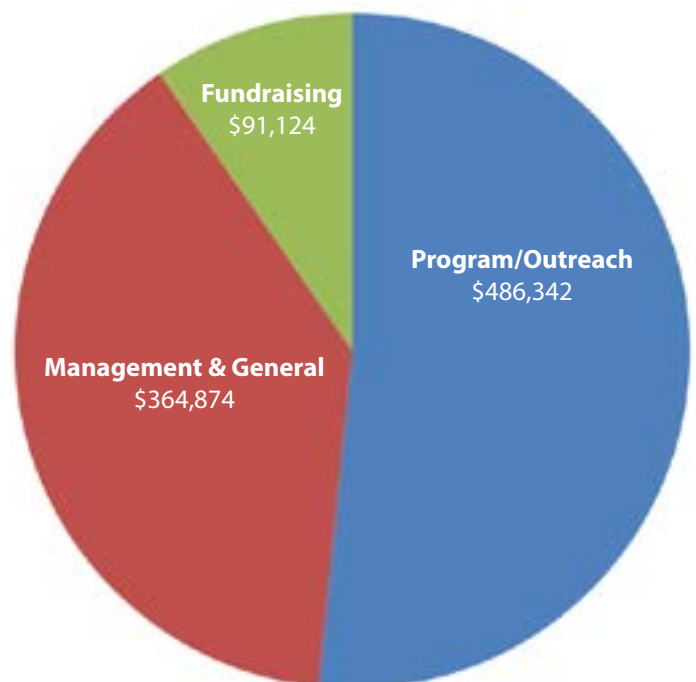
## SUPPORT & REVENUE

Total Income: \$1,109,894



## EXPENDITURES

Total Expenses: \$942,341





*THANK YOU to our Sponsors, who generously support efforts to keep endangered breeds of livestock and poultry from extinction.*



**PLATINUM**



**PLATINUM**



**GOLD**

**SILVER**

Murray McMurray Hatchery

**BRONZE**

Marushka Farms  
Premier 1 Supplies  
KW Cages Advanced Design

**PARTNER**

Metzer Farms  
Meyer Hatchery  
Seven Springs Farm Supply

**STEWARD**

Bleak Hill Lincoln Longwools  
National Romeldale-  
CVM Conservancy  
Whispering Hills Farm

**SUPPORTER**

American Guinea  
Hog Association  
Cornerstone Morgan  
Horse Club  
Dotcom-Tools by  
Dotcom-Monitor  
Driven Coffee Roasters  
Fresh Air & Peace Air BNB

Heritage Shorthorn Society  
The Lippitt Club, Inc.  
Loadview by  
Dotcom-Monitor  
Organic Valley  
WebHostingBuddy.com

**SHAVE 'EM TO SAVE 'EM**

Standlee Premium  
Western Forage  
Premier 1  
Marushka Farms  
Farm to Needle Yarn Shop  
Storey Publishing, LLC  
Battenkill Fibers Carding  
and Spinning Mill  
Unicorn Clean  
JG Switzer  
Solitude Wool  
Ply Magazine  
Living Felt  
A Sheep Like Faith  
Richert Ranch  
Baize Shetlands  
Fiber Goods Pals  
Deerly Woven  
Fun with Fiber, PA

**FULL-TIME STAFF MEMBERS:**

Alison Martin, Ph.D., Executive Director  
Jeannette Beranger, Senior Program Manager  
Michele Brane, Donor Information Manager (Retired June 2022)  
Charlene Couch, Ph.D., Senior Program Manager  
Rhyne Cureton, Breed Association Manager (Aug. 2020-July 2021)  
Karen Elliott, M.Ed., Development Director  
Wendy Jennings, Administrative Assistant  
Emily Rose Johnson, Communications Coordinator  
Cindra Kerscher, Program Manager  
Jaye Ray, Program Assistant  
Jeanne Serrette, Development Assistant  
Brittany Sweeney, Communications Manager  
Angelique Thompson, Senior Operations Director

**CONTRACTORS:**

Christine Heinrichs, Jennifer Kendall, Ellie Mocker, Norma Padgett,  
Cathy R. Payne Ed.D., Andrew and Laura Perkins, Teresa Perleberg,  
Margaret Radcliffe, Deborah Robson, Don Schrider, and Debby Wechsler

**TECHNICAL ADVISOR:** D. Phillip Sponenberg, DVM, Ph.D.

(Top) Wendy Jennings feeds a Myotonic goat at a member's farm.  
(Middle) Cindra Kerscher, Rhyne Cureton, Karen Elliott, Alison Martin,  
Jeannette Beranger, Charlene Couch, and Brittany Sweeney attend  
the USPS First Day of Issue Ceremony for Heritage Breed Stamps at  
George Washington's Mount Vernon. (Bottom) Jeanne Serrette holds  
an American Chinchilla rabbit at a member's farm.



### **JOIN A CONSERVATION COMMUNITY**

Become a member to connect with a vibrant network of rare breed stewards ensuring our genetic treasures do not go extinct.

### **SUPPORT CONSERVATION**

Your automatic monthly donation as a Conservation Champion supports genetic research benefiting the future of farming.

### **AMPLIFY CONSERVATION**

Connect with us on social media and subscribe to our monthly email newsletter.



### **THE LIVESTOCK CONSERVANCY**

PO Box 477, Pittsboro, NC 27312  
919-542-5704 | [LivestockConservancy.org](http://LivestockConservancy.org)



*Photo of a boy with his critically-endangered Aylesbury duck, courtesy of Our Haven Huis.*