

The Livestock Conservancy™ Breeder and Products Directory

2017 Ad Rates

**Artwork and Payment Deadline:
December 31, 2016!**

Email Ryan Walker at
rwalker@LivestockConservancy.org or
call 919-542-5704, ext. 102

Ad Creation \$50 / Major Changes \$25

★ **Lone Star Farm**
Barbados Blackbelly Sheep



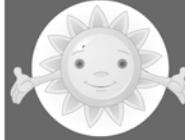
EST. 1996 **Business Card**

Mike & Becky Lannon Hockley, TX 75044
~(936) 372-3332~

3.5" x 2" **\$75**

beckylannon@hughes.net or daddy5@hughes.net
www.lonestarbarbadosblackbelly.com

300+DPI High-Res Artwork Preferred



Arriola Sunshine Farm

Farming In Natures Image
Since 1987

Registered Navajo-Churro Sheep
and Bourbon Red Turkeys
Visit us at www.arriolasunshinefarm.com
E-mail: sunshine@gobrainstorm.net
Phone Cindy or Mike: 970-882-4222



We offer:

- breeding stock
- raw fleeces
- processed wool
- felt products
- grass-fed lamb
- pelts

Join Our Distance Learning Program
We offer training & mentoring in Holistic Management
of human, financial & natural resources. Ideal for farmers
& ranchers who practice sustainable agriculture.
Visit www.newconcepts.com for details

1/4 Page
3.5" x 4.75" \$125






1/2 Page
\$175

✱ The Sedgwick County Zoo is proud to care for the largest collection of heritage breeds in the U.S.

7.25" x 4.75" • Wichita, KS 67212-1698 • T 316.660.WILD (9453) • www.scz.org

← 7.25" x 9.5" ————— **Full Page \$250**